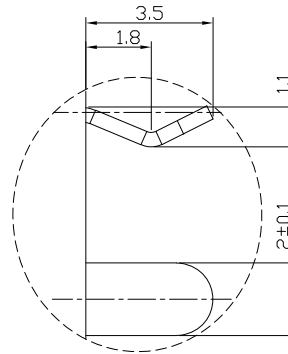
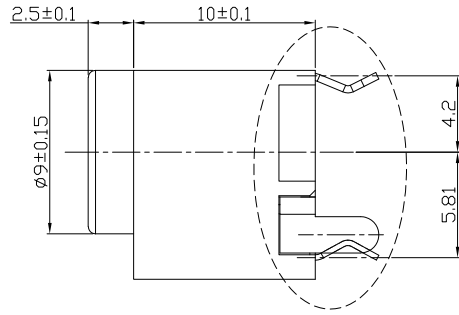
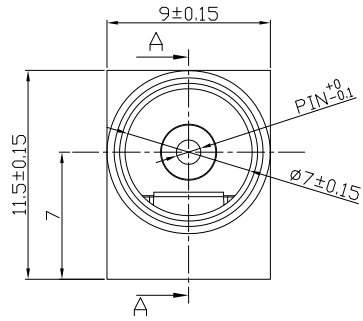




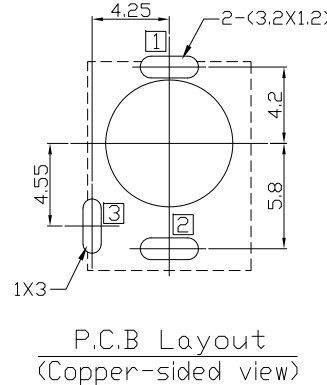
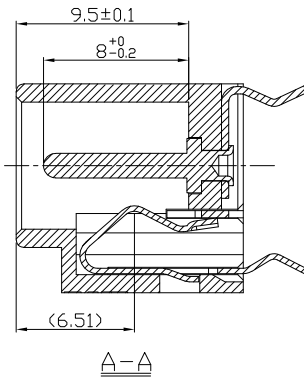
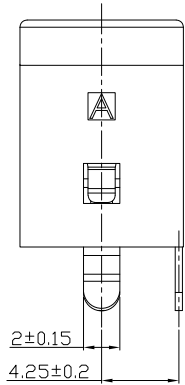
RoHS  
Compliant  
2002/95/EC

REV.	ECN.	NO.	APPD.

DIMENSIONS

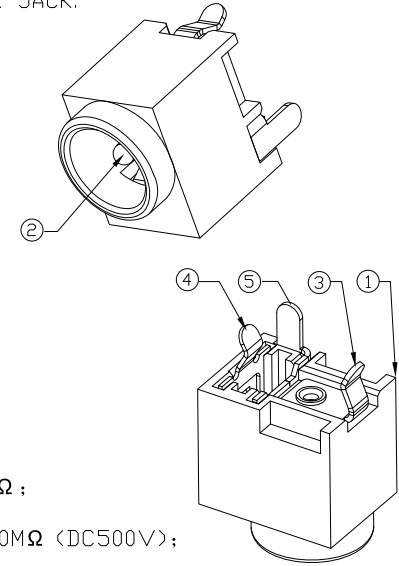


DETAIL A  
2:1



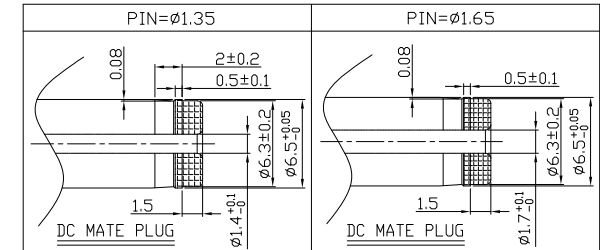
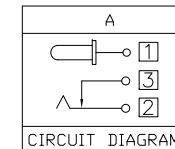
P.C.B Layout  
(Copper-sided view)

- MODEL CODE:  
DCB0-01410- A □ PB BK T 0 3  
(1) (2) (3)(4) (5) (6) (7)(8) (9)
- (1):Series type:DIP DC POWER JACK.
  - (2):Series No.
  - (3):Schematic option: A
  - (4):Center pin diameter:  
E=Ø1.35 G=Ø1.65
  - (5):Material of housing:  
PB=PBT (Standard)
  - (6):Housing color:  
BK=Black (Standard)
  - (7):Terminal plating  
T=Tin(Sn)(Standard)  
S=Silver(Ag)
  - (8):Special option:  
0=No special option
  - (9):Packing mode:  
3=Plastic box packing



SPECIFICATION:

- 1.Rating : DC 20V 3.0A;
- 2.Contact resistance: ≤30mΩ;  
After test:≤50mΩ
- 3.Insulation resistance: ≥100MΩ (DC500V);  
After test:≥50MΩ
- 4.Withstand voltage: 500VAC;
- 5.Insertion and extraction force: 3-30N;
- 6.life test: 5,000 cycles;
- 7.Operaton temperature range:-20°C~70°C;
- 8.Preservative temperature range:-40°C~85°C;



Model No.	E	G
CENTER PIN	Ø1.35	Ø1.65

○: ITEM NO. □: TERMINAL NO.

NO.	PARTS	MATERIAL	Q'TY	FINISHING	TOLERANCE	ANGLES	UNITS mm	雅安科技有限公司 ACCURATE INNOTECH INC.					
⑤	Shunt terminal ③	Brass t=0.4	1	Tin plating	±0.3	±2'	MAT'L	TITLE: DIP DC POWER JACK		PART NO.: DCB0-01410			
④	Tip spring ②	Phosphor bronze t=0.3	1	Tin plating			SEE NOTE	DR: Ricky 2019/05/03		DWG NO.: AB0-01410			
③	Center pin terminal ①	Brass t=0.4	1	Tin plating			FINISH	CHKD: Ricky 2019/05/03					
②	Center pin ①	Copper alloy	1	Nickel plating			SEE NOTE	APPD:		SCALE	SHEET	REV.	CUSTOMER
①	Housing	PBT	1				Q'TY			1:1	1/1	A	DRAWING
								THESE DRAWINGS AND SPECIFICATIONS ARE THE PROPERTY OF ACCURATE INNOTECH INC AND SHALL NOT BE REPRODUCED, COPIED OR USED IN ANY MANNER WITHOUT THE PRIOR WRITTEN CONSENT OF ACCURATE INNOTECH INC.					