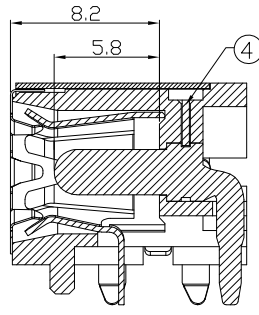
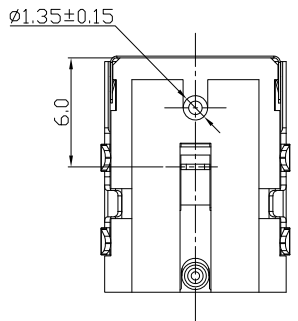
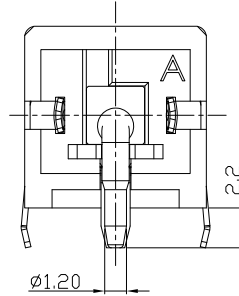
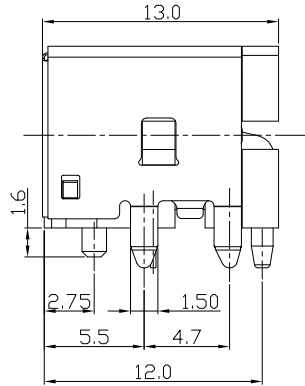
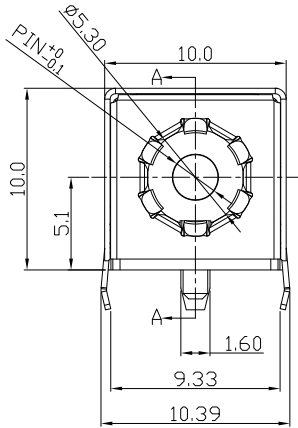




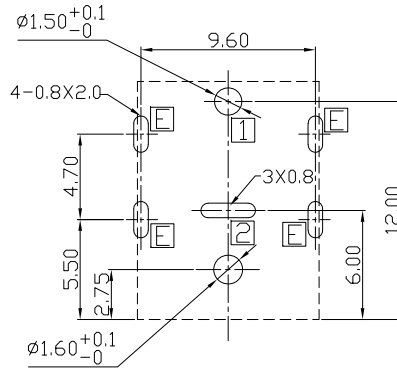
RoHS
Compliant
2002/95/EC

Halogen Free

DIMENSIONS



SECTION A-A
(Short Center pin end is Circle)

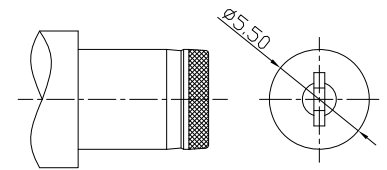
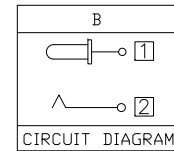


RECOMMENDED P.C.B. LAYOUT
UNSPECIFIED TOLERANCE: ±0.05
(TOP VIEW)

- MODEL CODE:
DCB0-0146F- B □ 10 BK S 0 1
(1) (2) (3)(4) (5) (6) (7)(8) (9)
- (1):Series type:DIP DC POWER JACK.
 - (2):Series No.
 - (3):Schematic option: B
 - (4):Center pin diameter:
G=φ1.65 , H=φ2.0 , J=φ2.5
 - (5):Material of housing:
10=PA10T(Standard)
 - (6):Housing color:
BK=Black , 3C=Orange(157C)
 - (7):Terminal plating
T=Tin(Sn) , S=Silver(Ag)
 - (8):Special option:
0=No Special Option
G=Center pin is Gold(Au) plating
 - (9):Packing mode:
1=Reel packing
3=Plastic box packing
4=Bag packing

SPECIFICATION:

- 1.Rating : DC 20V 8A;
- 2.Contact resistance: ≤30mΩ;
After test:≤50mΩ
- 3.Insulation resistance: ≥100MΩ (DC500V);
After test:≥50MΩ
- 4.Withstand voltage: 500VAC;
- 5.Insertion and extraction force: 3-30N;
- 6.life test: 5,000 cycles;
- 7.Operation temperature range:-20°C~70°C;
- 8.Preservative temperature range:-40°C~85°C;



DC MATE PLUG

Model No.	G	H	J
CENTER PIN	φ1.65	φ2.0	φ2.5

○: ITEM NO. □: TERMINAL NO.

NO.	PARTS	MATERIAL	Q'TY	FINISHING
⑥	Ground Terminal [E]	Copper Alloy	1	Ni plating
⑤	Shield plate	Stainless steel	1	
④	Terminal	Copper Alloy	1	
③	Tip spring [2]	Copper Alloy	1	See "Ordering info"
②	Center pin [1]	Zn Alloy	1	See "Ordering info"
①	Housing	High temp.Thermoplastic	1	Halogen Free, Black

THESE DRAWINGS AND SPECIFICATIONS ARE THE PROPERTY OF ACCURATE INNOTECH INC AND SHALL NOT BE REPRODUCED, COPIED OR USED IN ANY MANNER WITHOUT THE PRIOR WRITTEN CONSENT OF ACCURATE INNOTECH INC.

UNITS	mm	雅安科技有限公司 ACCURATE INNOTECH INC.			
MAT'L	SEE NOTE				
FINISH	SEE NOTE	TITLE: DIP DC POWER JACK	PART NO.: DCB0-0146F		
Q'TY	APPD:	DR: <i>Ricky</i> 2019/05/06	DWG NO.: AB0-0146F		
		CHKD: <i>Ricky</i> 2019/05/06	SCALE	SHEET	REV.
			1:1	1/1	A
			CUSTOMER DRAWING		

REV.	ECN.	NO.	APPD.