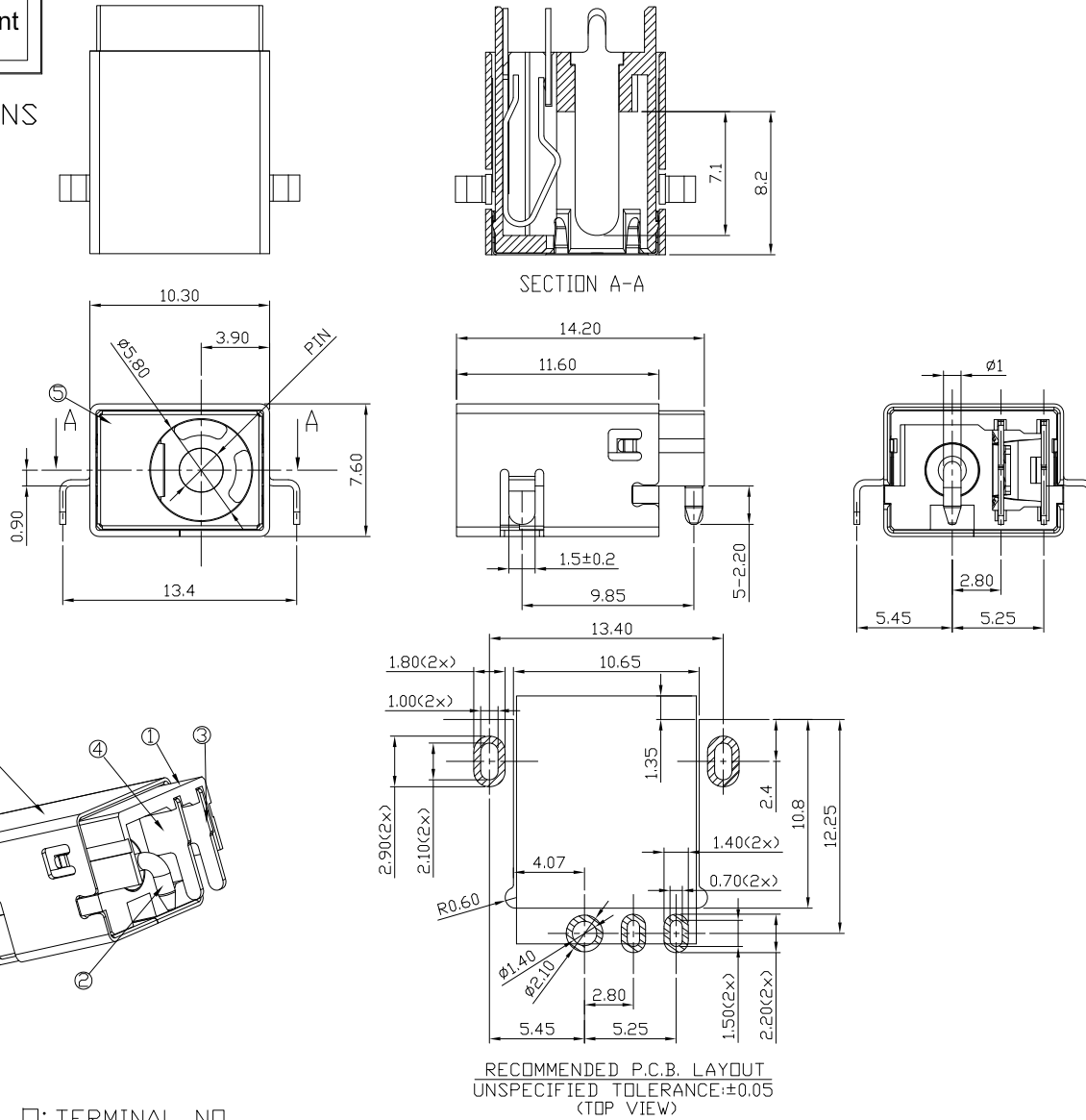




RoHS Compliant
2002/95/EC

REV.	ECN. NO.	APPD.

DIMENSIONS



MODEL CODE:

DCB0-01680- A □ LC BK A 1 1

(1) (2) (3)(4) (5) (6)(7)(8) (9)

(1):Series type:SMD DC POWER JACK.

(2):Series No.

(3):Schematic option: A

(4):Center pin diameter:

H=∅2.0, J=∅2.5

(5):Material of housing:

LC=LCP(Standard)

(6):Housing color:

BK=Black

(7):Terminal plating:

S=Silver(Ag 8u")

A=Silver(Ag 20u")

(8):Special option:

0=Center Pin with Nickel plating

1=Center Pin with Gold plating

(9):Packing mode:

1=Reel packing

Specification:

1.Rating : DC 20V 7A.

2.Contact resistance: ≤30mΩ

After test:≤50mΩ

3.Insulation resistance: ≥100MΩ (500VDC).

After test:≥50MΩ

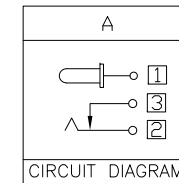
4.Withstanding voltage: 500VAC.

5.Insertion and extraction force: 3N~30N.

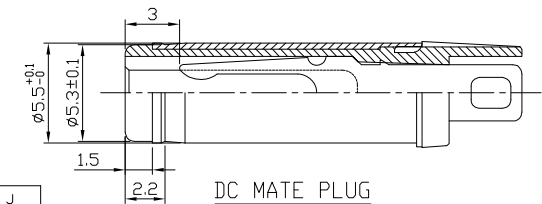
6.Life test: 5000 cycles min.

7. Operation temperature range:-20℃~70℃

8.Preservative temperature range:-40℃~85℃



Model No.	H	J
CENTER PIN	∅2.0	∅2.5



○: ITEM NO. □: TERMINAL NO.

NO.	PARTS	MATERIAL	Q'TY	FINISHING	TOLERANCE	ANGLES	UNITS	雅安科技有限公司 ACCURATE INNOTECH INC.			
⑥	SHELL	Copper alloy	1	Nickel plating	±0.3	±2°	mm	TITLE: SMD DC POWER JACK PART NO.: DCB0-01680			
⑤	Grounding	Stainless Steel	1				MAT'L				
④	Shunt terminal ③	Copper alloy	1	Silver plating			SEE NOTE	DR: Ricky 2018/06/27			
③	Tip spring ②	Copper alloy	1	Silver plating			SEE NOTE	DWG NO.: AB0-01680			
②	pin ①	Copper alloy	1	Nickel plating/Gold plating	THESE DRAWINGS AND SPECIFICATIONS ARE THE PROPERTY OF ACCURATE INNOTECH INC AND SHALL NOT BE REPRODUCED, COPIED OR USED IN ANY MANNER WITHOUT THE PRIOR WRITTEN CONSENT OF ACCURATE INNOTECH INC.			CHKD: Ricky 2018/06/27			
①	Housing	High-temp Thermoplastic	1	Black halogen free				APPD:			
							Q'TY	SCALE	SHEET	REV.	CUSTOMER
								1:1	1/1	A	DRAWING