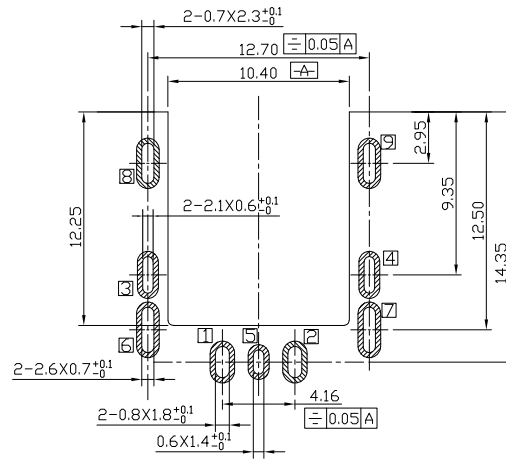
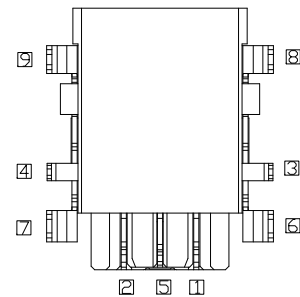
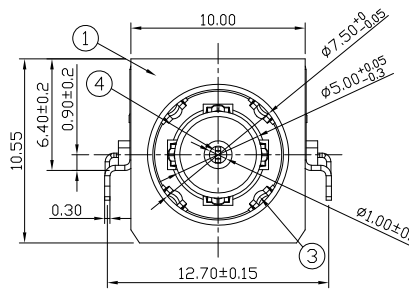
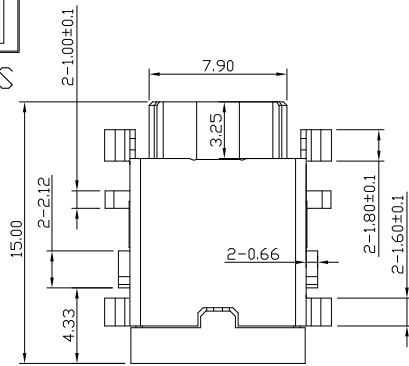




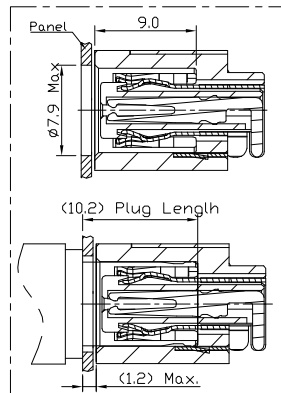
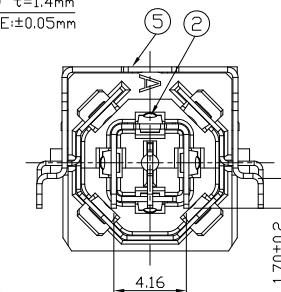
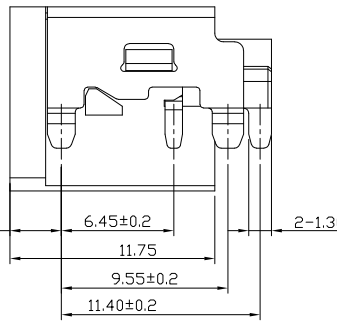
RoHS Compliant
2002/95/EC

Halogen Free

DIMENSIONS



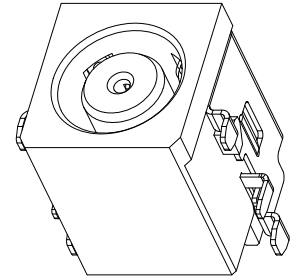
PCB HOLES(TOP VIEW) t=1.4mm
NOTE:GENERAL TOLERANCE:±0.05mm



MODEL CODE:

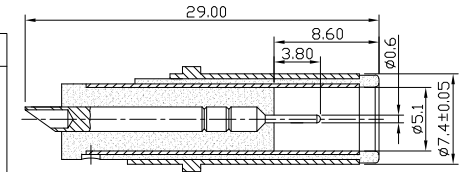
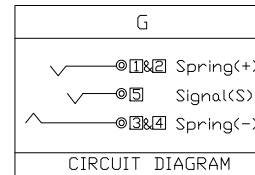
DCB0-02090 - G M 10 BK G 0 1

- (1) (2) (3)(4) (5)(6) (7)(8) (9)
- (1):Series type:SMD DC POWER JACK.
- (2):Series No.
- (3):Schematic option: G
- (4):Center pin diameter: M=Ø0.6
- (5):Material of housing: 10=PA10T
- (6):Housing color: BK=Black (Standard)
- (7):Terminal plating: G=Gold(Au 3u")
- (8):Special option: 0=No special option
- (9):Packing mode: 1=Tape&Reel packing



Specification:

- 1.Rating: DC 42V 10A;
- 2.Contact resistance: ≤50mΩ
After test: ≤100mΩ
- 3.Insulation resistance: ≥100MΩ(500VDC);
After test: ≥50MΩ
- 4.Withstand voltage: 500VAC;
- 5.Insertion and extraction force: 3.5N~30N;
- 6.life test: 5000cycles min;
- 7.Operation temperature range: -20℃~70℃;
- 8.Preservation temperature range: -40℃~85℃;



DC MATE PLUG:OD Ø7.4, ID Ø0.6
TOLERANCE:±0.05mm

○: ITEM NO. □: TERMINAL NO.

NO.	PARTS	MATERIAL	Q'TY	FINISHING	TOLERANCE		ANGLES		UNITS	雅安科技有限公司 ACCURATE INNOTECH INC.				
					X.	±0.50	X°	±2°	mm					
5	Shielding	SUS 304 t=0.30	1	Ni plating	.X	±0.25	.X°	±1°	MAT'L	SEE NOTE	TITLE:	SMD DC POWER JACK		
4	Signal 5	C5210R-EH t=0.30	1	Contact Area Au 3u" Min	.XX	±0.15			FINISH	SEE NOTE	DR:	Ricky 2023/10/23		
3	Spring(-) 3&4	C5210R-EH t=0.25	1	Solder Tail Area Sn 120u"	.XXX	±0.10			Q'TY	CHKD:	Ricky 2023/10/23			
2	Spring(+) 1&2	C5210R-EH t=0.30	1	All over Ni 50u" Min	THESE DRAWINGS AND SPECIFICATIONS ARE THE PROPERTY OF ACCURATE INNOTECH INC AND SHALL NOT BE REPRODUCED, COPIED OR USED IN ANY MANNER WITHOUT THE PRIOR WRITTEN CONSENT OF ACCURATE INNOTECH INC.					APPD:	Ricky 2023/10/23			
1	Housing	PA10T(R630NH),UL94 V-0	1	Black						SCALE	SHEET	REV.	CUSTOMER	
										1:1	1/1	A	DRAWING	