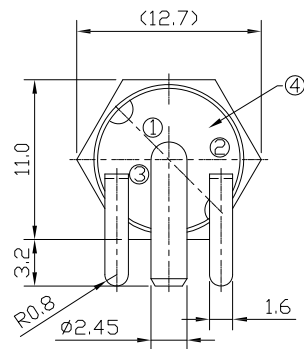
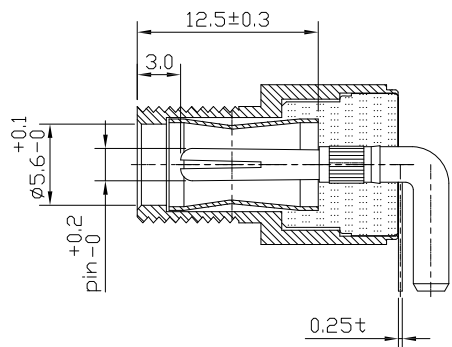




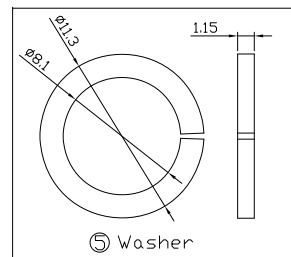
RoHS
Compliant
2002/95/EC

REV.	ECN. NO.	APPD.

DIMENSIONS



REAR VIEW

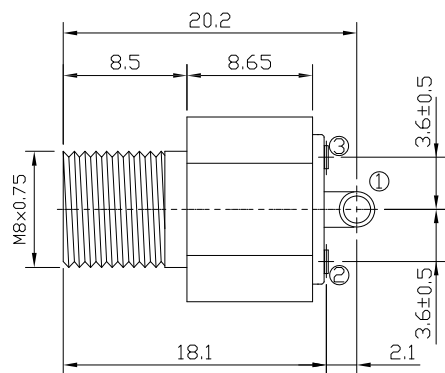


MODEL CODE:

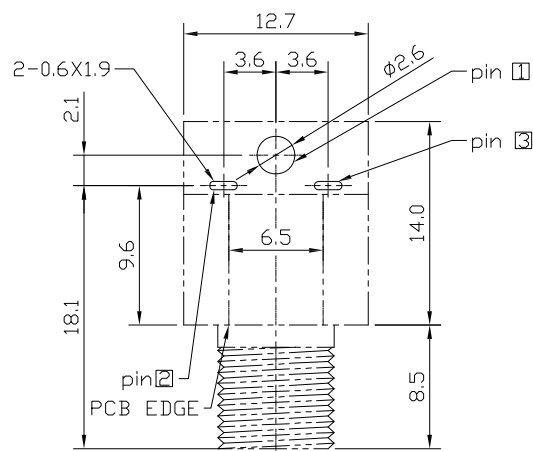
DCB0-02120- B □ 66 BK S 0 3
 (1) (2) (3)(4)(5) (6)(7)(8) (9)
 (1):Series type:DIP DC POWER JACK.
 (2):Series No.
 (3):Schematic option: B
 (4):Center pin diameter:
 H=φ2.0, J=φ2.5
 (5):Material of housing:
 66=PA66
 (6):Housing color:
 BK=Black
 (7):Terminal plating:
 S=Silver(Ag)
 (8):Special option:
 0=No special option
 (9):Packing mode:
 3=Tray packing

Specification:

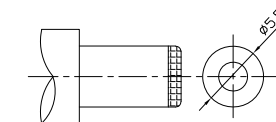
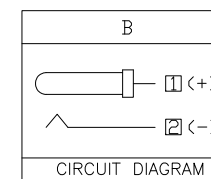
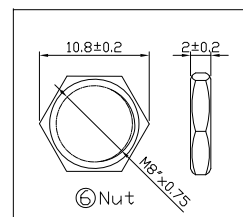
- Rating: DC 20V 6A;
- Contact resistance: ≤30mΩ; After test: ≤100mΩ
- Insulation resistance: ≥100MΩ (500VDC);
After test: ≥50MΩ
- Withstand voltage: 500VAC;
- Insertion and extraction force: 3N~30N;
- life test: 5000cycles;
- Operation temperature range: -20℃~70℃
- Preservative temperature range: -40℃~85℃



BOTTOM VIEW



PCB LAYOUT
TOP VIEW



DC MATE PLUG

Model No.	H	J
CENTER PIN	φ2.0	φ2.5

○: ITEM NO. □: TERMINAL NO.

NO.	PARTS	MATERIAL	Q'TY	FINISHING	TOLERANCE	ANGLES	UNITS
⑥	NUT	H59(COPPER ALLOY)	1	Cu/Sn PLATED			mm
⑤	WASHER	H59(COPPER ALLOY)	1	Cu/Sn PLATED	.X ±0.30	X.* ±3°	MAT'L
④	DIELECTRIC	PA66	1	Cu/Sn PLATED	.XX ±0.15	.X.* ±2°	SEE NOTE
③	TERMINAL ③	C5191	1	Ag PLATED	.XXX ±0.10	.XX.* ±1°	FINISH
②	SLEEVE ②	H59(COPPER ALLOY)	1	Cu/Sn PLATED	THESE DRAWINGS AND SPECIFICATIONS ARE THE PROPERTY OF ACCURATE INNOTECH INC AND SHALL NOT BE REPRODUCED, COPIED OR USED IN ANY MANNER WITHOUT THE PRIOR WRITTEN CONSENT OF ACCURATE INNOTECH INC.		
①	PIN ①	H59(COPPER ALLOY)	1	Ag PLATED			

雅安科技有限公司 ACCURATE INNOTECH INC.			
TITLE: DIP DC POWER JACK		PART NO.: DCB0-02120	
DR: Ricky 2023/10/25		DWG NO.: AB0-02120	
CHKD: Ricky 2023/10/25		SCALE	SHEET
APPD:		1:1	1/1
		REV.	CUSTOMER DRAWING
		A	