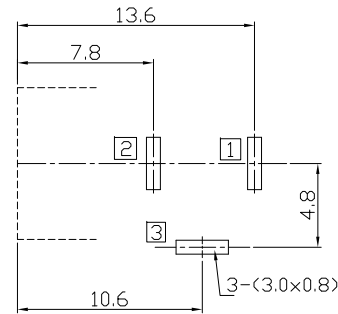
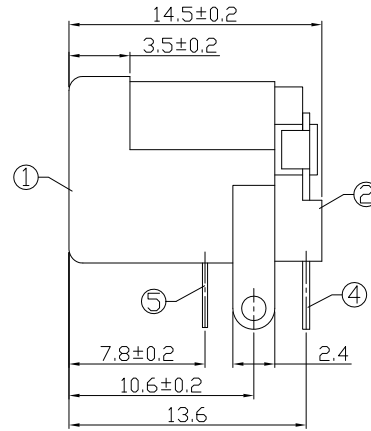
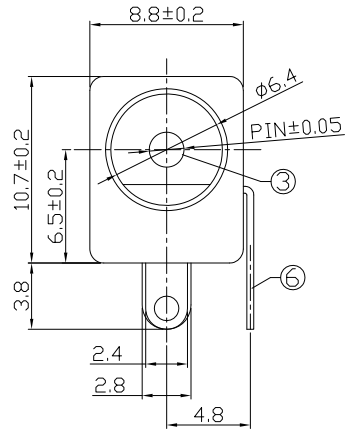




RoHS
Compliant
2002/95/EC

REV.	ECN. NO.	APPD.

DIMENSIONS



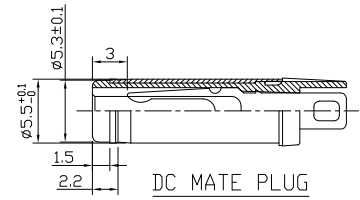
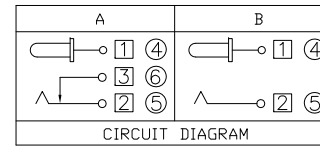
P.C.B Layout
(Top view)

MODEL CODE:

DCB0-50050- A □ PB BK T 0 4
 (1) (2) (3)<4> (5) (6) (7)<8> (9)
 (1):Series type:DIP DC POWER JACK.
 (2):Series No.
 (3):Schematic option: A , B
 (4):Center pin diameter:
 H=φ2.0 , I=φ2.35 , J=φ2.5
 (5):Material of housing:
 PB=PBT (Standard)
 (6):Housing color:
 BK=Black
 (7):Terminal plating
 T=Tin(Sn)
 (8):Special option:
 0=No special option
 (9):Packing mode:
 4=Bag packing

SPECIFICATION:

- Rating : DC 16V 2.5A;
- Contact resistance: ≤30mΩ;
- Insulation resistance: ≥100MΩ (DC500V);
- Withstand voltage: 500VAC ;
- Insertion and extraction force: 3-30N;
- life test: 5,000 cycles;
- Operation temperature range:-20°C~70°C;
- Preservative temperature range:-40°C~85°C;



Model No.	H	I	J
CENTER PIN	φ2.0	φ2.35	φ2.5

○: ITEM NO. □: TERMINAL NO.

⑥	Shunt terminal ③	Brass T=0.40mm	1	Tin-Plating	TOLERANCE	ANGLES	UNITS mm
⑤	Tip spring ②	Bronze T=0.30mm	1	Tin-Plating	±0.3	±2°	MAT'L
④	Center pin terminal ①	Brass T=0.40mm	1	Tin-Plating			SEE NOTE
③	Center pin ①	Brass	1	Ni-Plating			FINISH
②	Cover	PBT	1				SEE NOTE
①	Housing	PBT	1				Q'TY
NO.	PARTS	MATERIAL	Q'TY	FINISHING	THESE DRAWINGS AND SPECIFICATIONS ARE THE PROPERTY OF ACCURATE INNOTECH INC AND SHALL NOT BE REPRODUCED, COPIED OR USED IN ANY MANNER WITHOUT THE PRIOR WRITTEN CONSENT OF ACCURATE INNOTECH INC.		

雅安科技有限公司 ACCURATE INNOTECH INC.			
TITLE: DIP DC POWER JACK		PART NO.: DCB0-50050	
DR: <i>Ricky</i> 2019/05/06		DWG NO.: AB0-50050	
CHKD: <i>Ricky</i> 2019/05/06		SCALE	SHEET
APPD:	1:1	1/1	REV. A
		CUSTOMER DRAWING	