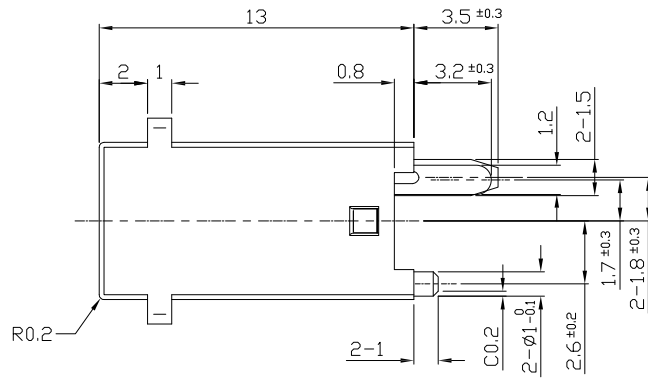
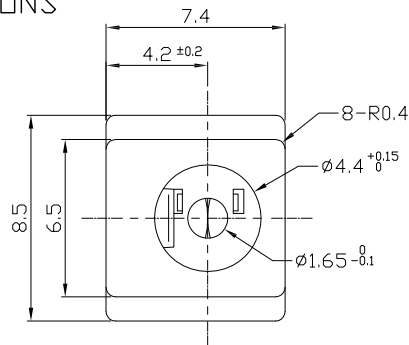




RoHS
Compliant
2002/95/EC

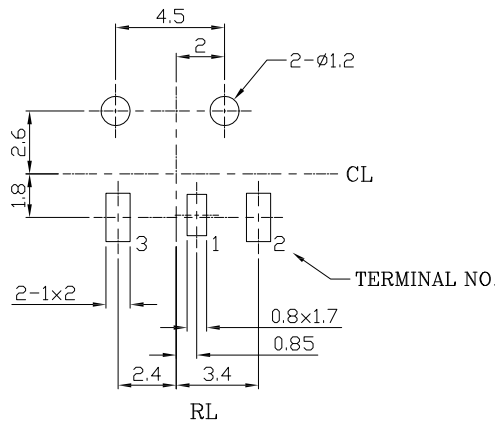
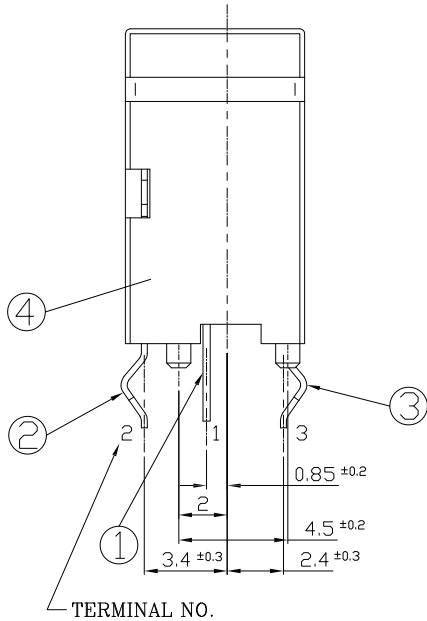
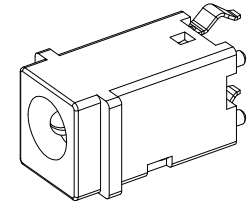
REV.	ECN. NO.	APPD.

DIMENSIONS



MODEL CODE:

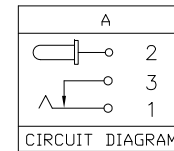
DCD0-52000- A G PB BK S 0 4
 (1) (2) (3)(4) (5) (6) (7)(8) (9)
 (1):Series type:DC POWER JACK.
 (2):Series No.
 (3):Schematic option: A
 (4):Center pin diameter:
 G=Ø1.65mm
 (5):Material of housing:
 PB=PBT
 (6):Housing color:
 BK=Black
 (7):Terminal plating:
 S=Silver(Ag)
 (8):Special option:
 0=No special option
 (9):Packing mode:
 4=Bag packing



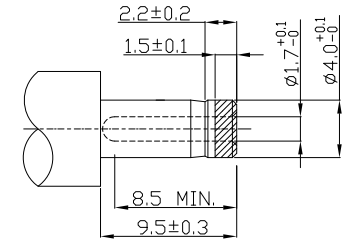
PC BOARD HOLE LAYOUT TOLS : ±0.1
(VIEW FROM DIRECTION OF INSERTION TO PCB)

Specification:

- 1.Rating : DC 6.3V 5A.
- 2.Contact resistance : ≤30mΩ
- 3.Insulation resistance : ≥100MΩ (500V DC).
- 4.Withstanding voltage : 500VAC.
- 5.Insertion and extraction force : 0.3~3Kgs.
- 6.Life test : 5,000 cycles min.
- 7.Operation temperature range:-25°C~70°C



Model No.	G
CENTER PIN	Ø1.65mm



DC MATE PLUG

Bill of materials:

NO.	PARTS	MATERIAL	Q'TY	FINISHING	TOLERANCE	ANGLES	UNITS
④	JACK CASING	PBT/GF RESIN	1	UL94V-0	X≤5=±0.10		mm
③	FIXED TERMINAL	BRASS C2680R-H 0.3t	1	Ag-PLATED	X> 5=±0.30		MAT'L
②	SLEEVE SPRING	PBS C5210R 0.25t	1	Ag-PLATED			SEE NOTE
①	PIN TERMINAL	BRASS C2680R-H 0.3t	1	Ag-PLATED			FINISH
							SEE NOTE
							Q'TY

THESE DRAWINGS AND SPECIFICATIONS ARE THE PROPERTY OF ACCURATE INNOTECH INC AND SHALL NOT BE REPRODUCED, COPIED OR USED IN ANY MANNER WITHOUT THE PRIOR WRITTEN CONSENT OF ACCURATE INNOTECH INC.

雅安科技有限公司 ACCURATE INNOTECH INC.			
TITLE: DC POWER JACK		PART NO.: DCD0-52000	
DR: <i>Ricky</i> 2019/08/27		DWG NO.: AD0-52000	
CHKD: <i>Ricky</i> 2019/08/27		SCALE 1:1	SHEET 1/1
APPD:		REV. A	CUSTOMER DRAWING