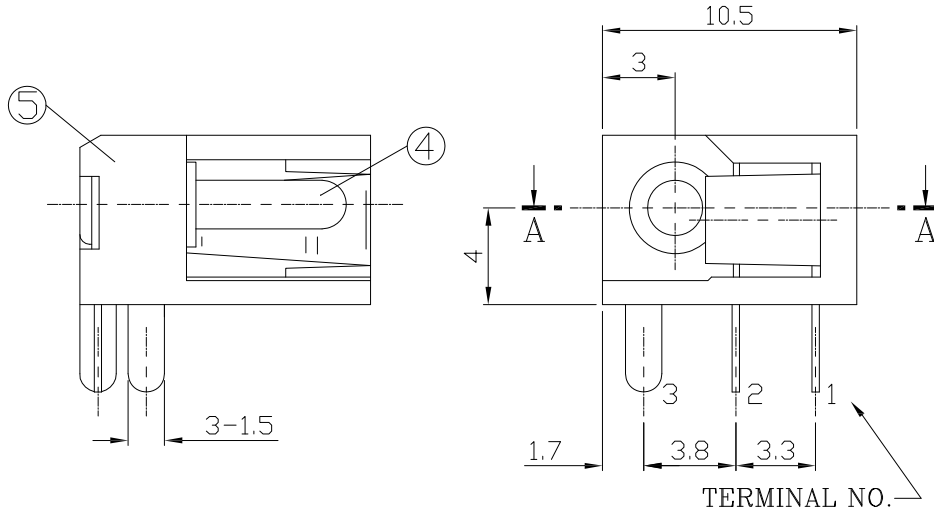




RoHS  
Compliant  
2002/95/EC

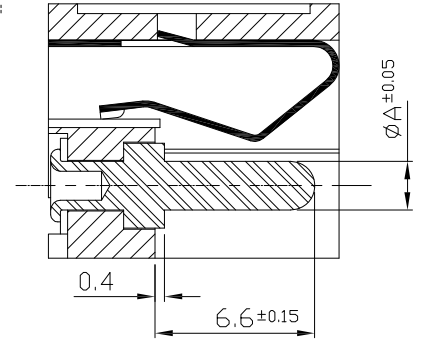
REV.	ECN. NO.	APPD.

DIMENSIONS



MODEL CODE:

DCD0-87000- A □ PB BK S 0 4  
 (1) (2) (3)(4) (5) (6) (7)(8) (9)  
 (1):Series type:DC POWER JACK.  
 (2):Series No.  
 (3):Schematic option: A  
 (4):Center pin diameter:  
 H=∅2.0mm, J=∅2.5mm  
 (5):Material of housing:  
 PB=PBT  
 (6):Housing color:  
 BK=Black  
 (7):Terminal plating:  
 S=Silver(Ag)  
 (8):Special option:  
 0=No special option  
 (9):Packing mode:  
 4=Bag packing

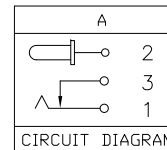
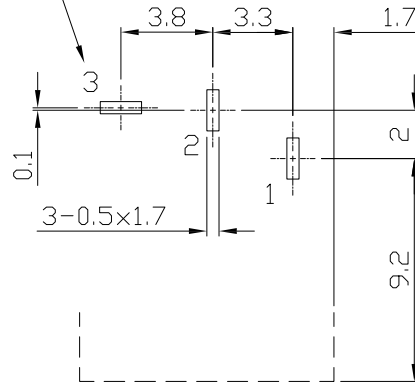


SECTION AA

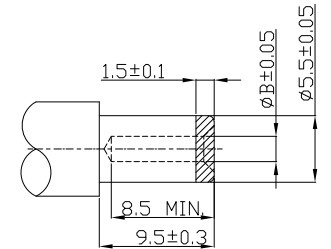
Specification:

- 1.Rating : DC 24V 4A.
- 2.Contact resistance : ≤30mΩ
- 3.Insulation resistance : ≥100MΩ (500V DC).
- 4.Withstanding voltage : 500VAC.
- 5.Insertion and extraction force : 0.3~3Kgs.
- 6.Life test : 5,000 cycles min.
- 7.Operation temperature range:-25°C~70°C

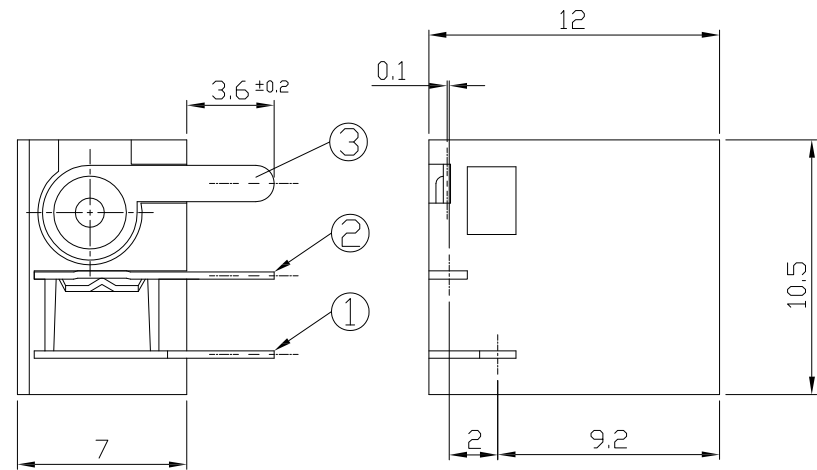
TERMINAL NO.



Model No.	H	J
CENTER PIN(A)	∅2.0mm	∅2.5mm
PLUG O.D.(B)	2.1mm	2.6mm



DC MATE PLUG



PC BOARD HOLE LAYOUT (TOLS: ±0.1)  
(VIEW FROM INSERTION TO PCB)

Bill of materials:

NO.	PARTS	MATERIAL	Q'TY	FINISHING	TOLERANCE	ANGLES	UNITS
⑤	CASING	PBT/GF RESIN	1	BLACK			mm
④	PIN	BRASS	1	Ni-PLATED	X≤5=±0.10		MAT'L
③	EARTH TERMINAL	BRASS	0.3t	Ag-PLATED	X> 5=±0.30		SEE NOTE
②	SHUNT TERMINAL	BRASS	0.25t	Ag-PLATED			FINISH
①	TIP SPRING	COPPER ALLOY	0.25t	Ag-PLATED			SEE NOTE
					THESE DRAWINGS AND SPECIFICATIONS ARE THE PROPERTY OF ACCURATE INNOTECH INC AND SHALL NOT BE REPRODUCED, COPIED OR USED IN ANY MANNER WITHOUT THE PRIOR WRITTEN CONSENT OF ACCURATE INNOTECH INC.		
							Q'TY

雅安科技有限公司 ACCURATE INNOTECH INC.			
TITLE: DC POWER JACK		PART NO.: DCD0-87000	
DR: <i>Ricky</i> 2019/08/27		DWG NO.: AD0-87000	
CHKD: <i>Ricky</i> 2019/08/27		SCALE	SHEET
APPD:		1:1	1/1
		REV.	CUSTOMER DRAWING
		A	