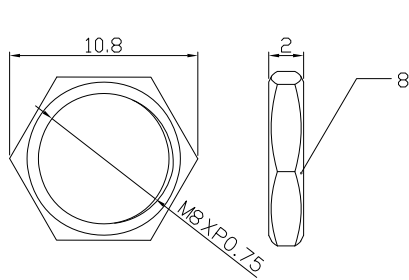
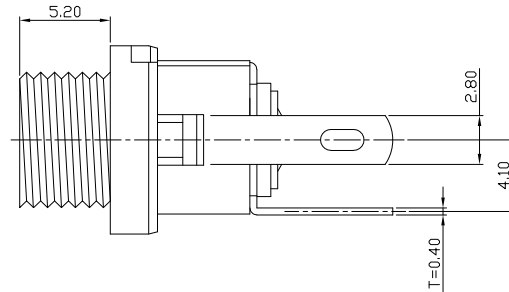
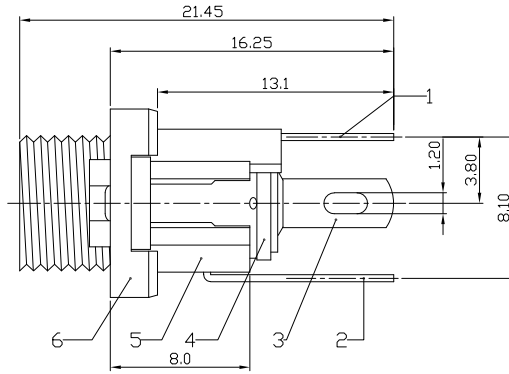
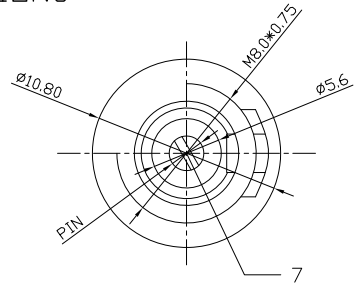




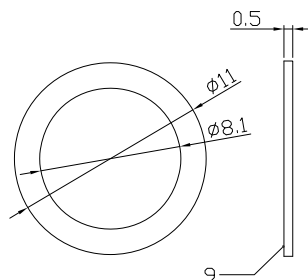
RoHS
Compliant
2002/95/EC

REV.	ECN.	NO.	APPD.

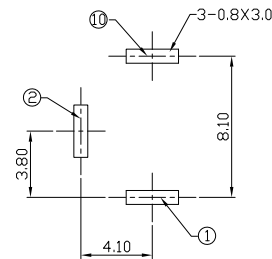
DIMENSIONS



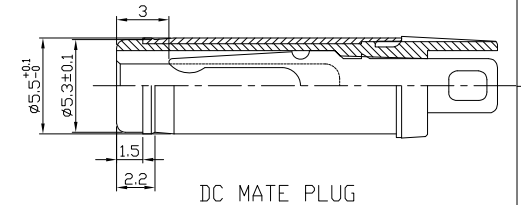
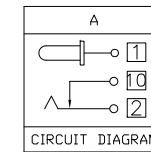
Nut



Washer



P.C.B LAYOUT



DC MATE PLUG

Model No.	H	I	J
CENTER PIN	∅2.0	∅2.35	∅2.5

MODEL CODE:

DCE0-00260- A □ P0 BK S 0 4

(1) (2) (3)(4) (5) (6) (7)(8) (9)

(1):Series type:DIP DC POWER JACK.

(2):Series No.

(3):Schematic option: A

(4):Center pin diameter:

H=∅2.0 , I=∅2.35 , J=∅2.5

(5):Material of housing:

P□=POM

(6):Housing color:

BK=Black

(7):Terminal plating

S=Silver(Ag)

(8):Special option:

0=No special option

(9):Packing mode:

4=Bag packing

Specification:

1.Rating : DC 30V 0.3A.

2.Contact resistance : ≤100mΩ.

3.Insulation resistance : ≥100MΩ (500VDC).

4.Withstanding voltage : 500VAC .

5.Insertion and extraction force : 0.3~3Kgs.

6.life test : 5000cycles min.

7.□peration temperature range:-25°C~85°C

Bill of materials:

9	WASHER-2	SPCC	1	Ni PLATED
8	NUT	BRASS	1	Ni PLATED
7	PLUG PIN	BRASS	1	Ni PLATED
6	SOCKET	BRASS	1	Ni PLATED
5	CASE	POM	1	BLACK
4	WASHER-1	PAPER TAPE	2	RED
3	SPRING TERMINAL	PBS STRIP	1	Ag PLATED
2	CONTACT	BRASS STRIP	1	Ag PLATED
1	TERMINAL	BRASS STRIP	1	Ag PLATED
NO.	PARTS	MATERIAL	Q'TY	FINISHING

GENERAL TOLERANCE	UNITS mm
WITHIN 1.5mm±0.1mm	MAT'L
OVER 1.5mm±0.2mm	SEE NOTE
	FINISH
	SEE NOTE
	Q'TY

雅安科技有限公司 ACCURATE INNOTECH INC.			
TITLE: DIP DC POWER JACK		PART NO.: DCE0-00260	
DR: Ricky 2019/03/18		DWG NO.: AZJ-00260	
CHKD: Ricky 2019/03/18		SCALE	SHEET
APPD:		1:1	1/1
		REV.	CUSTOMER
		A	DRAWING

THESE DRAWINGS AND SPECIFICATIONS ARE THE PROPERTY OF ACCURATE INNOTECH INC AND SHALL NOT BE REPRODUCED, COPIED OR USED IN ANY MANNER WITHOUT THE PRIOR WRITTEN CONSENT OF ACCURATE INNOTECH INC.