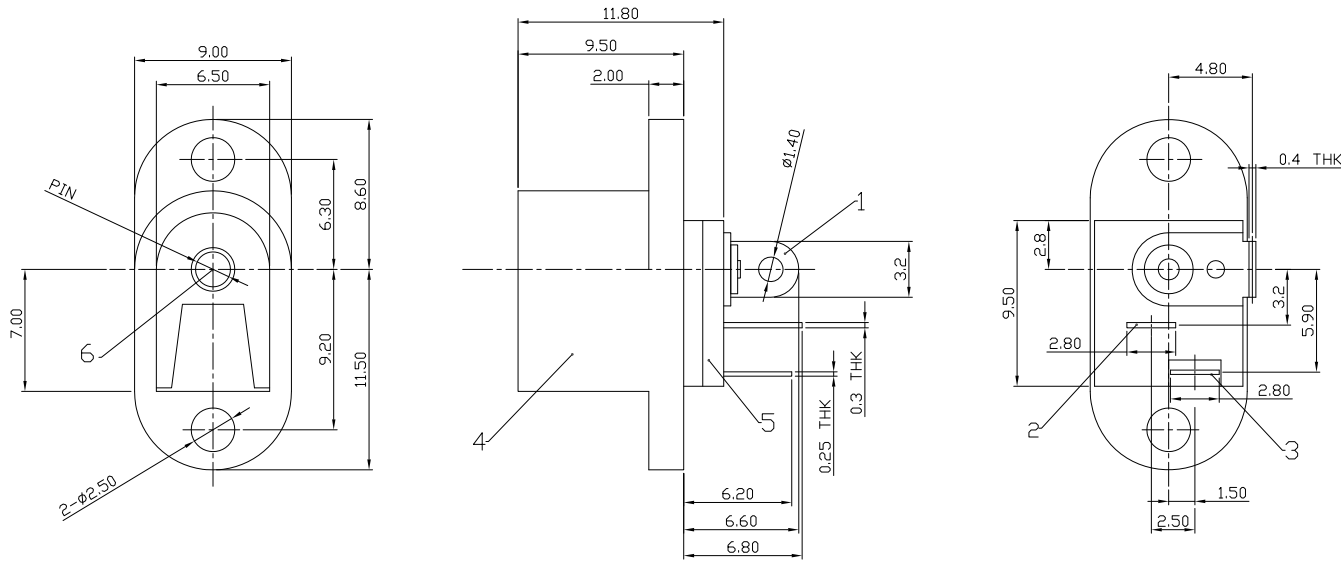




RoHS
Compliant
2002/95/EC

REV.	ECN.	NO.	APPD.

DIMENSIONS



MODEL CODE:

DCE0-02050- A □ 66 BK S 0 4

(1) (2) (3)(4) (5) (6) (7)(8) (9)

(1):Series type:DIP DC POWER JACK.

(2):Series No.

(3):Schematic option: A

(4):Center pin diameter:

H=ø2.0 , I=ø2.35 , J=ø2.5

(5):Material of housing:

66=PA66

(6):Housing color:

BK=Black

(7):Terminal plating

S=Silver(Ag)

(8):Special option:

0=No special option

(9):Packing mode:

4=Bag packing

Specification:

1.Rating : DC 30V 0.3A.

2.Contact resistance : ≤100mΩ.

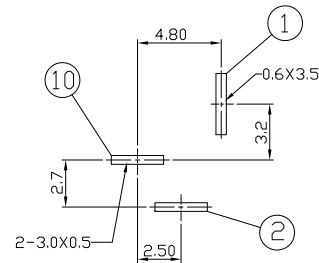
3.Insulation resistance : ≥100MΩ (500VDC).

4.Withstanding voltage : 500VAC .

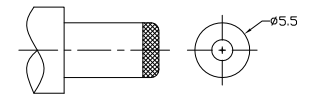
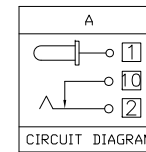
5.Insertion and extraction force : 0.3~3Kgs.

6.life test : 5000cycles min.

7. Operation temperature range:-25°C ~85°C



P.C.B LAYOUT



DC MATE PLUG

Model No.	H	I	J
CENTER PIN	ø2.0	ø2.35	ø2.5

Bill of materials:

NO.	PARTS	MATERIAL	Q'TY	FINISHING
6	PLUG PIN	BRASS	1	Ni PLATED
5	TERMINAL BASE	PHENOLIC RESIN	1	NATURAL
4	CASE	NYLON	1	BLACK
3	SPRING TERMINAL	SUS STRIP	1	Ag PLATED
2	TERMINAL	BRASS STRIP	1	Ag PLATED
1	TERMINAL	BRASS STRIP	1	Ag PLATED

GENERAL TOLERANCE
WITHIN 1.5mm±0.1mm
OVER 1.5mm±0.2mm

UNITS mm

MAT'L
SEE NOTE

FINISH
SEE NOTE

Q'TY

THESE DRAWINGS AND SPECIFICATIONS ARE THE PROPERTY OF ACCURATE INNOTECH INC AND SHALL NOT BE REPRODUCED, COPIED OR USED IN ANY MANNER WITHOUT THE PRIOR WRITTEN CONSENT OF ACCURATE INNOTECH INC.

雅安科技有限公司 ACCURATE INNOTECH INC.			
TITLE: DIP DC POWER JACK		PART NO.: DCE0-02050	
DR: <i>Ricky</i> 2019/03/18		DWG NO.: AZJ-02050	
CHKD: <i>Ricky</i> 2019/03/18		SCALE 1:1	SHEET 1/1
APPD:		REV. A	CUSTOMER DRAWING