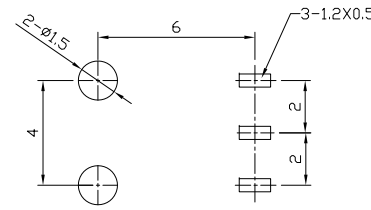
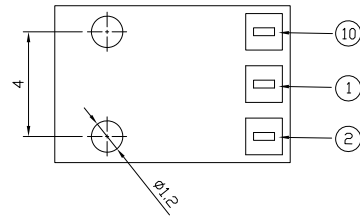
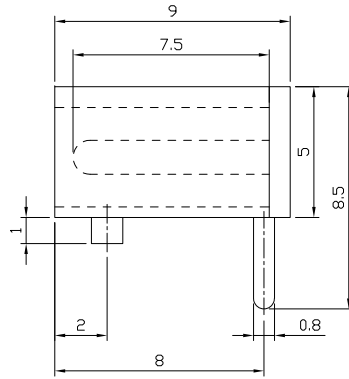
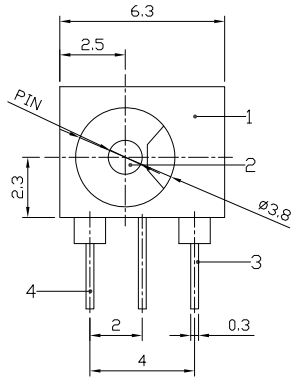




RoHS
Compliant
2002/95/EC

REV.	ECN.	NO.	APPD.

DIMENSIONS



P.C.B LAYOUT

MODEL CODE:

DCE0-02130- A □ 66 BK S 0 4

(1) (2) (3)(4) (5) (6) (7)(8) (9)

(1):Series type:DIP DC POWER JACK.

(2):Series No.

(3):Schematic option: A

(4):Center pin diameter:

C=∅1.0 , E=∅1.3

(5):Material of housing:

66=PA66

(6):Housing color:

BK=Black

(7):Terminal plating

S=Silver(Ag)

(8):Special option:

0=No special option

(9):Packing mode:

4=Bag packing

Specification:

1.Rating : DC 30V 0.3A.

2.Contact resistance : ≤100mΩ.

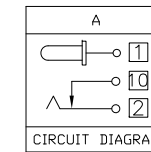
3.Insulation resistance : ≥100MΩ (500VDC).

4.Withstanding voltage : 500VAC .

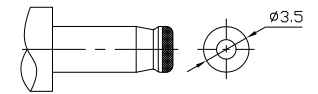
5.Insertion and extraction force : 0.3~3Kgs.

6.life test : 5000cycles min.

7.∅peration temperature range:-25°C ~85°C



CIRCUIT DIAGRAM



DC MATE PLUG

Model No.	C	E
CENTER PIN	∅1.0	∅1.3

Bill of materials:

NO.	PARTS	MATERIAL	Q'TY	FINISHING
5	COVER	NYLON	1	BLACK
4	TERMINAL	BRASS	1	Ag PLATED
3	TERMINAL	BRASS	1	Ag PLATED
2	PLUG PIN	BRASS	1	Ag PLATED
1	CASE	NYLON	1	BLACK

GENERAL TOLERANCE	UNITS
WITHIN 1.5mm±0.1mm	mm
OVER 1.5mm±0.2mm	mm

THESE DRAWINGS AND SPECIFICATIONS ARE THE PROPERTY OF ACCURATE INNOTECH INC AND SHALL NOT BE REPRODUCED, COPIED OR USED IN ANY MANNER WITHOUT THE PRIOR WRITTEN CONSENT OF ACCURATE INNOTECH INC.

MAT'L	FINISH	Q'TY
SEE NOTE	SEE NOTE	

TITLE:	PART NO.:
DIP DC POWER JACK	DCE0-02130
DR: Ricky 2019/03/19	DWG NO.: AZJ-02130
CHKD: Ricky 2019/03/19	
APPD:	

SCALE	SHEET	REV.	CUSTOMER DRAWING
1:1	1/1	A	