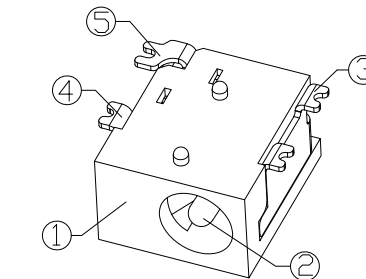
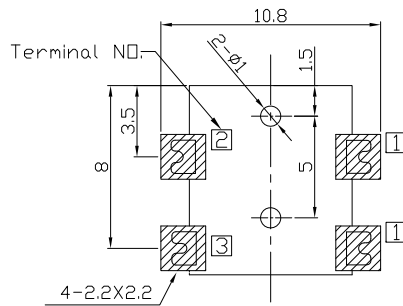
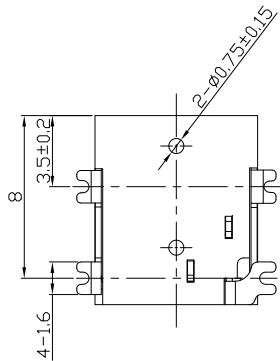
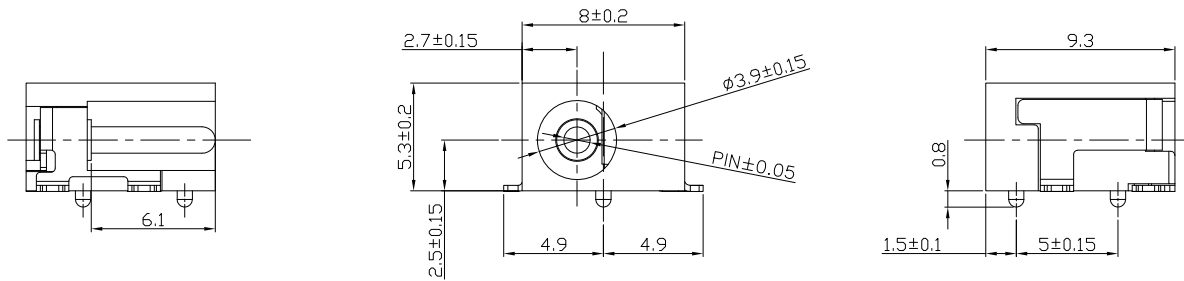




RoHS  
Compliant  
2002/95/EC

REV.	ECN.	NO.	APPD.

### DIMENSIONS



### MODEL CODE:

DCS0-00330-A □ 9T BK S 0 1

(1) (2) (3)(4)(5) (6) (7)(8) (9)

(1):Series type:SMD DC POWER JACK.

(2):Series No.

(3):Schematic option: A

(4):Center pin diameter:

E=Ø1.3mm, G=Ø1.65mm

(5):Material of housing:

9T=PA9T

(6):Housing color:

BK=Black

(7):Terminal plating

S=Silver(Ag)

(8):Special option:

0=No special option

(9):Packing mode:

1=Reel packing

### Specification:

1.Rating :DC 16V 3A.

2.Contact resistance : ≤30mΩ

3.Insulation resistance : ≥100MΩ (DC500V);

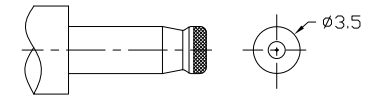
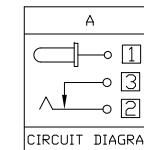
4.Withstanding voltage: 500VAC.

5.Insertion and extraction force: 3~30N.

6.life test: 5000cycles min.

7. Operation temperature range:-25°C~85°C

RECOMMENDED P.C.B. LAYOUT  
UNSPECIFIED TOLERANCE:±0.05  
(Copper-sided VIEW)



Model No.	E	G
CENTER PIN	Ø1.3	Ø1.65

### Bill of materials:

NO.	PARTS	MATERIAL	Q'TY	FINISHING
5	Shunt terminal	Brass,0.3t	1	Silver plating
4	Tip spring	Phosphor bronze,0.3t	1	Silver plating
3	Center pin terminal	Brass,0.3t	1	Silver plating
2	Center pin	Brass	1	CuSn/Ni plating
1	Housing	PA9T, UL94V-0	1	See p/n info

TOLERANCE	ANGLES	UNITS
.X ±0.30	X°, ±5°	mm
.XX ±0.20	.X° ±3°	MAT'L
.XXX ±0.10		SEE NOTE
		FINISH
		SEE NOTE
		Q'TY

雅安科技有限公司 ACCURATE INNOTECH INC.			
TITLE: SMD DC POWER JACK		PART NO.: DCS0-00330	
DR: Ricky 2023/08/04		DWG NO.: ASS-00330	
CHKD: Ricky 2023/08/04		SCALE	SHEET
APPD:		1:1	1/1
		REV.	CUSTOMER
		A	DRAWING

THESE DRAWINGS AND SPECIFICATIONS ARE THE PROPERTY OF ACCURATE INNOTECH INC AND SHALL NOT BE REPRODUCED, COPIED OR USED IN ANY MANNER WITHOUT THE PRIOR WRITTEN CONSENT OF ACCURATE INNOTECH INC.