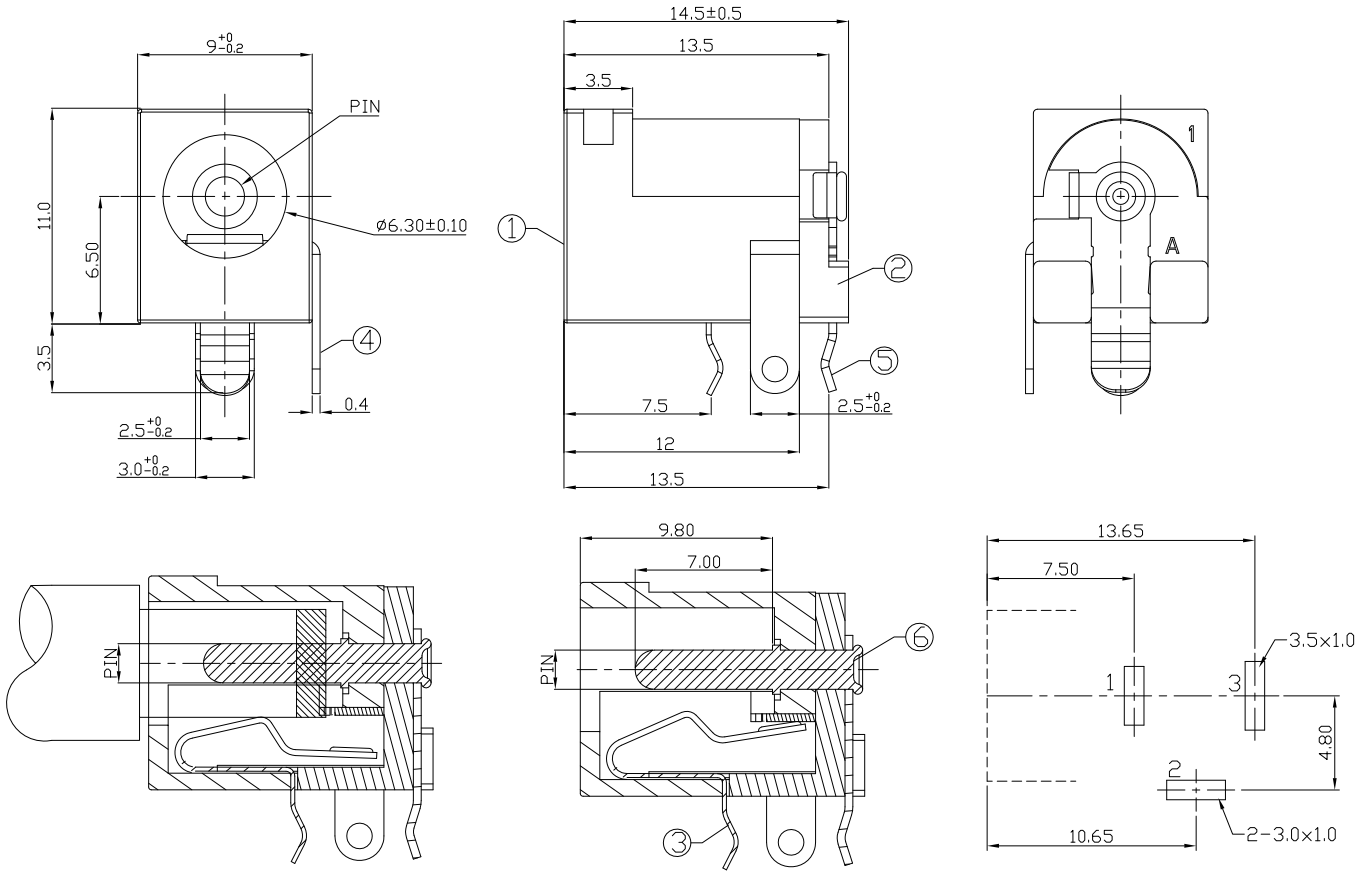




RoHS  
Compliant  
2002/95/EC

REV.	ECN. NO.	APPD.

DIMENSIONS



MODEL CODE:

DCS0-0203E- A □ PB BK S 0 4

(1) (2) (3)(4) (5) (6) (7)(8) (9)

(1):Series type:DIP DC POWER JACK.

(2):Series No.

(3):Schematic option: A

(4):Center pin diameter:

G= $\phi 1.65$  , H= $\phi 2.0$  , J= $\phi 2.5$

(5):Material of housing:

PB=PBT

(6):Housing color:

BK=Black

(7):Terminal plating

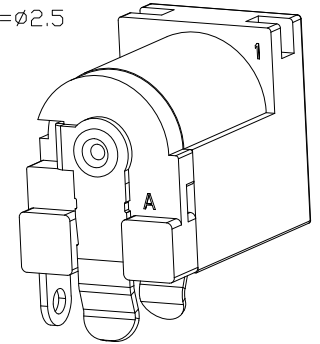
S=Silver(Ag)

(8):Special option:

0=No special option

(9):Packing mode:

4=Bag packing



Specification:

1.Rating : DC 30V 1A.

2.Contact resistance :  $\leq 100m\Omega$

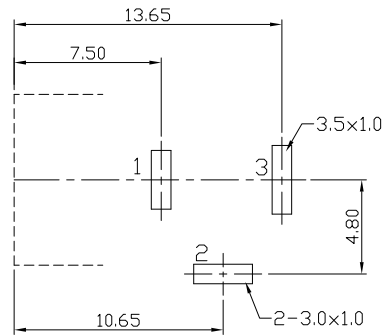
3.Insulation resistance :  $\geq 100M\Omega$  (DC250V).

4.Withstanding voltage: 500VAC .

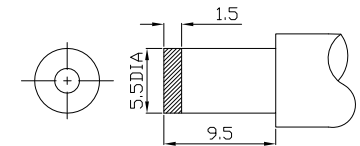
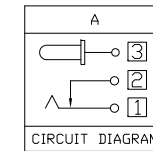
5.Insertion and extraction force: 3~30N.

6.life test: 5000cycles min.

7.Operation temperature range:-25°C~85°C



P.C.B LAYOUT  
TOP VIEW



DC MATE PLUG

Model No.	G	H	J
CENTER PIN	$\phi 1.65$	$\phi 2.0$	$\phi 2.5$

Bill of materials:

NO.	PARTS	MATERIAL	Q'TY	FINISHING
6	PIN	BRASS	1	Ni-Plating
5	FLAP FOOT	BRASS	1	Ag-Plating
4	CURVE PIECE	BRASS	1	Ag-Plating
3	SPRING PIECE	BRONZE	1	Ag-Plating
2	COVER	PBT	1	UL94V-0 BLACK
1	HOUSING	PBT	1	UL94V-0 BLACK

TOLERANCE	ANGLES	UNITS
.X ± 0.3	X°.±5°	mm
.XX ± 0.2	.X°.±3°	MAT'L
.XXX ± 0.1		SEE NOTE
		FINISH
		SEE NOTE
		Q'TY

UNITS	mm
MAT'L	SEE NOTE
FINISH	SEE NOTE
Q'TY	

雅安科技有限公司 ACCURATE INNOTECH INC.			
TITLE: DIP DC POWER JACK		PART NO.: DCS0-0203E	
DR: Ricky 2019/03/21		DWG NO.: ASS-0203E	
CHKD: Ricky 2019/03/21		SCALE	SHEET
APPD:		1:1	1/1
		REV.	CUSTOMER DRAWING
		A	

THESE DRAWINGS AND SPECIFICATIONS ARE THE PROPERTY OF ACCURATE INNOTECH INC AND SHALL NOT BE REPRODUCED, COPIED OR USED IN ANY MANNER WITHOUT THE PRIOR WRITTEN CONSENT OF ACCURATE INNOTECH INC.