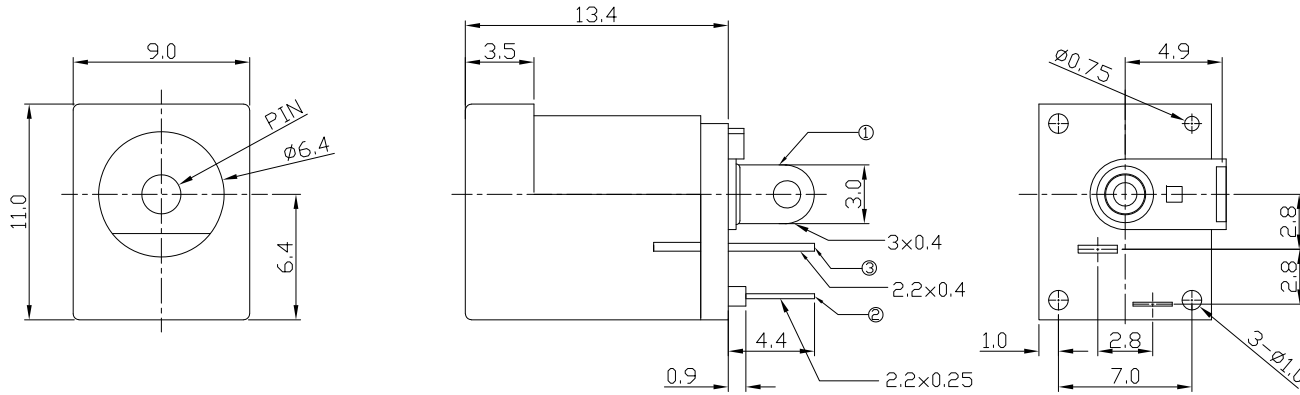




RoHS
Compliant
2002/95/EC

REV.	ECN.	NO.	APPD.

DIMENSIONS



MODEL CODE:

DCS0-0203H- A □ PB BK I 0 3

(1) (2) (3)(4)(5) (6) (7)(8) (9)

(1):Series type:DIP DC POWER JACK.

(2):Series No.

(3):Schematic option: A

(4):Center pin diameter:

H= $\phi 2.0$ mm , J= $\phi 2.5$ mm

(5):Material of housing:

PC=PBT

(6):Housing color:

BK=Black

(7):Terminal plating

T=Tin(Sn)

(8):Special option:

0=No special option

(9):Packing mode:

3=Plastic box packing

Specification:

1.Rating : DC 24V 3.5A.

2.Contact resistance : ≤ 100 m Ω .

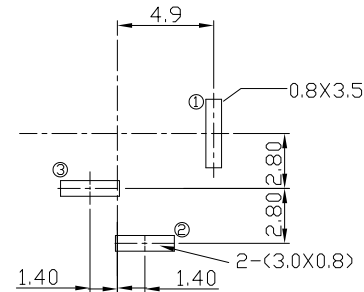
3.Insulation resistance : ≥ 100 M Ω (DC250V).

4.Withstanding voltage: 500VAC .

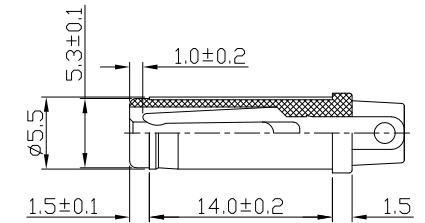
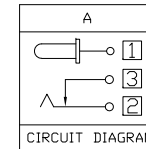
5.Insertion and extraction force: 3~30N.

6.life test: 5000cycles min.

7.Operation temperature range:-25°C~85°C



P.C.B LAYOUT
TOP VIEW



DC MATE PLUG

Model No.	H	J
CENTER PIN	$\phi 2.0$	$\phi 2.5$

Bill of materials:

NO.	PARTS	MATERIAL	Q'TY	FINISHING
6	PIN	BRASS	1	Ni-Plating
5	CURVE PIECE	BRASS	1	Sn-Plating
4	FLAT PIECE	BRASS	1	Sn-Plating
3	SPRING	PBS	1	Sn-Plating
2	COVER	PBT	1	
1	HOUSING	PBT	1	

TOLERANCE	ANGLES	UNITS
.X ± 0.3	X° $\pm 5^\circ$	mm
.XX ± 0.2	.X° $\pm 3^\circ$	MAT'L
.XXX ± 0.1		SEE NOTE
		FINISH
		SEE NOTE
		Q'TY

雅安科技有限公司 ACCURATE INNOTECH INC.			
TITLE: DIP DC POWER JACK		PART NO.: DCS0-0203H	
DR: <i>Ricky</i> 2019/03/26		DWG NO.: ASS-0203H	
CHKD: <i>Ricky</i> 2019/03/26		SCALE 1:1	SHEET 1/1
APPD:		REV. A	CUSTOMER DRAWING

THESE DRAWINGS AND SPECIFICATIONS ARE THE PROPERTY OF ACCURATE INNOTECH INC AND SHALL NOT BE REPRODUCED, COPIED OR USED IN ANY MANNER WITHOUT THE PRIOR WRITTEN CONSENT OF ACCURATE INNOTECH INC.