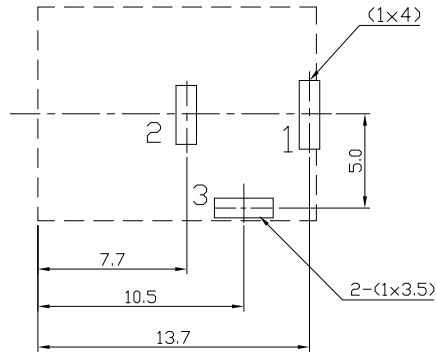




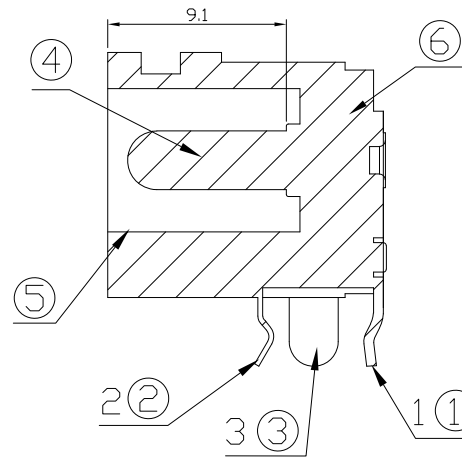
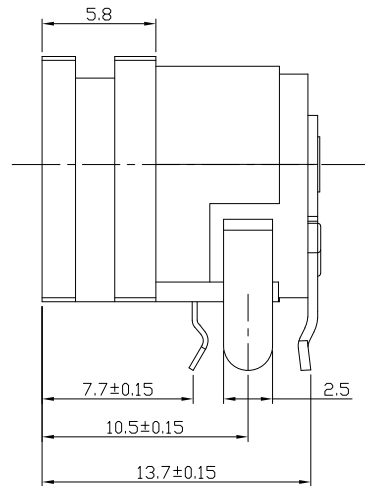
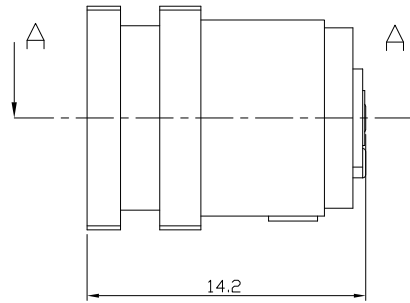
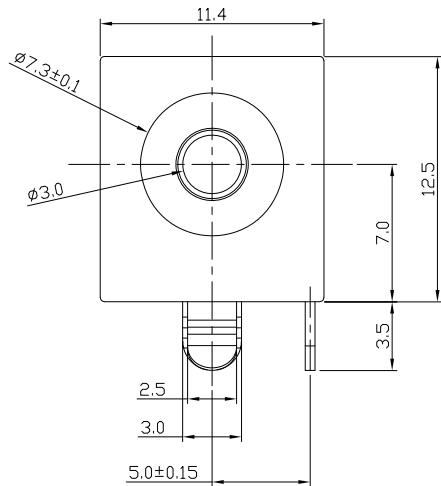
RoHS
Compliant
2002/95/EC

REV.	ECN.	NO.	APPD.

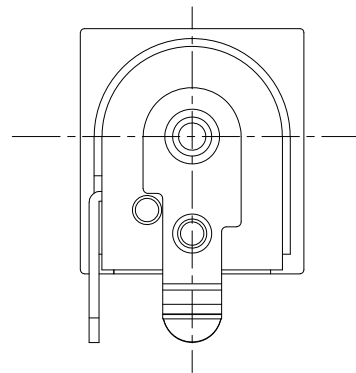
DIMENSIONS



PCB LAYOUT
TOP VIEW



SECTION A-A



MODEL CODE:

DCS0-02070- A K PB BK S 0 4

(1) (2) (3)(4)(5) (6) (7)(8) (9)

(1):Series type:DIP DC POWER JACK.

(2):Series No.

(3):Schematic option: A

(4):Center pin diameter:
K=φ3.0

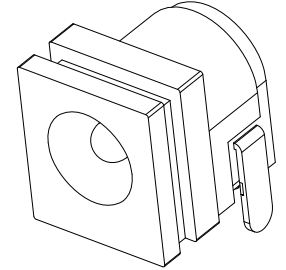
(5):Material of housing:
PB=PBT

(6):Housing color:
BK=Black

(7):Terminal plating
S=Silver(Ag)

(8):Special option:
0=No special option

(9):Packing mode:
4=Bag packing



Specification:

1.Rating :DC 24V 5A.

2.Contact resistance :≤100mΩ

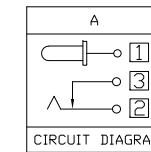
3.Insulation resistance :≥100MΩ (DC250V).

4.Withstanding voltage: 500VAC .

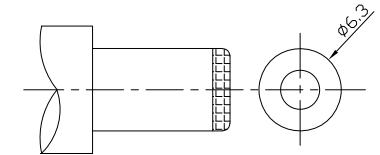
5.Insertion and extraction force: 3~30N.

6.life test: 5000cycles min.

7. Operation temperature range:-25°C~85°C



Model No.	K
CENTER PIN	φ3.0



DC MATE PLUG

Bill of materials:

NO.	PARTS	MATERIAL	Q'TY	FINISHING
6	HOUSING	PBT(Black)	1	
5	COVER	PBT(Black)	1	
4	PIN	BRASS	1	Ag-Plated
3	TERMINAL	BRASS	1	Ag-Plated
2	TERMINAL	PHOSPHOR BRONZE	1	Ag-Plated
1	TERMINAL	BRASS	1	Ag-Plated

TOLERANCE	ANGLES	UNITS
.X ± 0.25	X°.±5°	mm
.XX ± 0.15	.X°.±3°	MAT'L
.XXX ± 0.1		SEE NOTE
		FINISH
		SEE NOTE
		Q'TY

UNITS	mm
MAT'L	SEE NOTE
FINISH	SEE NOTE
Q'TY	

雅安科技有限公司 ACCURATE INNOTECH INC.			
TITLE: DIP DC POWER JACK		PART NO.: DCS0-02070	
DR: <i>Ricky</i> 2019/03/22		DWG NO.: ASS-02070	
CHKD: <i>Ricky</i> 2019/03/22		SCALE	SHEET
APPD:		1:1	1/1
		REV.	CUSTOMER
		A	DRAWING

THESE DRAWINGS AND SPECIFICATIONS ARE THE PROPERTY OF ACCURATE INNOTECH INC AND SHALL NOT BE REPRODUCED, COPIED OR USED IN ANY MANNER WITHOUT THE PRIOR WRITTEN CONSENT OF ACCURATE INNOTECH INC.