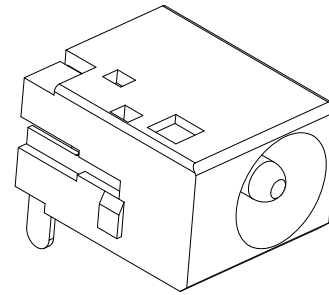
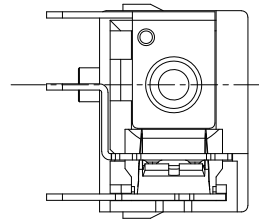
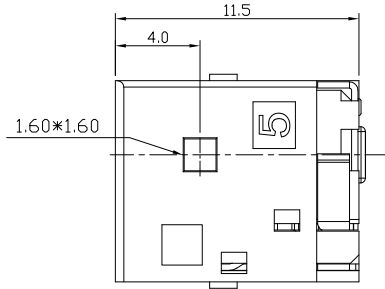
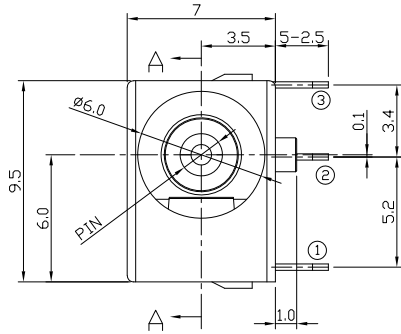




RoHS
Compliant
2002/95/EC

REV.	ECN.	NO.	APPD.

DIMENSIONS

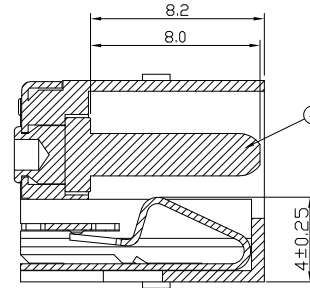
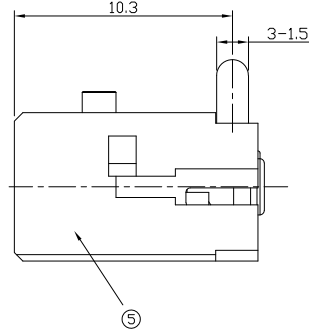
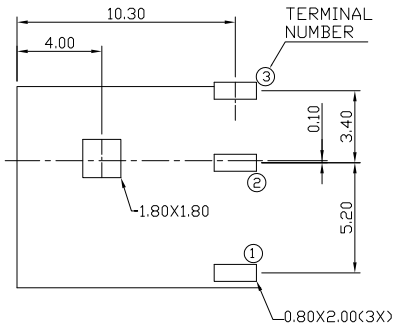


MODEL CODE:

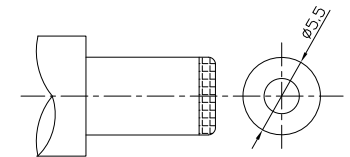
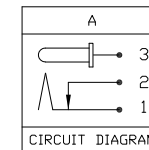
DCS0-0217A-A □ 66 BK I 0 4
 (1) (2) (3)(4)(5) (6) (7)(8) (9)
 (1):Series type:DIP DC POWER JACK.
 (2):Series No.
 (3):Schematic option: A
 (4):Center pin diameter:
 H=∅2.0mm, J=∅2.5mm
 (5):Material of housing:
 66=PA66
 (6):Housing color:
 BK=Black
 (7):Terminal plating
 T=Tin(Sn)
 (8):Special option:
 0=No special option
 (9):Packing mode:
 4=Bag packing

Specification:

- 1.Rating :DC 16V 2.5A.
- 2.Contact resistance : ≤50mΩ
- 3.Insulation resistance : ≥100MΩ
- 4.Withstanding voltage: 500VAC .
- 5.Insertion and extraction force: 3~30N.
- 6.life test: 5000cycles min.
- 7.Operation temperature range:-25°C~85°C



SECTION A-A



DC MATE PLUG

Model No.	H	J
CENTER PIN	∅2.0	∅2.5

RECOMMENDED PCB LAYOUT
(BOTTOM VIEW)

Bill of materials:

NO.	PARTS	MATERIAL	Q'TY	FINISHING
5	HOUSING	PA66	1	BLACK
4	CENTER PIN	BRASS	1	NI-PLATING
3	TERMINAL 3	BRASS	1	Matte Tin-PLATING
2	TERMINAL 2	BRASS	1	Matte Tin-PLATING
1	TERMINAL 1	PHOSPHOR BRONZE	1	Matte Tin-PLATING

TOLERANCE	ANGLES	UNITS
>5 ±0.30	X°, ±5°	mm
0~5 ±0.20	.X° ±3°	

雅安科技有限公司 ACCURATE INNOTECH INC.			
TITLE: DIP DC POWER JACK	PART NO.: DCS0-0217A		
DR: Ricky 2023/08/02	DWG NO.: ASS-0217A		
CHKD: Ricky 2023/08/02	SCALE 1:1	SHEET 1/1	REV. A
APPD:	CUSTOMER DRAWING		

THESE DRAWINGS AND SPECIFICATIONS ARE THE PROPERTY OF ACCURATE INNOTECH INC AND SHALL NOT BE REPRODUCED, COPIED OR USED IN ANY MANNER WITHOUT THE PRIOR WRITTEN CONSENT OF ACCURATE INNOTECH INC.

