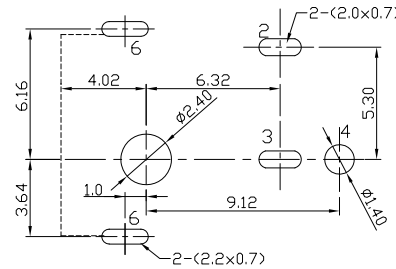
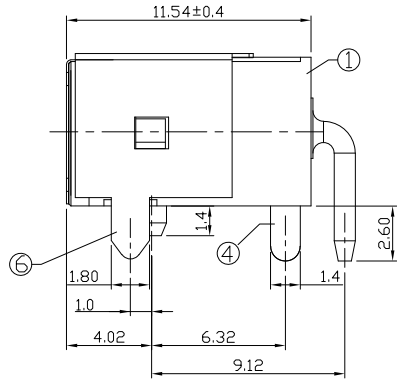
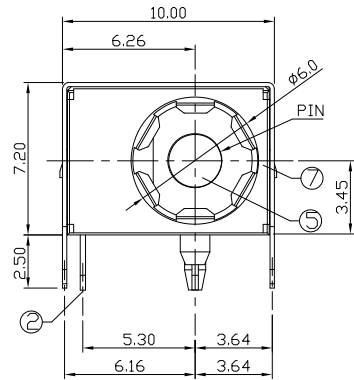




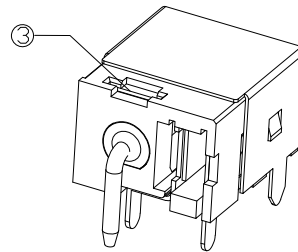
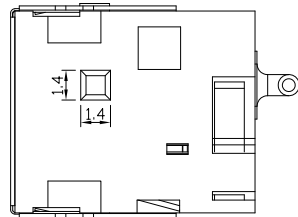
RoHS
Compliant
2002/95/EC

REV.	ECN.	NO.	APPD.

DIMENSIONS



P.C.B LAYOUT
TOP VIEW



MODEL CODE:

DCS0-0217G-A □ 9T BK I 0 1

(1) (2) (3)(4)(5) (6) (7)(8) (9)

(1):Series type:DIP DC POWER JACK.

(2):Series No.

(3):Schematic option: A

(4):Center pin diameter:

G=∅1.65mm, H=∅2.0mm, J=∅2.5mm

(5):Material of housing:

9T=PA9T

(6):Housing color:

BK=Black

(7):Terminal plating

T=Tin(Sn)

(8):Special option:

0=No special option

(9):Packing mode:

1=Reel packing

Specification:

1.Rating :DC 30V 10A.

2.Contact resistance : ≤50mΩ

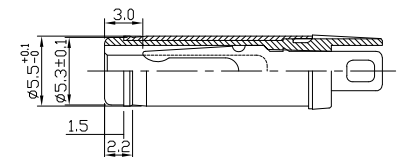
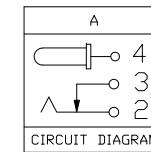
3.Insulation resistance : ≥100MΩ

4.Withstanding voltage: 500VAC 1 MINUTE.

5.Insertion and extraction force: 3~30N.

6.life test: 5000cycles min.

7.Operation temperature range:-25°C~85°C



DC MATE PLUG

Model No.	G	H	J
CENTER PIN	∅1.65	∅2.0	∅2.5

Bill of materials:

NO.	PARTS	MATERIAL	Q'TY	FINISHING
7	COVER	SUS301	1	Ni-Plating
6	CONTACT FOOT	C2680	1	TIN-Plating
5	PIN	C2680	1	Ni-Plating
4	CONTACT FOOT	C2680	1	TIN-Plating
3	STOPPER	SUS301	1	NA
2	SPRING PIECE	C5210	1	TIN-Plating
1	HOUSING	PA9T	1	BLACK

TOLERANCE	ANGLES	UNITS
.X ±0.40	X°, ±5°	mm
.XX ±0.30	.X° ±3°	MAT'L
.XXX ±0.20		SEE NOTE
		FINISH
		SEE NOTE
		Q'TY

THESE DRAWINGS AND SPECIFICATIONS ARE THE PROPERTY OF ACCURATE INNOTECH INC AND SHALL NOT BE REPRODUCED, COPIED OR USED IN ANY MANNER WITHOUT THE PRIOR WRITTEN CONSENT OF ACCURATE INNOTECH INC.

雅安科技有限公司 ACCURATE INNOTECH INC.			
TITLE: DIP DC POWER JACK		PART NO.: DCS0-0217G	
DR: Ricky 2023/08/02		DWG NO.: ASS-0217G	
CHKD: Ricky 2023/08/02		SCALE	SHEET
APPD:		1:1	1/1
		REV.	CUSTOMER DRAWING
		A	