

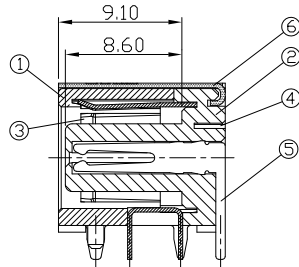
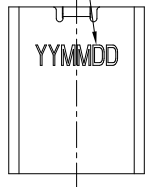


RoHS Compliant
2002/95/EC

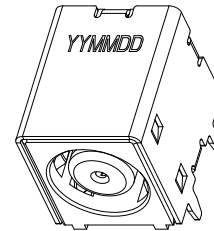
Halogen Free

DATE CODE YYMMDD
DD: DAY
MM: MONTH
YY: YEAR

DIMENSIONS

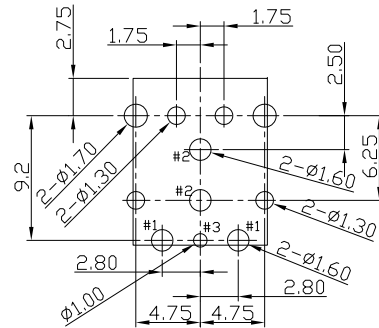
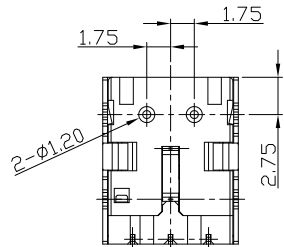
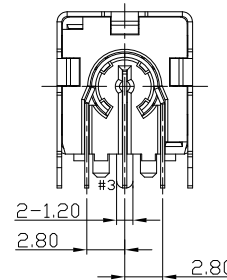
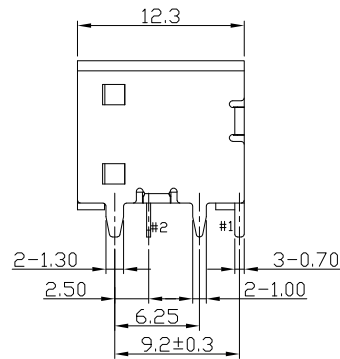
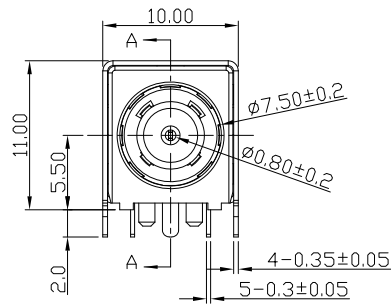


SECTION A-A
SCALE 1:1



MODEL CODE:
DCS0-0286D-D M LC BK G 0 1
(1) (2) (3)(4)(5) (6) (7)(8) (9)
(1):Series type:DIP DC POWER JACK.
(2):Series No.
(3):Schematic option: D
(4):Center pin diameter:
M=∅0.6mm
(5):Material of housing:
LC=LCP
(6):Housing color:
BK=Black
(7):Terminal plating
G=Gold(Au)
(8):Special option:
0=No special option
(9):Packing mode:
1=Reel packing

Specification:
1.Rating : DC 42V 8A.
2.Contact resistance : ≤30mΩ
3.Insulation resistance : ≥100MΩ MEASURED BY 500 VDC
4.Withstanding voltage: 500VAC FOR 1 MINUTE.
5.Insertion and extraction force: 3~30N.
6.life test: 5000cycles min.
7. Operation temperature range:-25°C~85°C



RECOMMENDED P.C.B LAYOUT
TOP VIEW (TOLERANCE:±0.05)

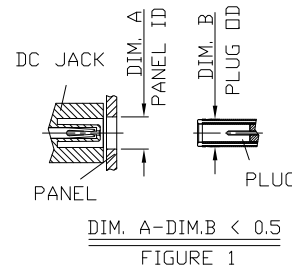
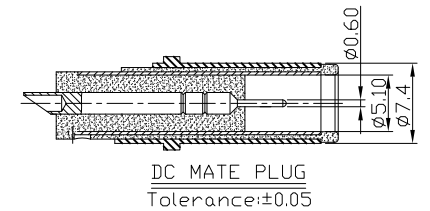
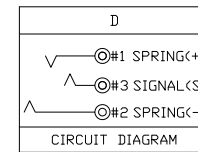


FIGURE 1



Model No.	M
CENTER PIN	∅0.6

Bill of materials:

NO.	PARTS	MATERIAL	Q'TY	FINISHING
6	SHELL	C2680 0.35T	1	Ni 60u"Min
5	SIGNAL (S)	C5210 0.3T	1	GOLD FLASH OVER Ni 50u"
4	CONTACT (+)	C5210 0.3T	1	GOLD FLASH OVER Ni 50u"
3	SPRING (-)	C5210 0.3T	1	GOLD FLASH OVER Ni 50u"
2	COVER	LCP UL 94V-0	1	BLACK
1	HOUSING	LCP UL 94V-0	1	BLACK

THESE DRAWINGS AND SPECIFICATIONS ARE THE PROPERTY OF ACCURATE INNOTECH INC AND SHALL NOT BE REPRODUCED, COPIED OR USED IN ANY MANNER WITHOUT THE PRIOR WRITTEN CONSENT OF ACCURATE INNOTECH INC.

TOLERANCE	ANGLES	UNITS	雅安科技有限公司 ACCURATE INNOTECH INC.			
.X ±0.30	X°, ±5°	mm	TITLE: DIP DC POWER JACK		PART NO.: DCS0-0286D	
.XX ±0.20	.X° ±3°	MAT'L	DR: Ricky 2023/08/04		DWG NO.: ASS-0286D	
.XXX ±0.10		SEE NOTE	CHKD: Ricky 2023/08/04			
		FINISH	APPD:		SCALE: 1:1	SHEET: 1/1
		SEE NOTE			REV: A	CUSTOMER DRAWING
		Q'TY				