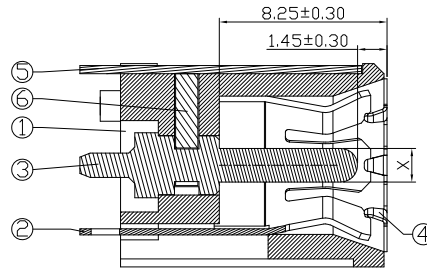
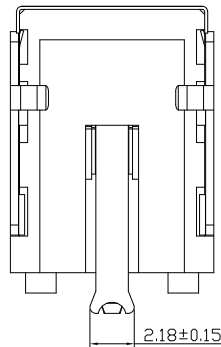
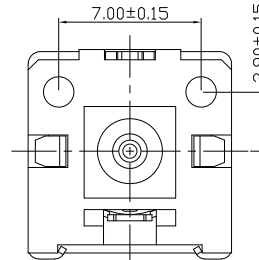
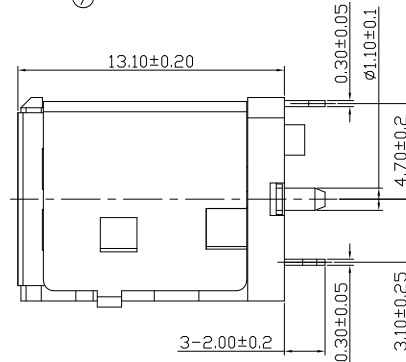
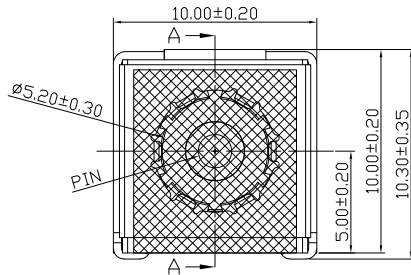
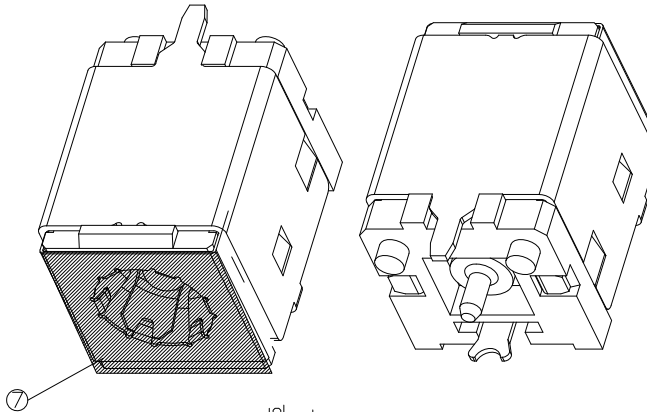
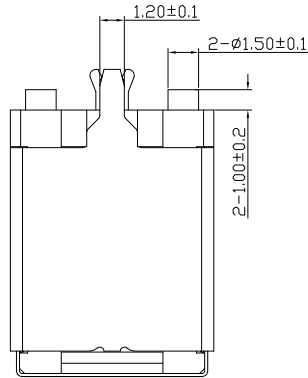




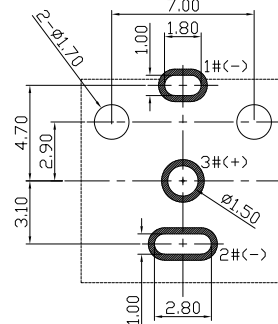
RoHS
Compliant
2002/95/EC

Halogen Free

DIMENSIONS



SECTION A-A



P.C.B LAYOUT

MODEL CODE:

DCS0-03039-B □ LC BK T 0 1

(1) (2) (3)(4) (5) (6)(7)(8) (9)

(1):Series type:DIP DC POWER JACK.

(2):Series No.

(3):Schematic option: B

(4):Center pin diameter:

G=∅1.65mm, H=∅2.0mm, J=∅2.5mm

(5):Material of housing:

LC=LCP

(6):Housing color:

BK=Black

(7):Terminal plating

T=Tin(Sn)

(8):Special option:

0=No special option

(9):Packing mode:

1=Reel packing

Specification:

1.Rating :DC 20V 10A.

2.Contact resistance :≤30mΩ

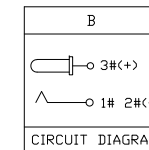
3.Insulation resistance :≥100MΩ (DC250V).

4.Withstanding voltage: 500VAC.

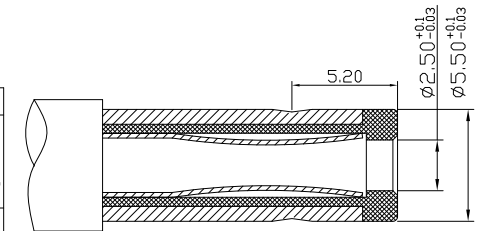
5.Insertion and extraction force: 3~30N.

6.life test: 5000cycles min.

7.∅peration temperature range:-25°C~85°C



CIRCUIT DIAGRAM



DC MATE PLUG

Model No.	G	H	J
CENTER PIN	∅1.65	∅2.0	∅2.5

Bill of materials:

NO.	PARTS	MATERIAL	Q'TY	FINISHING
7	MYLAR	T=0.1	1	
6	STOPPER	LCP E130I UL-94 V0	1	BLACK
5	SHELL	SUS301 t=0.3mm	1	Ni60U"
4	CONTACT FOOT	SUS301 t=0.15mm	1	N/A
3	PIN	HBI59-1	1	Ni50U"
2	SPRING PIECE	C5191 t=0.3mm	1	Ag15u" OVER Ni50U"
1	HOUSING	LCP E130I UL-94 V0	1	BLACK

TOLERANCE	ANGLES	UNITS
.X ±0.30	X°, ±5°	mm
.XX ±0.20	.X° ±3°	
.XXX ±0.10		

UNITS	MAT'L	FINISH	Q'TY
mm	SEE NOTE	SEE NOTE	

雅安科技有限公司 ACCURATE INNOTECH INC.			
TITLE: DIP DC POWER JACK		PART NO.: DCS0-03039	
DR: Ricky 2023/08/08		DWG NO.: ASS-03039	
CHKD: Ricky 2023/08/08		SCALE 1:1	SHEET 1/1
APPD:		REV. A	CUSTOMER DRAWING

THESE DRAWINGS AND SPECIFICATIONS ARE THE PROPERTY OF ACCURATE INNOTECH INC AND SHALL NOT BE REPRODUCED, COPIED OR USED IN ANY MANNER WITHOUT THE PRIOR WRITTEN CONSENT OF ACCURATE INNOTECH INC.