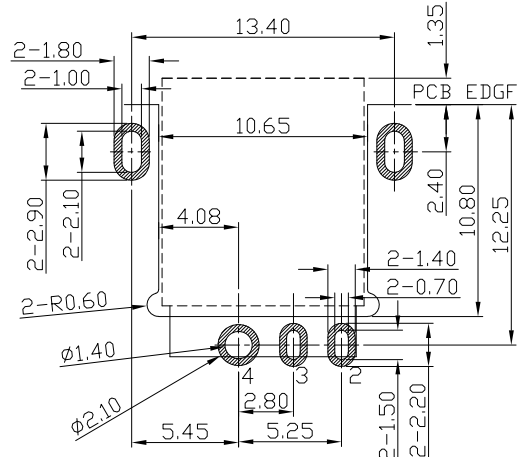
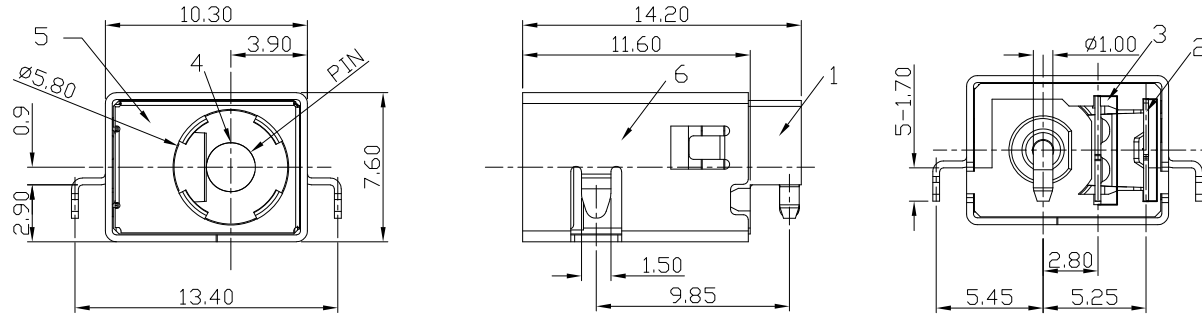




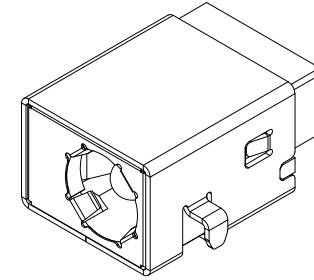
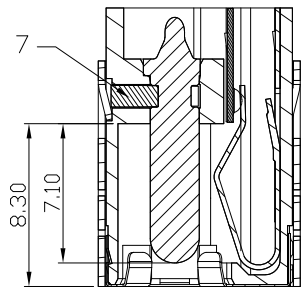
RoHS
Compliant
2002/95/EC

REV.	ECN.	NO.	APPD.

DIMENSIONS

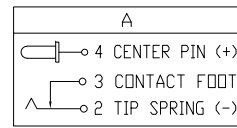


RECOMMEND P.C.B LAYOUT
TOP VIEW (TOLERANCES:0.05)

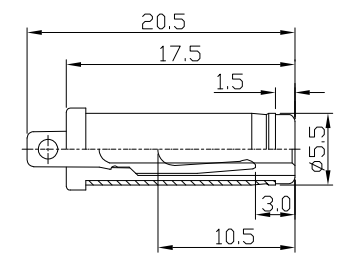


MODEL CODE:
DCS0-3017B- A □ LC BK S 0 1
(1) (2) (3)(4)(5)(6) (7)(8) (9)
(1):Series type:SMD DC POWER JACK.
(2):Series No.
(3):Schematic option: A
(4):Center pin diameter:
H=φ2.0mm , J=φ2.5mm
(5):Material of housing:
LC=LCP
(6):Housing color:
BK=Black
(7):Terminal plating
S=Silver(Ag)
(8):Special option:
0=No special option
(9):Packing mode:
1=Reel packing

Specification:
1.Rating :DC 24V 10A.
2.Contact resistance :≤30mΩ
3.Insulation resistance :≥100MΩ (DC500V).
4.Withstanding voltage: 500VAC .
5.Insertion and extraction force: 3~30N.
6.life test: 5000cycles min.
7. Operation temperature range:-25°C~85°C



Model No.	H	J
CENTER PIN	φ2.0	φ2.5



DC MATE PLUG

Bill of materials:

NO.	PARTS	MATERIAL	Q'TY	FINISHING
7	STOPPER	SUS301 t=0.3mm	1	
6	SHELL	BRASS t=0.35mm	1	Ni=60U"
5	GROUND	SUS301 t=0.10mm	1	N/A
4	PIN	BRASS	1	1st Ni=50U"2nd Ag=1U"
3	CONTACT FOOT	BRASS t=0.30	1	1st Ni=50U"2nd Ag=20U"
2	SPRING	BRONZE t=0.3mm	1	1st Ni=50U"2nd Ag=20U"
1	HOUSING	LCP UL 94V-0	1	BLACK

TOLERANCE	ANGLES	UNITS
.X ± 0.3	X°.±5°	mm
.XX ± 0.3	.X°±3°	

雅安科技有限公司 ACCURATE INNOTECH INC.			
TITLE: SMD DC POWER JACK		PART NO.: DCS0-3017B	
DR: <i>Ricky</i> 2019/03/26		DWG NO.: ASS-3017B	
CHKD: <i>Ricky</i> 2019/03/26		SCALE 1:1	SHEET 1/1
APPD:		REV. A	CUSTOMER DRAWING

THESE DRAWINGS AND SPECIFICATIONS ARE THE PROPERTY OF ACCURATE INNOTECH INC AND SHALL NOT BE REPRODUCED, COPIED OR USED IN ANY MANNER WITHOUT THE PRIOR WRITTEN CONSENT OF ACCURATE INNOTECH INC.

