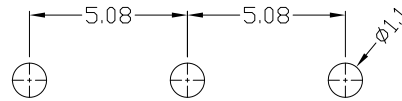
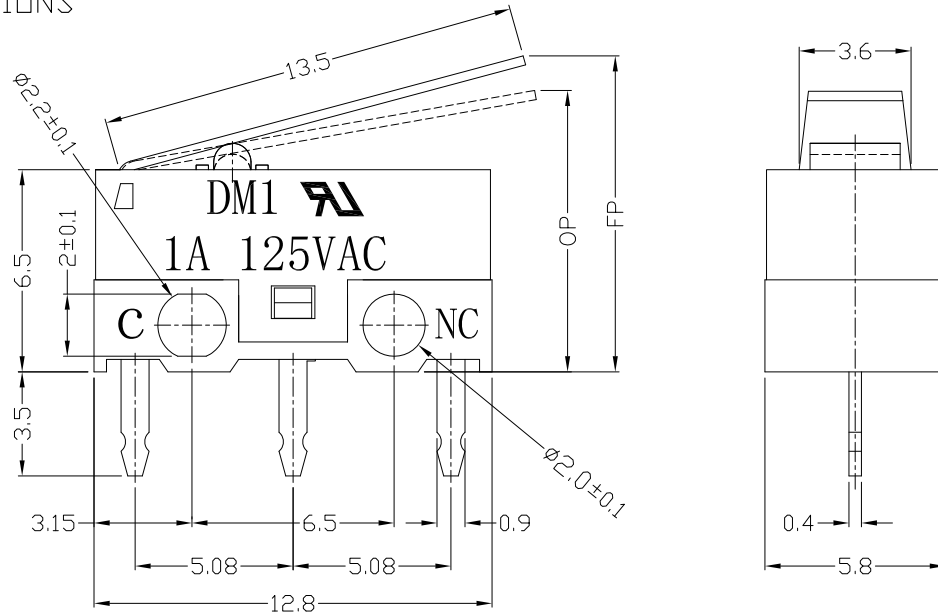




RoHS Compliant  
2002/95/EC

REV.	ECN.	NO.	APPD.

DIMENSIONS

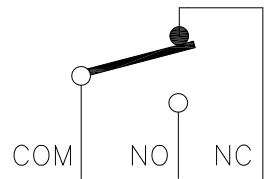


MODEL CODE

DM 1-01 X-XX-3  
1 2 3 4 5 6

P.C.B LAYOUT

- 1.Series : DM
- 2.Current Rating : 1=1A 125VAC ; 30mA DC5V
- 3.Actuator : 00=non-lever 01-99=Lever
- 4.Termination : see chart (P/C/D/T/N)
- 5.Operating Force : see chart
- 6.Button colour : 3=white
- 7.Cover type : No-0=have two lines



CIRCUIT DIAGRAM

1.Functional spec

1.1 Rated Voltage	125VAC/DC5V
1.2 Rated Current	1A/30mA
1.3 Contact Resistance	≤100mΩ(Initial value)
1.4 Operating Force	30(20~50gf) 40±20gf
1.5 Bounce Time	
1.6 Free Position	10.4±0.8mm
1.7 Operating Position	8.8±0.8mm
1.8 Position Travel	
1.9 Return Force	

2.Reliable Rating

2.1 Mechanical Life	1,000,000 CYCLES
2.2 Electrical Life	10,000 CYCLES
2.3 Insulation Resistance	≥100MΩ DC500V
2.4 Withstand Voltage	AC500V 1 minute
2.5 Soldering Technic	Hand Soldering
2.6 Operating Temper	-25°C ~ +65°C
2.7 Ambient Humidity Used	<85%RH

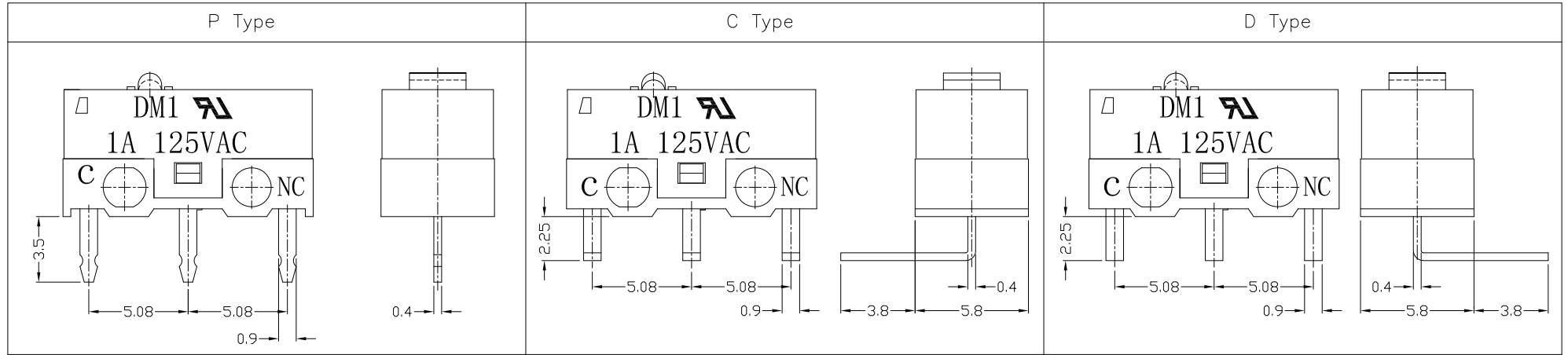
Tolerance:±0.2	UNITS mm	雅安科技有限公司 ACCURATE INNOTECH INC.			
	MAT'L	TITLE: MICRO SWITCH DM SERIES		PART NO: DM1-01P-XX-3	
	SEE NOTE	DR: Ricky 2017/2/16		DWG NO: ATD-01X-XX-3	
	FINISH	CHKD: Ricky 2017/2/16		SCALE SHEET REV. CUSTOMER	
	SEE NOTE	APPD:		1:1	1/2 A DRAWING
<small>THESE DRAWINGS AND SPECIFICATIONS ARE THE PROPERTY OF ACCURATE INNOTECH INC AND SHALL NOT BE REPRODUCED, COPIED OR USED IN ANY MANNER WITHOUT THE PRIOR WRITTEN CONSENT OF ACCURATE INNOTECH INC.</small>					



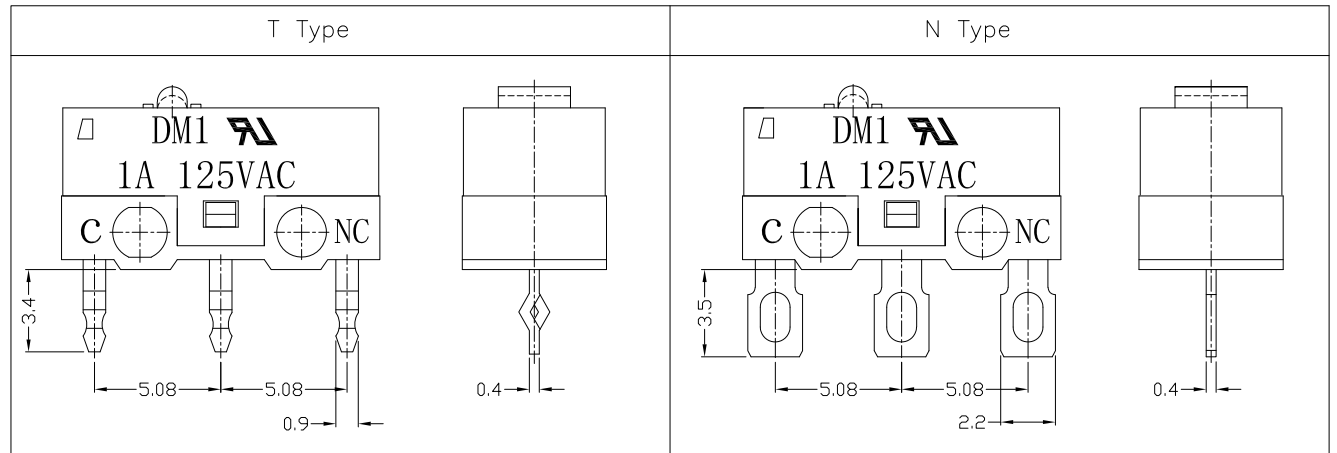
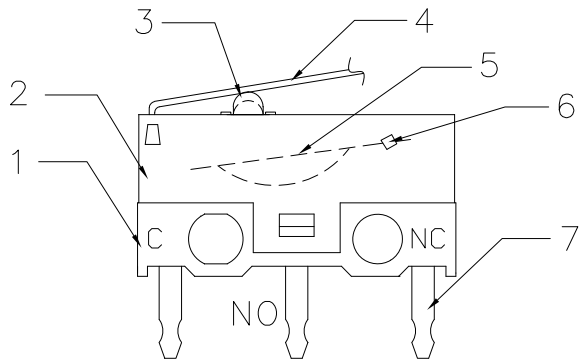
RoHS Compliant  
2002/95/EC

REV.	ECN.	NO.	APPD.

### Terminal Type



### Structure chart



### Material list

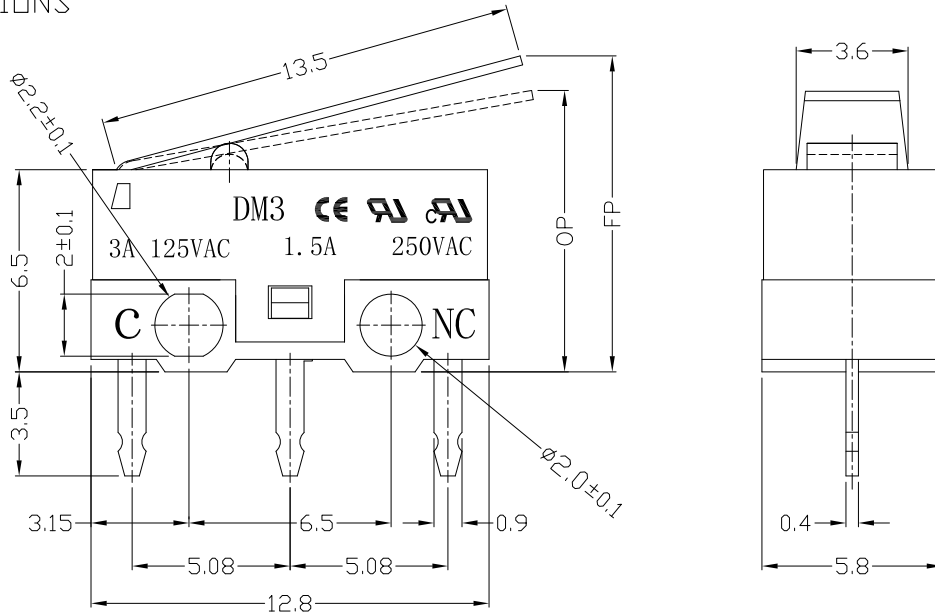
8					Tolerance:±0.2	UNITS mm	雅安科技有限公司 ACCURATE INNOTECH INC.					
7	Terminal	C2680	3			MAT'L					TITLE:	PART NO:
6	Contact	Silver alloy	1			SEE NOTE	MICRO SWITCH DM SERIES	DM1-01X-XX-3				
5	Spring Plate	C1720	1			FINISH	DR: Ricky 2017/2/16	DWG NO:				
4	Lever	SUS301	1			SEE NOTE	CHKD: Ricky 2017/2/16	ATD-01X-XX-3				
3	Button	PBT	1	WHITE	THESE DRAWINGS AND SPECIFICATIONS ARE THE PROPERTY OF ACCURATE INNOTECH INC AND SHALL NOT BE REPRODUCED, COPIED OR USED IN ANY MANNER WITHOUT THE PRIOR WRITTEN CONSENT OF ACCURATE INNOTECH INC.	Q'TY	APPD:	SCALE	SHEET	REV.	CUSTOMER	
2	Case	PBT	1	BLACK		1:1	2/2	A	DRAWING			
1	Base	PBT	1	WHITE								
NO.	PARTS	MATERIAL	Q'TY	FINISHING								



RoHS Compliant  
2002/95/EC

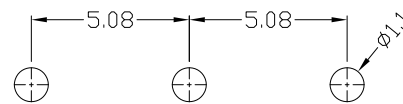
REV.	ECN.	NO.	APPD.

DIMENSIONS



1.Functional spec

1.1 Rated Voltage	125VAC/250VAC
1.2 Rated Current	3A/1.5A
1.3 Contact Resistance	≤100mΩ(Initial value)
1.4 Operating Force	30(20~50gf)   40±20gf
1.5 Bounce Time	
1.6 Free Position	10.4±0.8mm
1.7 Operating Position	8.8±0.8mm
1.8 Position Travel	
1.9 Return Force	



P.C.B LAYOUT

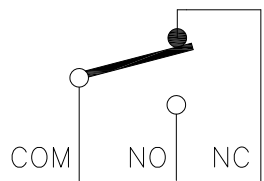
2.Reliable Rating

2.1 Mechanical Life	1,000,000 CYCLES
2.2 Electrical Life	10,000 CYCLES
2.3 Insulation Resistance	≥100MΩ DC500V
2.4 Withstand Voltage	AC500V 1 minute
2.5 Soldering Technic	Hand Soldering
2.6 Operating Temper	-25°C ~ +65°C
2.7 Ambient Humidity Used	<85%RH

MODEL CODE

DM 3-01 X-XX-6-0  
1 2 3 4 5 6 7

- 1.Series : DM
- 2.Current Rating : 3=3A 125VAC ; 1.5A 250VAC
- 3.Actuator : 00=non-lever 01-99=Lever
- 4.Termination : see chart (P/C/D/T/N)
- 5.Operating Force : see chart
- 6.Button colour : 6=grey
- 7.Cover type : 0=No two lines



CIRCUIT DIAGRAM

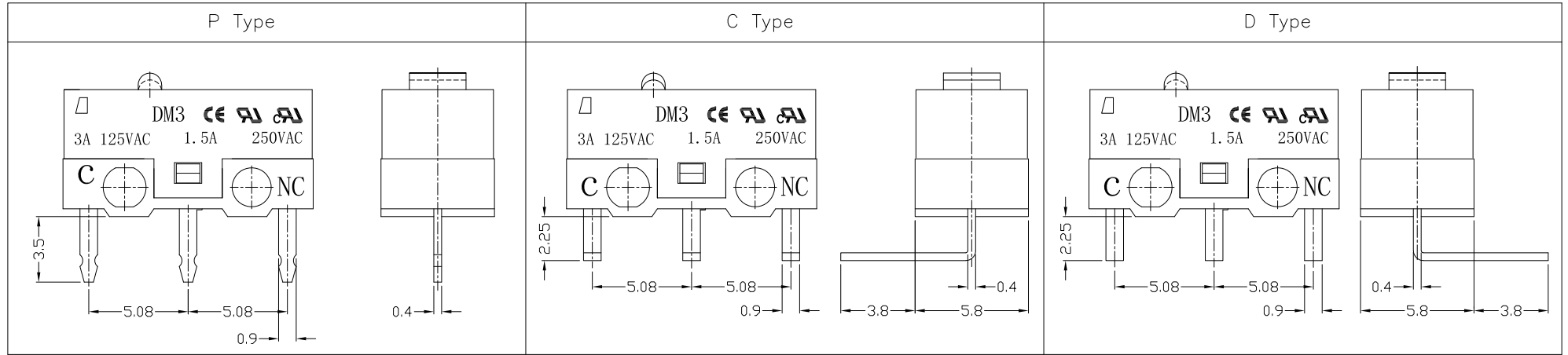
Tolerance:±0.2	UNITS	雅安科技有限公司 ACCURATE INNOTECH INC.			
	mm				
	MAT'L	TITLE:		PART NO.:	
	SEE NOTE	MICRO SWITCH DM SERIES		DM3-01P-XX-6-0	
	FINISH	DR: <i>Ricky</i> 2017/2/20		DWG NO.:	
	SEE NOTE	CHKD: <i>Ricky</i> 2017/2/20		ATD-01X-XX-6-0	
THESE DRAWINGS AND SPECIFICATIONS ARE THE PROPERTY OF ACCURATE INNOTECH INC AND SHALL NOT BE REPRODUCED, COPIED OR USED IN ANY MANNER WITHOUT THE PRIOR WRITTEN CONSENT OF ACCURATE INNOTECH INC.	Q'TY	APPD:		SCALE	SHEET
				1:1	1/2
				REV.	CUSTOMER DRAWING
				A	



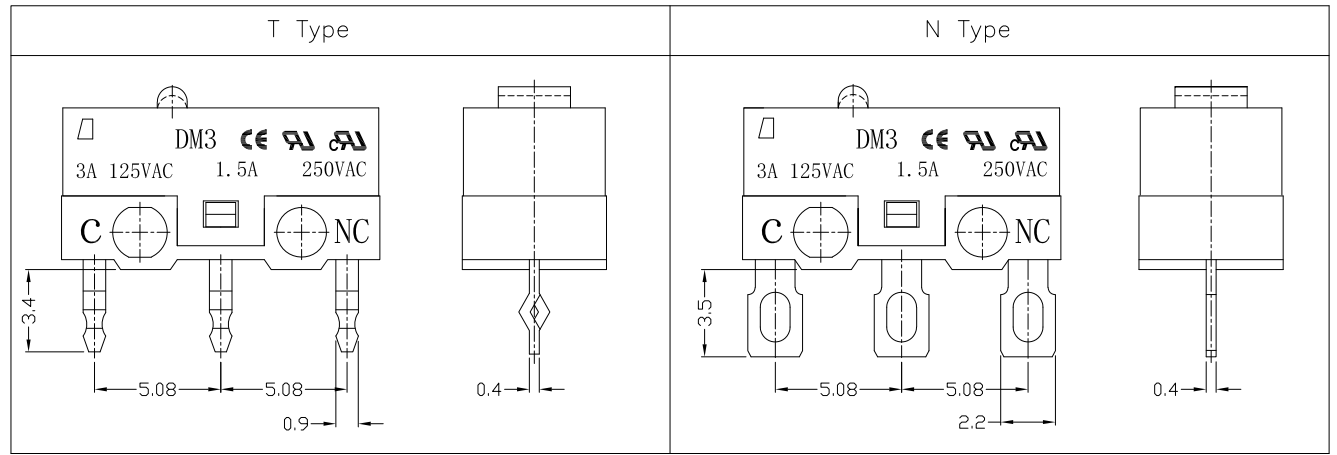
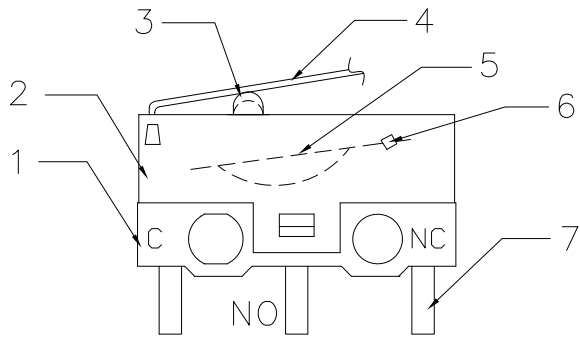
RoHS Compliant  
2002/95/EC

REV.	ECN.	NO.	APPD.

### Terminal Type



### Structure chart



### Material list

NO.	PARTS	MATERIAL	Q'TY	FINISHING	UNITS	mm	雅安科技有限公司 ACCURATE INNOTECH INC.					
8					Tolerance: ±0.2		TITLE: MICRO SWITCH DM SERIES		PART NO.: DM3-01X-XX-6-0			
7	Terminal	C2680	3				DR: Ricky 2017/2/20		DWG NO.: ATD-01X-XX-6-0			
6	Contact	Silver alloy	3				CHKD: Ricky 2017/2/20		SCALE	SHEET	REV.	CUSTOMER
5	Spring Plate	C1720	1				APPD:		1:1	2/2	A	DRAWING
4	Lever	SUS301	1									
3	Button	Nylon	1	GREY								
2	Case	PBT	1	BLACK								
1	Base	PBT	1	WHITE								
					<small>THESE DRAWINGS AND SPECIFICATIONS ARE THE PROPERTY OF ACCURATE INNOTECH INC AND SHALL NOT BE REPRODUCED, COPIED OR USED IN ANY MANNER WITHOUT THE PRIOR WRITTEN CONSENT OF ACCURATE INNOTECH INC.</small>							