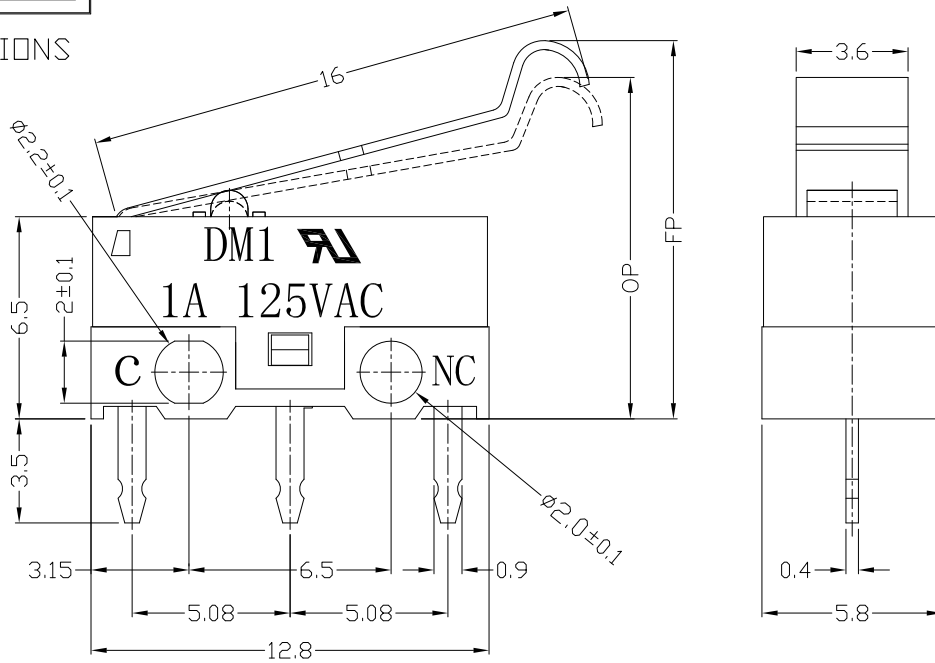




RoHS
Compliant
2002/95/EC

REV.	ECN.	NO.	APPD.

DIMENSIONS



1. Functional spec

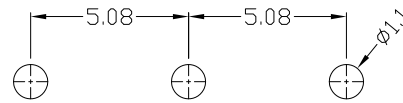
1.1 Rated Voltage	125VAC/DC5V
1.2 Rated Current	1A/30mA
1.3 Contact Resistance	≤100mΩ(Initial value)
1.4 Operating Force	30(20~50gf) 40±20gf
1.5 Bounce Time	
1.6 Free Position	12.8±0.8mm
1.7 Operating Position	10.8±0.8mm
1.8 Position Travel	
1.9 Return Force	

2. Reliable Rating

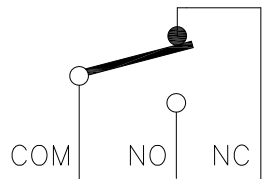
2.1 Mechanical Life	1,000,000 CYCLES
2.2 Electrical Life	10,000 CYCLES
2.3 Insulation Resistance	≥100MΩ DC500V
2.4 Withstand Voltage	AC500V 1 minute
2.5 Soldering Technic	Hand Soldering
2.6 Operating Temper	-25°C ~ +65°C
2.7 Ambient Humidity Used	<85%RH

MODEL CODE

DM 1-02 X-XX-3
1 2 3 4 5 6



P.C.B LAYOUT



CIRCUIT DIAGRAM

- 1.Series : DM
- 2.Current Rating : 1=1A 125VAC ; 30mA DC5V
- 3.Actuator : 00=non-lever 01-99=Lever
- 4.Termination : see chart (P/C/D/T/N)
- 5.Operating Force : see chart
- 6.Button colour : 3=white
- 7.Cover type : No-0=have two lines

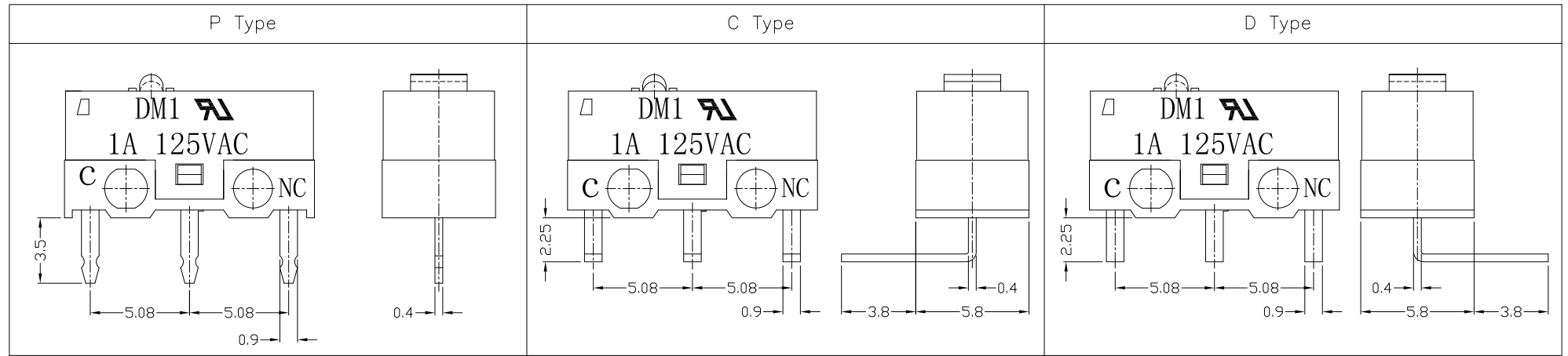
Tolerance:±0.2	UNITS mm	雅安科技有限公司 ACCURATE INNOTECH INC.				
	MAT'L					TITLE:
	SEE NOTE	MICRO SWITCH DM SERIES	DM1-02P-XX-3			
	FINISH	DR: Ricky 2017/2/17	DWG NO.:			
	SEE NOTE	CHKD: Ricky 2017/2/17	ATD-02X-XX-3			
THESE DRAWINGS AND SPECIFICATIONS ARE THE PROPERTY OF ACCURATE INNOTECH INC AND SHALL NOT BE REPRODUCED, COPIED OR USED IN ANY MANNER WITHOUT THE PRIOR WRITTEN CONSENT OF ACCURATE INNOTECH INC.	Q'TY	APPD:	SCALE	SHEET	REV.	CUSTOMER DRAWING
			1:1	1/2	A	



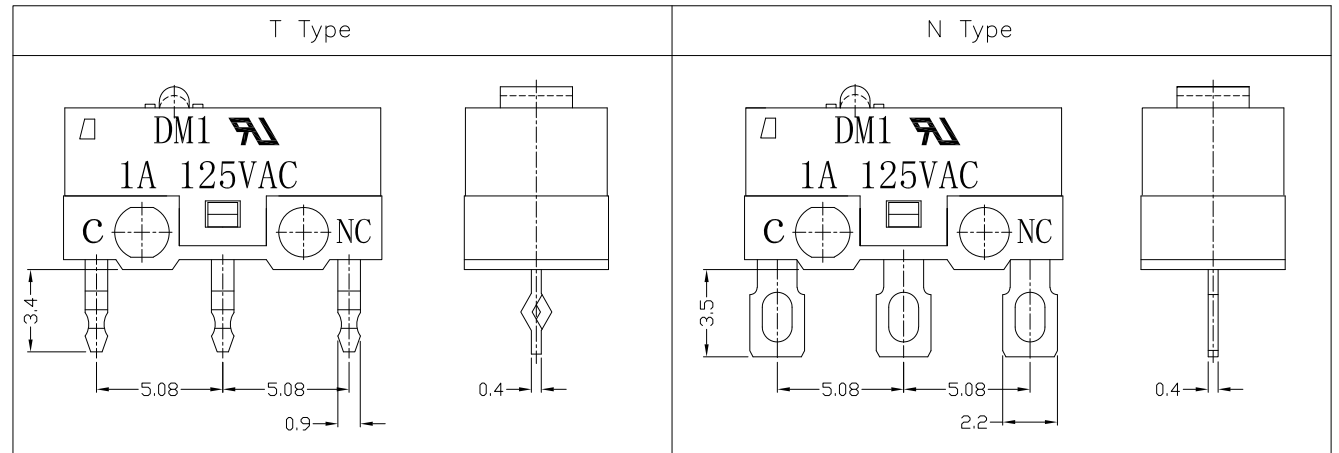
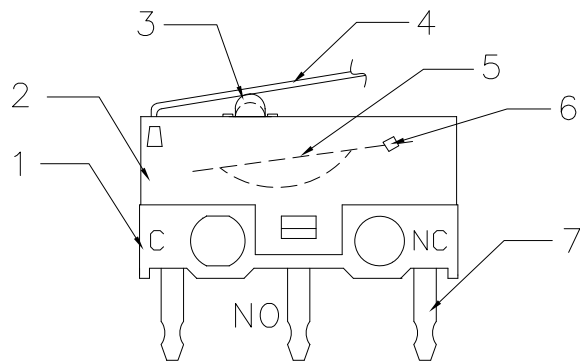
RoHS Compliant
2002/95/EC

REV.	ECN. NO.	NO.	APPD.

Terminal Type



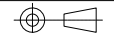
Structure chart



Material list

NO.	PARTS	MATERIAL	Q'TY	FINISHING	UNITS	mm	雅安科技有限公司 ACCURATE INNOTECH INC.			
8					Tolerance: ±0.2		TITLE: MICRO SWITCH DM SERIES		PART NO: DM1-02X-XX-3	
7	Terminal	C2680	3				DR: Ricky 2017/2/17		DWG NO: ATD-02X-XX-3	
6	Contact	Silver alloy	1				CHKD: Ricky 2017/2/17		SCALE: 1:1	
5	Spring Plate	C1720	1				APPD:		SHEET: 2/2	
4	Lever	SUS301	1						REV: A	
3	Button	PBT	1	WHITE					CUSTOMER DRAWING	
2	Case	PBT	1	BLACK						
1	Base	PBT	1	WHITE						

THESE DRAWINGS AND SPECIFICATIONS ARE THE PROPERTY OF ACCURATE INNOTECH INC AND SHALL NOT BE REPRODUCED, COPIED OR USED IN ANY MANNER WITHOUT THE PRIOR WRITTEN CONSENT OF ACCURATE INNOTECH INC.

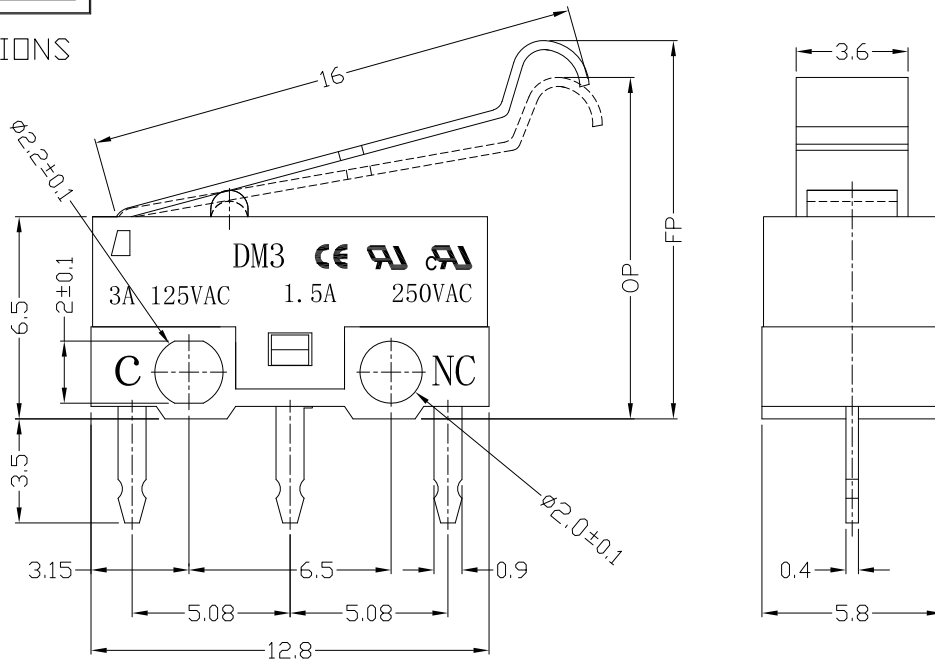




RoHS
Compliant
2002/95/EC

REV.	ECN.	NO.	APPD.

DIMENSIONS



1. Functional spec

1.1 Rated Voltage	125VAC/250VAC
1.2 Rated Current	3A/1.5A
1.3 Contact Resistance	≤100mΩ(Initial value)
1.4 Operating Force	30(20~50gf) 40±20gf
1.5 Bounce Time	
1.6 Free Position	12.8±0.8mm
1.7 Operating Position	10.8±0.8mm
1.8 Position Travel	
1.9 Return Force	

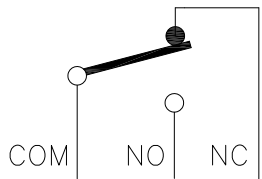
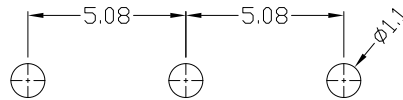
2. Reliable Rating

2.1 Mechanical Life	1,000,000 CYCLES
2.2 Electrical Life	10,000 CYCLES
2.3 Insulation Resistance	≥100MΩ DC500V
2.4 Withstand Voltage	AC500V 1 minute
2.5 Soldering Technic	Hand Soldering
2.6 Operating Temper	-25°C ~ +65°C
2.7 Ambient Humidity Used	<85%RH

MODEL CODE

DM 3-02 X-XX-6-0
1 2 3 4 5 6 7

P.C.B LAYOUT



CIRCUIT DIAGRAM

- 1. Series : DM
- 2. Current Rating : 3=3A 125VAC ; 1.5A 250VAC
- 3. Actuator : 00=non-lever 01-99=Lever
- 4. Termination : see chart (P/C/D/T/N)
- 5. Operating Force : see chart
- 6. Button colour : 6=grey
- 7. Cover type : 0=No two lines

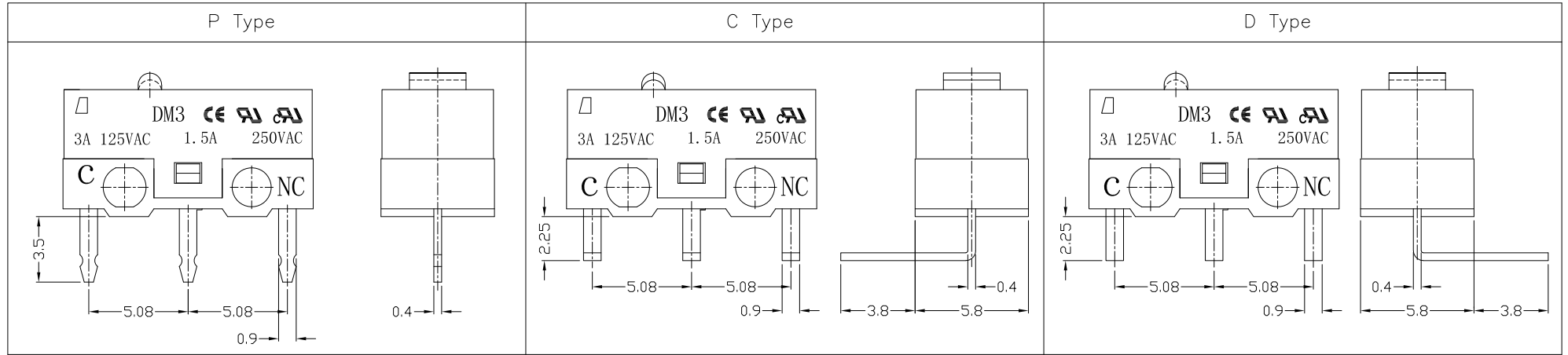
Tolerance: ±0.2	UNITS	雅安科技有限公司			
	mm	ACCURATE INNOTECH INC.			
	MAT'L	TITLE:	PART NO.:		
	SEE NOTE	MICRO SWITCH DM SERIES	DM3-02P-XX-6-0		
	FINISH	DR: Ricky 2017/2/21	DWG NO.:		
	SEE NOTE	CHKD: Ricky 2017/2/21	ATD-02X-XX-6-0		
THESE DRAWINGS AND SPECIFICATIONS ARE THE PROPERTY OF ACCURATE INNOTECH INC AND SHALL NOT BE REPRODUCED, COPIED OR USED IN ANY MANNER WITHOUT THE PRIOR WRITTEN CONSENT OF ACCURATE INNOTECH INC.	Q'TY	APPD:	SCALE	SHEET	REV.
			1:1	1/2	A
			CUSTOMER DRAWING		



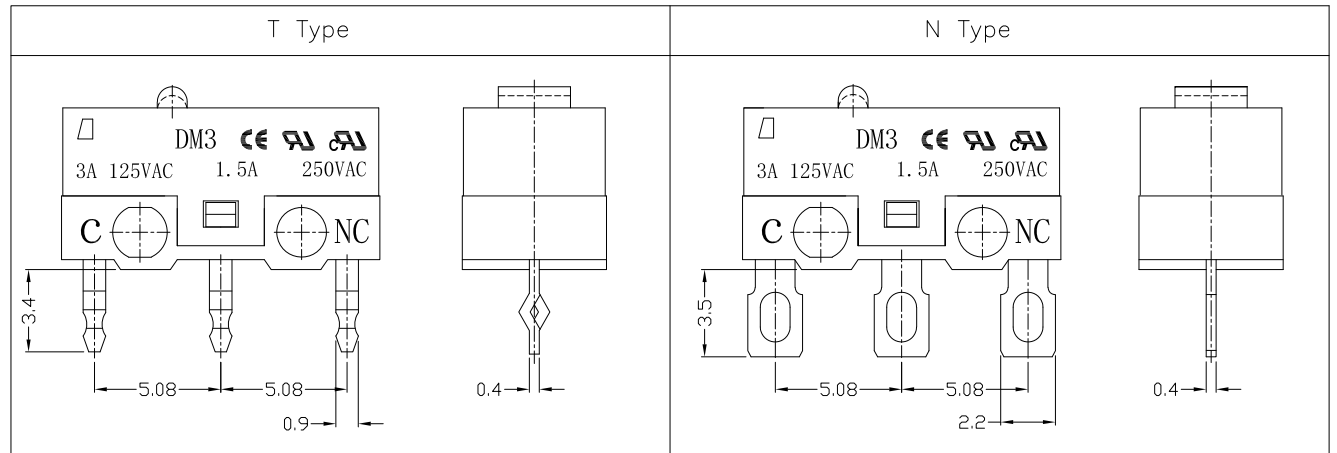
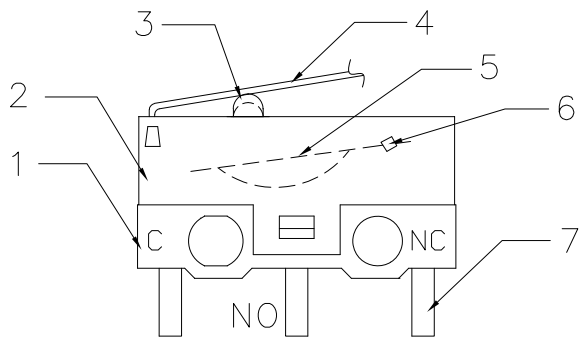
RoHS Compliant
2002/95/EC

REV.	ECN.	NO.	APPD.

Terminal Type



Structure chart



Material list

NO.	PARTS	MATERIAL	Q'TY	FINISHING	UNITS	mm	雅安科技有限公司 ACCURATE INNOTECH INC.					
8					Tolerance:±0.2		TITLE:		PART NO.:			
7	Terminal	C2680	3				MICRO SWITCH DM SERIES		DM3-02X-XX-6-0			
6	Contact	Silver alloy	3				DR: Ricky 2017/2/21		DWG NO.:			
5	Spring Plate	C1720	1				CHKD: Ricky 2017/2/21		ATD-02X-XX-6-0			
4	Lever	SUS301	1				APPD:		SCALE	SHEET	REV.	CUSTOMER
3	Button	Nylon	1	GREY					1:1	2/2	A	DRAWING
2	Case	PBT	1	BLACK								
1	Base	PBT	1	WHITE								

THESE DRAWINGS AND SPECIFICATIONS ARE THE PROPERTY OF ACCURATE INNOTECH INC AND SHALL NOT BE REPRODUCED, COPIED OR USED IN ANY MANNER WITHOUT THE PRIOR WRITTEN CONSENT OF ACCURATE INNOTECH INC.

