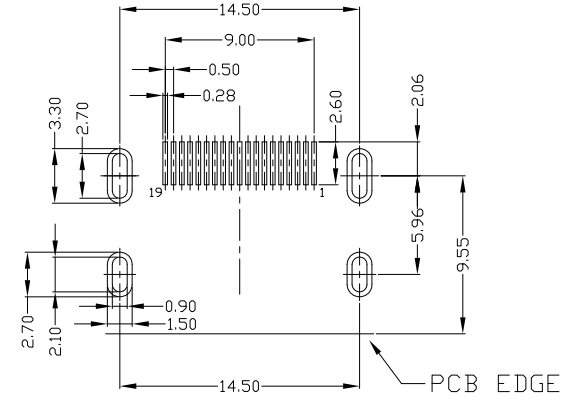
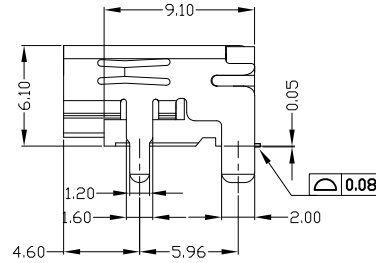
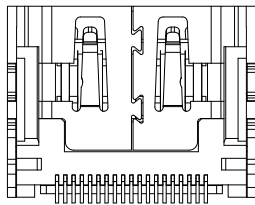
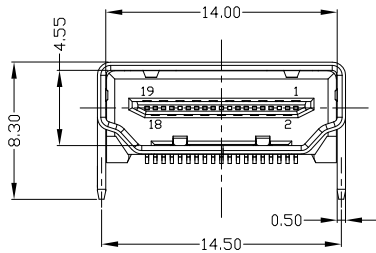
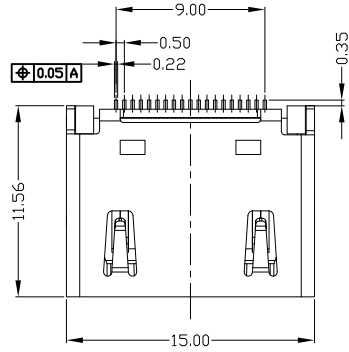




RoHS
Compliant
2002/95/EC

REV.	ECN.	NO.	APPD.



RECOMMENDED PCB LAYOUT (T=1.60mm)

NOTES:

- ELECTRICAL:
 - VOLTAGE CURRENT RATING: 0.5AMP,30V AC;
 - INSULATION RESISTANCE: 100MΩ MIN;
 - CONTACT RESISTANCE: 30mΩ MAX;
 - WITHSTANDING VOLTAGE: 500V AC;
 - OPERATING TEMPERATURE:-55°C TO +105°C.
- Mechanical:
 - Mating Force: 35N MAX
 - Unmating Force: 10N MIN.
- DIMENSIONS MARKED "▼" TO BE CHECKED BY Q.C & IPQC.
- PART NO.

HMAF-191N-4BHS40

N:Ni
G:Au
1:Au 1U"
5:Au 15U"

Bill of materials:

NO	PARTS	MATERIAL	QTY	FINISHING	UNITS	MAT'L	FINISH	Q'TY	DR:	CHKD:	APPD:	TITLE:	PART NO.:	DWG NO.:	SCALE	SHEET	REV.	CUSTOMER DRAWING	
3	HOUSING	LCP+30%GF	1	UL94V-0	X. ±0.35	X.' ±2'	SEE NOTE	SEE NOTE	gan	2017/07/2	gan	HDMI AF 19PIN SMT 铜壳镀镍DIP 脚无凸点 L=9.10	HMAF-191N-4BHS40	AII-HS40	1:1	1/1	B		
2	SHELL	COPPER ALLOY	1	PLATED NICKEL	.XX ±0.25	.XX'	SEE NOTE	SEE NOTE	gan	2017/07/2	gan								
1	TERMINAL	COPPER ALLOY	19	PLATED GOLD/TIN	.XXX ±0.15	.XXX'	SEE NOTE	SEE NOTE	gan	2017/07/2	gan								
<small>THESE DRAWINGS AND SPECIFICATIONS ARE THE PROPERTY OF ACCURATE INNOTECH INC AND SHALL NOT BE REPRODUCED, COPIED OR USED IN ANY MANNER WITHOUT THE PRIOR WRITTEN CONSENT OF ACCURATE INNOTECH INC.</small>																			