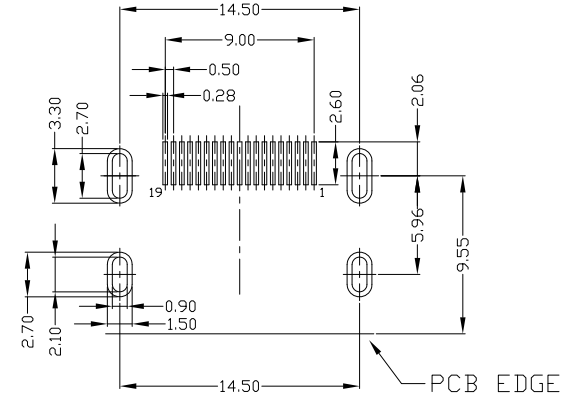
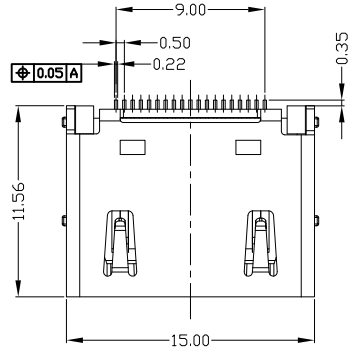


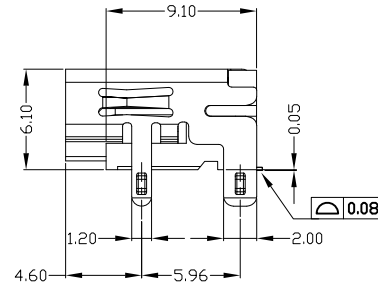
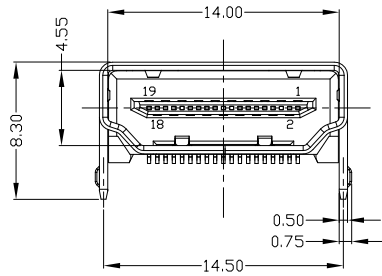


RoHS
Compliant
2002/95/EC

REV.	ECN.	NO.	APPD.



RECOMMENDED PCB LAYOUT (T=1.60mm)



NOTES:

- ELECTRICAL:
 - VOLTAGE CURRENT RATING: 0.5AMP,30V AC;
 - INSULATION RESISTANCE: 100MΩ MIN;
 - CONTACT RESISTANCE: 30mΩ MAX;
 - WITHSTANDING VOLTAGE: 500V AC;
 - OPERATING TEMPERATURE:-55°C TO +105°C.
- Mechanical:
 - Mating Force: 35N MAX
 - Unmating Force: 10N MIN.
- DIMENSIONS MARKED "▼" TO BE CHECKED BY Q.C & IPQC.
- PART NO.

HMAF-191N-4BHS41

N: Ni
G: Au
1: Au 1U"
5: Au 15U"

Bill of materials:

NO	PARTS	MATERIAL	QTY	FINISHING	UNITS	DR	SCALE	SHEET	REV.	CUSTOMER DRAWING				
3	HOUSING	LCP+30%GF	1	UL94V-0	X. ±0.35	X.' ±2'	mm	雅安科技有限公司 ACCURATE INNOTECH INC. TITLE: HDMI AF 19PIN SMT 铜壳镀镍DIP 脚带凸点 L=9.10 PART NO.: HMAF-191N-4BHS41 DWG NO.: AII-HS41 DR: gan 2017/07/2 CHKD: gan 2017/07/2 APPD:						
2	SHELL	COPPER ALLOY	1	PLATED NICKEL	.X ±0.3	.X' ±1'	MAT'L					1:1	1/1	B
1	TERMINAL	COPPER ALLOY	19	PLATED GOLD/TIN	.XX ±0.25	.XX'	SEE NOTE					1:1	1/1	B
					.XXX ±0.15	.XXX'	FINISH					1:1	1/1	B
					THESE DRAWINGS AND SPECIFICATIONS ARE THE PROPERTY OF ACCURATE INNOTECH INC AND SHALL NOT BE REPRODUCED, COPIED OR USED IN ANY MANNER WITHOUT THE PRIOR WRITTEN CONSENT OF ACCURATE INNOTECH INC.		Q'TY							