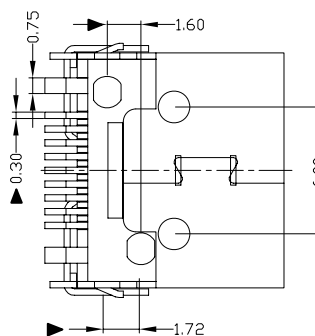
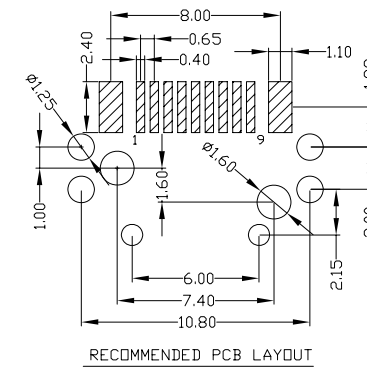
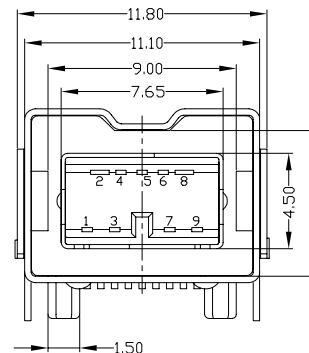
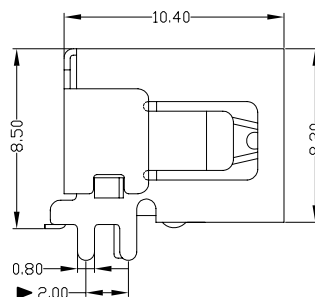
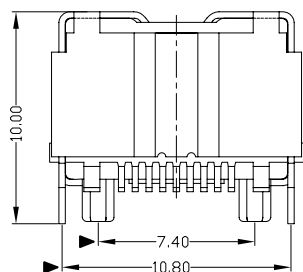
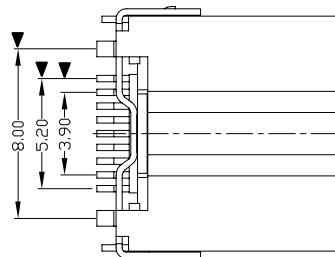




RoHS
Compliant
2002/95/EC

REV.	ECN. NO.	APPD.



NOTES:

- ELECTRICAL:
 - VOLTAGE CURRENT RATING: 1AMP,30V AC;
 - INSULATION RESISTANCE: 100MΩ MIN;
 - CONTACT RESISTANCE: 50mΩ MAX;
 - WITHSTANDING VOLTAGE: 300V AC;
 - OPERATING TEMPERATURE:-55°C TO +85°C.
- Mechanical:
 - Mating Force: 30N MAX
 - Unmating Force: 7N MIN.
- DIMENSIONS MARKED "▼" TO BE CHECKED BY Q.C & IPQC.

4.PART NO.

IENF-092N-4BH81

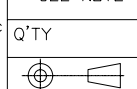
2Au 3U'

W:WHITE
B:BLACK
1:PBT
2:PA6T
3:PA9T
4:LCP

Bill of materials:

NO	PARTS	MATERIAL	QTY	FINISHING	X. ±0.35	X.' ±2°	UNITS
4	HOUSING	LCP	1	UL94V-0	.X ±0.35	X.' ±2°	mm
3	OUTSIDE SHELL	COPPER ALLOY	1	PLATED NICKEL	.X ±0.3	.X' ±1°	MAT'L
2	INNER SHELL	COPPER ALLOY	1	PLATED NICKEL	.XX ±0.25	.XX'	SEE NOTE
1	TERMINAL	COPPER ALLOY	9	PLATED GOLD	.XXX ±0.15	.XXX'	FINISH
							SEE NOTE
							Q'TY

THESE DRAWINGS AND SPECIFICATIONS ARE THE PROPERTY OF ACCURATE INNOTECH INC AND SHALL NOT BE REPRODUCED, COPIED OR USED IN ANY MANNER WITHOUT THE PRIOR WRITTEN CONSENT OF ACCURATE INNOTECH INC.



雅安科技有限公司
ACCURATE INNOTECH INC.

TITLE: IEEE 1394 9P/F SMT(斜脚)	PART NO.: IENF-092N-4BH81
DR: gan 2012/07/02	DWG NO.: AII-H81
CHKD: gan 2012/07/02	SCALE SHEET REV. 1:1 1/1 B
APPD:	CUSTOMER DRAWING