



RoHS  
Compliant  
2002/95/EC

REV.	ECN.	NO.	APPD.

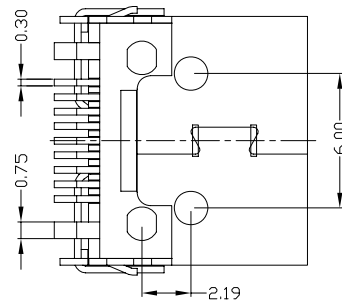
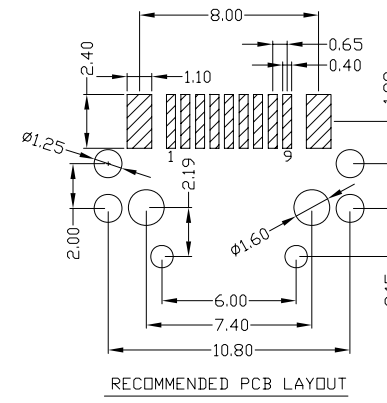
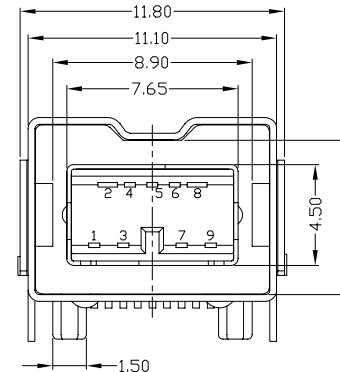
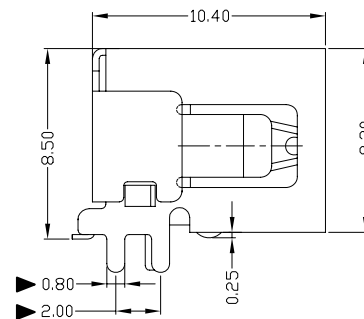
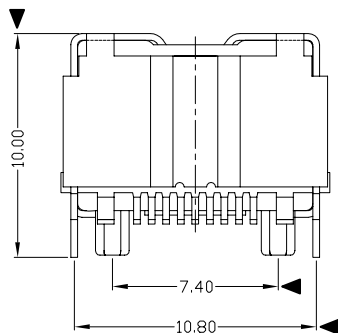
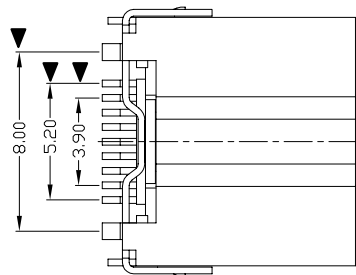
A

B

C

D

E



NOTES:

- ELECTRICAL:
  - VOLTAGE CURRENT RATING: 1AMP,30V AC;
  - INSULATION RESISTANCE: 100MΩ MIN;
  - CONTACT RESISTANCE: 50mΩ MAX;
  - WITHSTANDING VOLTAGE: 300V AC;
  - OPERATING TEMPERATURE:-55°C TO +85°C.
- Mechanical:
  - Mating Force: 30N MAX
  - Unmating Force: 7N MIN.
- DIMENSIONS MARKED "▼" TO BE CHECKED BY Q.C & IPQC.

4.PART NO.

IENF-092N-4BH82

2Au 3U\*

W:WHITE  
B:BLACK  
1:PBT  
2:PA6T  
3:PA9T  
4:LCP

Bill of materials:

NO	PARTS	MATERIAL	QTY	FINISHING	X. ±0.35	X.* ±2*	UNITS	mm	雅安科技有限公司 ACCURATE INNOTECH INC.			
4	HOUSING	LCP	1	UL94V-0	.X ±0.3	.X* ±1*	MAT'L		TITLE: IEEE 1394 9P/F SMT(平脚)		PART NO.: IENF-092N-4BH82	
3	OUTSIDE SHELL	COPPER ALLOY	1	PLATED NICKEL	.XX ±0.25	.XX*	SEE NOTE		DR: gan 2012/07/02		DWG NO.: AII-H82	
2	INNER SHELL	COPPER ALLOY	1	PLATED NICKEL	.XXX ±0.15	.XXX*	FINISH		CHKD: gan 2012/07/02		SCALE SHEET REV. CUSTOMER 1:1 1/1 B DRAWING	
1	TERMINAL	COPPER ALLOY	9	PLATED GOLD	THESE DRAWINGS AND SPECIFICATIONS ARE THE PROPERTY OF ACCURATE INNOTECH INC AND SHALL NOT BE REPRODUCED, COPIED OR USED IN ANY MANNER WITHOUT THE PRIOR WRITTEN CONSENT OF ACCURATE INNOTECH INC.			Q'TY	APPD:			

