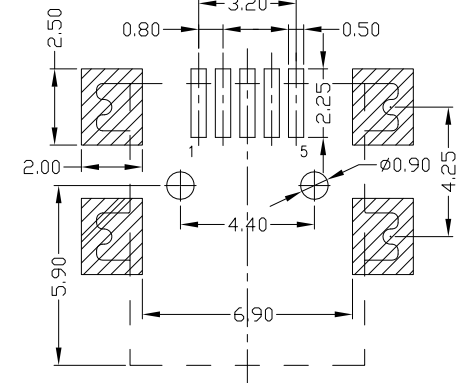
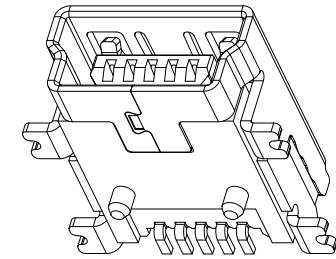
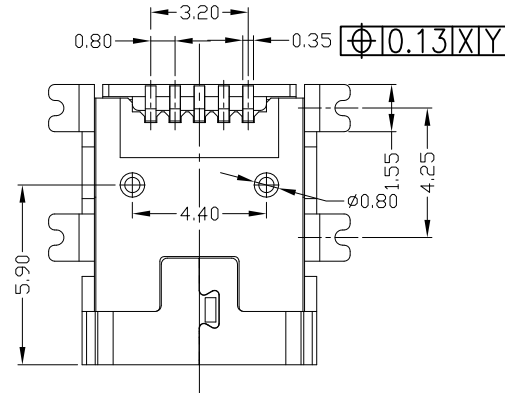
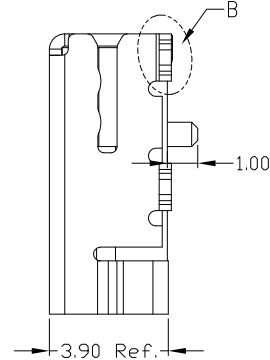
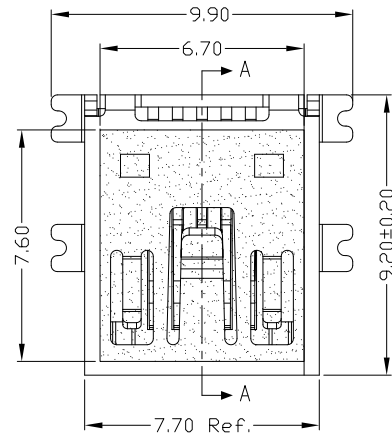


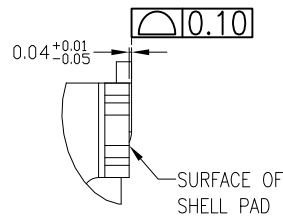
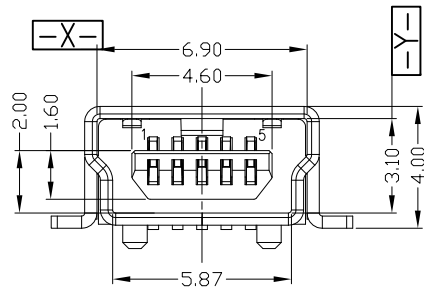


RoHS
Compliant
2002/95/EC

| REV | LTR | DESCRIPTION | DATE | REVISER | APPD |
|-----|-----|-------------|------|---------|------|
| | | | | | |



RECOMMENDED P.C.B LAYOUT



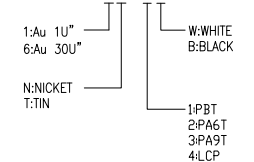
DETAIL B
(2:1)

NOTES:

- ELECTRICAL:
 - VOLTAGE CURRENT RATING: 1.0AMP,30V AC;
 - INSULATION RESISTANCE: 100MΩ MIN;
 - CONTACT RESISTANCE: 50mΩ MAX;
 - WITHSTANDING VOLTAGE: 300V AC;
 - OPERATING TEMPERATURE: -25°C TO +85°C.
- Mechanical:
 - Mating Force: 35N MAX
 - Unmating Force: 7N MIN.
- DIMENSIONS MARKED "▼" TO BE CHECKED BY Q.C & IPQC.

4. PART NO.

MUBF-05*N-4BHUA152-M



Bill of materials:

| NO | PARTS | MATERIAL | QTY | FINISHING | | | | | | | | | | | |
|----|----------|--------------|-----|-------------------|------------|-------|----------|----|--|--|--|-------|-------|------|----------|
| 5 | | | | | .X ±0.15 | Ang1° | UNITS | mm | 雅安科技有限公司 ACCURATE INNOTECH INC. TITLE: MINI USB 5P F SMT B Type 4.25有柱(Post=1.0H)贴麦拉 PART NO.: MUBF-05XN-4BHUA152-M DWG NO.: AII-HUA152 DR: <i>Ricky</i> 2017/10/11 CHKD: <i>Ricky</i> 2017/10/11 APPD: | | | | | | |
| 4 | | | | .XX ±0.10 | | MAT'L | | | | | | | | | |
| 3 | SHELL | COPPER ALLOY | 1 | PLATED TIN/NICKEL | .XXX ±0.05 | | SEE NOTE | | | | | | | | |
| 2 | HOUSING | LCP+30%GF | 1 | UL94V-0 | | | SEE NOTE | | | | | | | | |
| 1 | TERMINAL | COPPER ALLOY | 5 | PLATED GOLD/TIN | | | Q'TY | | | | | SCALE | SHEET | REV. | CUSTOMER |
| | | | | | | | | | | | | 4:1 | 1/1 | B | DRAWING |

THESE DRAWINGS AND SPECIFICATIONS ARE THE PROPERTY OF ACCURATE INNOTECH INC. AND SHALL NOT BE REPRODUCED, COPIED OR USED IN ANY MANNER WITHOUT THE PRIOR WRITTEN CONSENT OF ACCURATE INNOTECH INC.