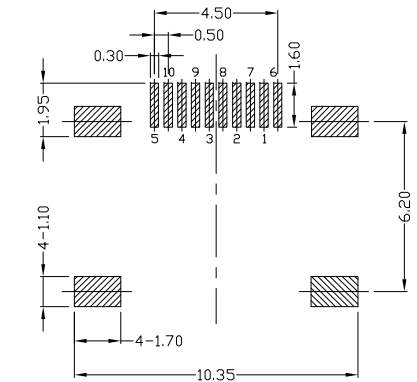
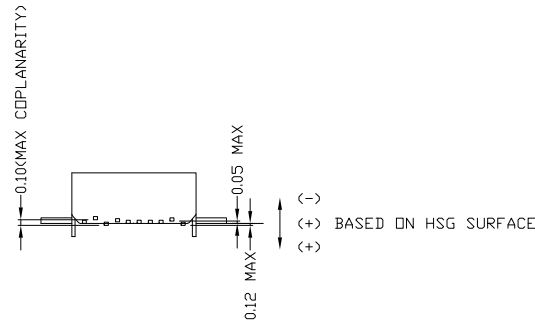
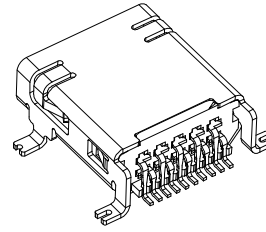
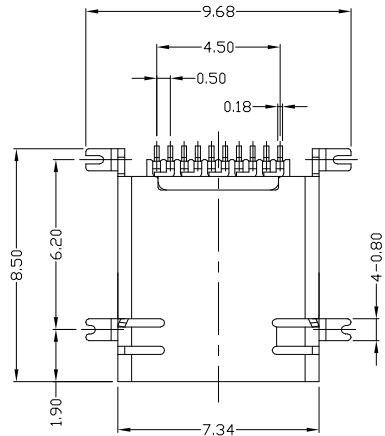




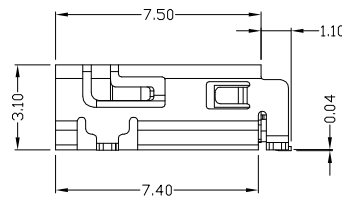
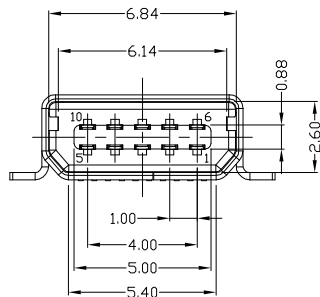
RoHS
Compliant
2002/95/EC

REV.	ECN. NO.	APPD.



RECOMMENDED PCB LAYOUT(TOP SIDE)

TOLERANCE=±0.05



NOTES:

- ELECTRICAL:
 - VOLTAGE CURRENT RATING: 1.0AMP,100V AC;
 - INSULATION RESISTANCE: 100MΩ MIN;
 - CONTACT RESISTANCE: 50mΩ MAX;
 - WITHSTANDING VOLTAGE: 100V AC;
 - OPERATING TEMPERATURE:-30°C TO +80°C.
- Mechanical:
 - Mating Force: 35N MAX
 - Unmating Force: 7N MIN.
- DIMENSIONS MARKED "▼" TO BE CHECKED BY Q.C & IPQC.

4.PART NO.

MUNF-101T-4BVS40

1:Au 1U"
6:Au 30U"

W:WHITE
B:BLACK
1:PBT
2:PA6T
3:PA9T
4:LCP

Bill of materials:

E	3	HOUSING	LCP+30%GF	1	UL94V-0	X. ±0.35	X.' ±2'	UNITS	mm	雅安科技有限公司 ACCURATE INNOTECH INC.				
	2	SHELL	COPPER ALLOY	1	PLATED TIN	.X ±0.3	.X' ±1'	MAT'L	SEE NOTE		TITLE:	PART NO.:		
1	TERMINAL	COPPER ALLOY		10	PLATED GOLD/TIN	.XX ±0.25	.XX'	FINISH	SEE NOTE		MINI USB 10PIN FEMALE SMT TYPE	MUNF-101T-4BVS40		
NO	PARTS	MATERIAL		QTY	FINISHING	.XXX ±0.15	.XXX'	Q'TY	SEE NOTE		DR: gan 2018/07/12	DWG NO.:	AII-VS40	
<small>THESE DRAWINGS AND SPECIFICATIONS ARE THE PROPERTY OF ACCURATE INNOTECH INC AND SHALL NOT BE REPRODUCED, COPIED OR USED IN ANY MANNER WITHOUT THE PRIOR WRITTEN CONSENT OF ACCURATE INNOTECH INC.</small>										CHKD: gan 2018/07/12	SCALE	SHEET	REV.	CUSTOMER
										APPD:	1:1	1/1	B	DRAWING