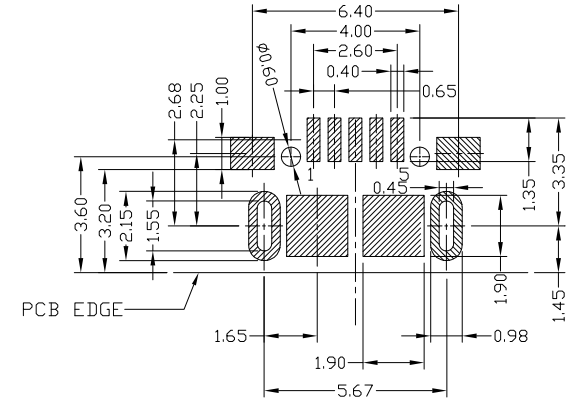
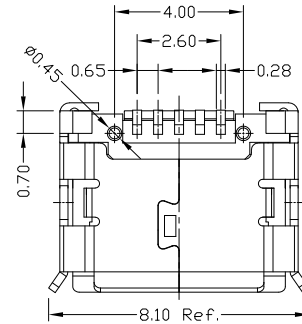
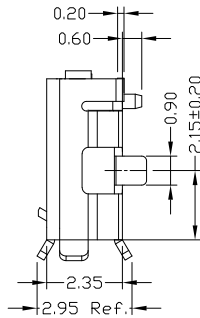
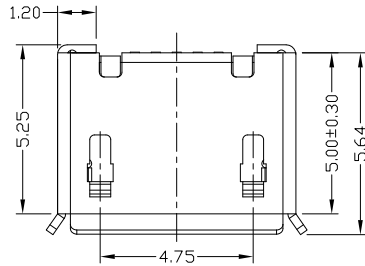
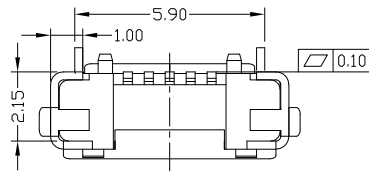




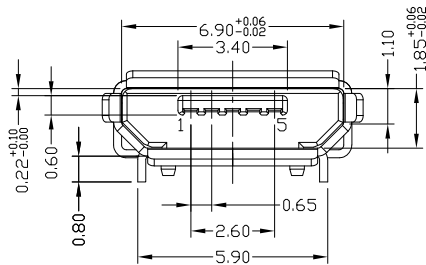
RoHS  
Compliant  
2002/95/EC

Halogen Free

REV.	ECN. NO.	APPD.



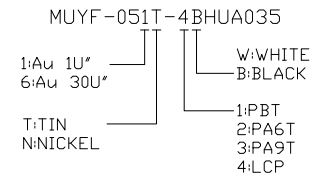
RECOMMENDED PCB LAYOUT



NOTES:

- ELECTRICAL:
  - VOLTAGE CURRENT RATING: PIN1&5 1.8AMP MAX / PIN2&3&4 1AMP MAX. ,30V AC;
  - INSULATION RESISTANCE: 100MΩ MIN;
  - CONTACT RESISTANCE: 30mΩ MAX;
  - WITHSTANDING VOLTAGE: 100V AC; FOR 1 MIN.
  - OPERATING TEMPERATURE: -30°C TO +80°C.
- Mechanical:
  - Mating Force: 35N MAX
  - Unmating Force: 10N MIN.
- DIMENSIONS MARKED "▼" TO BE CHECKED BY Q.C & IPQC.

4.PART NO.



Bill of materials:

NO	PARTS	MATERIAL	QTY	FINISHING	UNITS	mm	TITLE:	PART NO.:
3	SHELL	COPPER ALLOY / STAINLESS STEEL	1	PLATED TIN	.X	±0.15	MICRO USB B TYPE F 5P 有焊脚 插板5.9脚长0.8有柱	MUYF-05XT-4BHUA037
2	HOUSING	LCP+30%GF	1	UL94V-0	.XX	±0.10	DR: <i>Ricky</i> 2022/09/23	DWG NO.:
1	TERMINAL	COPPER ALLOY	5	PLATED GOLD	.XXX	±0.05	CHKD: <i>Ricky</i> 2022/09/23	AII-HUA037
NO	PARTS	MATERIAL	QTY	FINISHING	THESE DRAWINGS AND SPECIFICATIONS ARE THE PROPERTY OF ACCURATE INNOTECH INC AND SHALL NOT BE REPRODUCED, COPIED OR USED IN ANY MANNER WITHOUT THE PRIOR WRITTEN CONSENT OF ACCURATE INNOTECH INC		APPD:	SCALE SHEET REV. CUSTOMER DRAWING

雅安科技有限公司  
ACCURATE INNOTECH INC.

SCALE: 5:1 SHEET: 1/1 REV: A CUSTOMER DRAWING