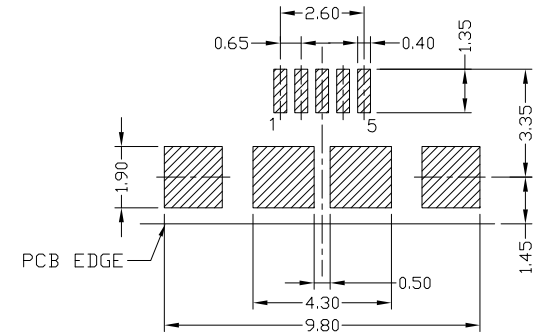
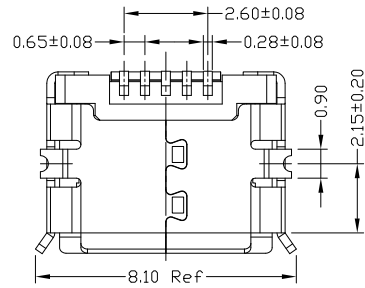
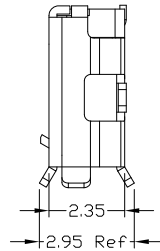
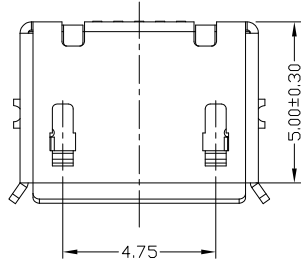
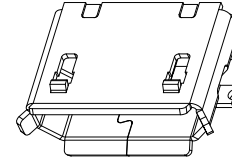
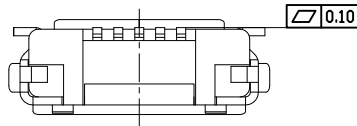




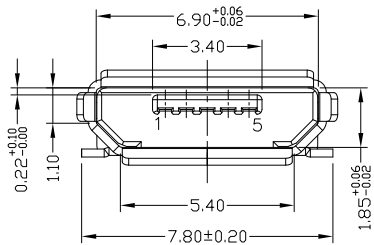
RoHS
Compliant
2002/95/EC

Halogen Free

| REV. | ECN. NO. | APPD. |
|------|----------|-------|
| | | |
| | | |



RECOMMENDED PCB LAYOUT



NOTES:

1.ELECTRICAL:

- 1)VOLTAGE CURRENT RATING:PIN1&5 1.8AMP MAX / PIN2&3&4 1AMP MAX. ,30V AC;
- 2)INSULATION RESISTANCE: 100MΩ MIN;
- 3)CONTACT RESISTANCE: 30mΩ MAX;
- 4)WITHSTANDING VOLTAGE: 100V AC; FOR 1 MIN.
- 5)OPERATING TEMPERATURE:-30°C TO +80°C.

2.Mechanical:

- 1)Mating Force: 35N MAX
 - 2)Unmating Force: 10N MIN.
- 3.DIMENSIONS MARKED "▼" TO BE CHECKED BY Q.C & IPQC.

4.PART NO.

MUYF-05*T-4BHUA141

- 1:Au 1U*
6:Au 30U*
T:TIN
N:NICKEL
- W:WHITE
B:BLACK
1:PBT
2:PA6T
3:PA9T
4:LCP

Bill of materials:

| NO | PARTS | MATERIAL | QTY | FINISHING | UNITS | mm | TITLE: | PART NO.: |
|----|----------|--------------|-----|-------------|--|---------|-----------------------|--------------------|
| 3 | SHELL | COPPER ALLOY | 1 | PLATED TIN | X. ±0.35 | X.* ±2* | MICRO USB B TYPE F 5P | MUYF-05*T-4BHUA141 |
| 2 | HOUSING | LCP+30%GF | 1 | UL94V-0 | .X ±0.30 | .X* ±1* | SMT 无柱短针 | AII-HUA141 |
| 1 | TERMINAL | COPPER ALLOY | 5 | PLATED GOLD | .XX ±0.25 | .XX* | DR: Ricky 2018/5/8 | DWG NO.: |
| | | | | | .XXX ±0.15 | .XXX* | CHKD: Ricky 2018/5/8 | SCALE |
| | | | | | THESE DRAWINGS AND SPECIFICATIONS ARE THE PROPERTY OF ACCURATE INNOTECH AND SHALL NOT BE REPRODUCED, COPIED OR USED IN ANY MANNER WITHOUT THE PRIOR WRITTEN CONSENT OF ACCURATE INNOTECH INC | | APPD: | SHEET |
| | | | | | | | | REV. |
| | | | | | | | | CUSTOMER DRAWING |

雅安科技有限公司
ACCURATE INNOTECH INC.

5:1 1/1 A