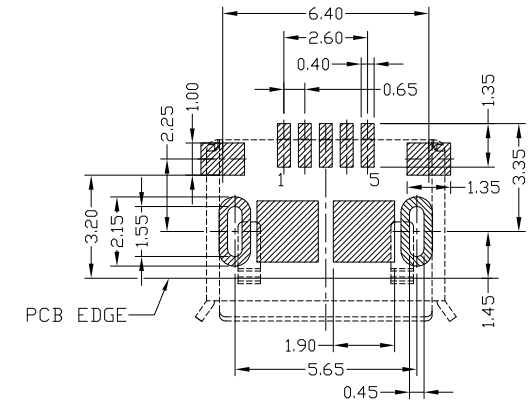
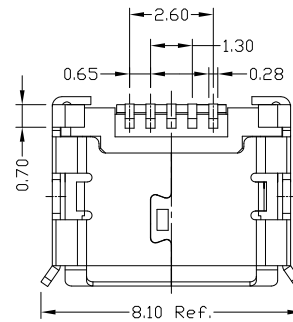
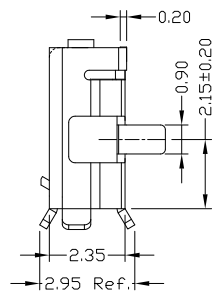
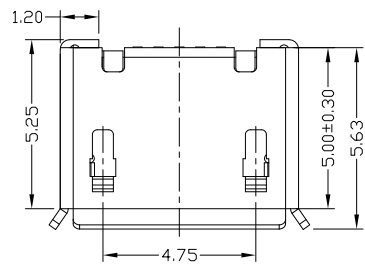
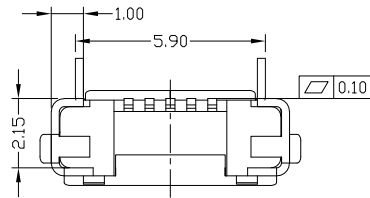




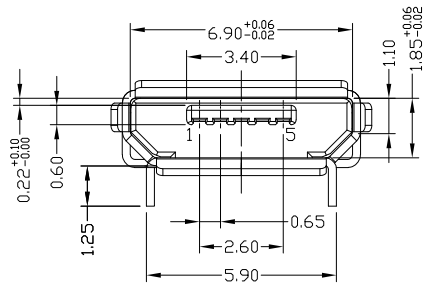
RoHS
Compliant
2002/95/EC

Halogen Free

REV.	ECN. NO.	APPD.



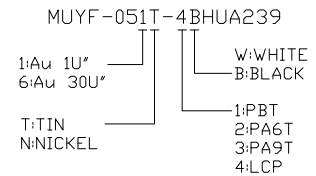
RECOMMENDED PCB LAYOUT



NOTES:

- ELECTRICAL:
 - VOLTAGE CURRENT RATING: PIN1&5 1.8AMP MAX / PIN2&3&4 1AMP MAX. ,30V AC;
 - INSULATION RESISTANCE: 100MΩ MIN;
 - CONTACT RESISTANCE: 30mΩ MAX;
 - WITHSTANDING VOLTAGE: 100V AC; FOR 1 MIN.
 - OPERATING TEMPERATURE: -30°C TO +80°C.
- Mechanical:
 - Mating Force: 35N MAX
 - Unmating Force: 10N MIN.
- DIMENSIONS MARKED "▼" TO BE CHECKED BY Q.C & IPQC.

4.PART NO.



Bill of materials:

NO	PARTS	MATERIAL	QTY	FINISHING	UNITS	mm	TITLE:	PART NO.:
3	SHELL	COPPER ALLOY	1	PLATED TIN	.X	±0.15	雅安科技有限公司 ACCURATE INNOTECH INC.	MUYF-05XT-4BHUA239
2	HOUSING	LCP+30%GF	1	UL94V-0	.XX	±0.10	MICRO USB B TYPE F 5P 有焊脚 插板5.9脚长1.25无柱	MUYF-05XT-4BHUA239
1	TERMINAL	COPPER ALLOY	5	PLATED GOLD	.XXX	±0.05	DR: Ricky 2022/09/23	AWG NO.:
							CHKD: Ricky 2022/09/23	AII-HUA239
							APPD:	SCALE SHEET REV. CUSTOMER DRAWING
								5:1 1/1 A

THESE DRAWINGS AND SPECIFICATIONS ARE THE PROPERTY OF ACCURATE INNOTECH AND SHALL NOT BE REPRODUCED, COPIED OR USED IN ANY MANNER WITHOUT THE PRIOR WRITTEN CONSENT OF ACCURATE INNOTECH INC

