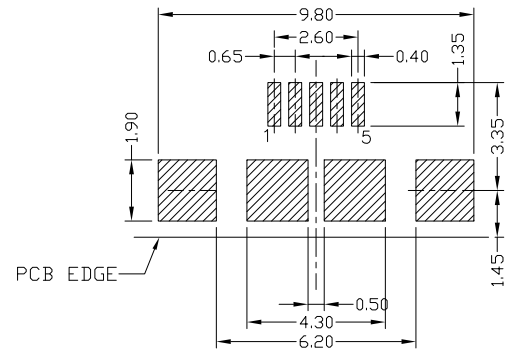
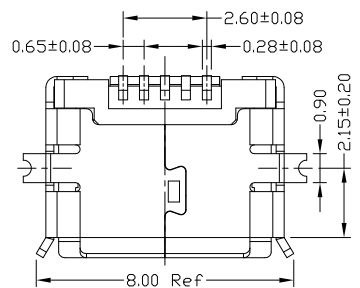
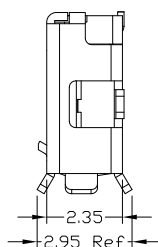
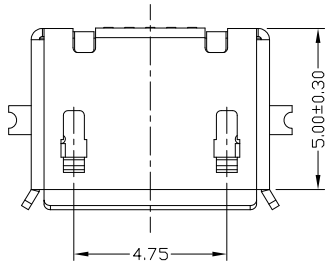
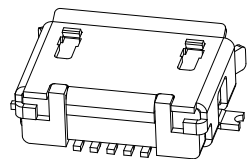
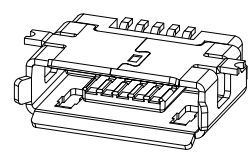
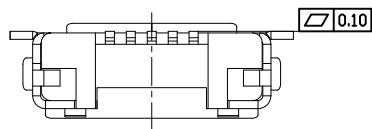
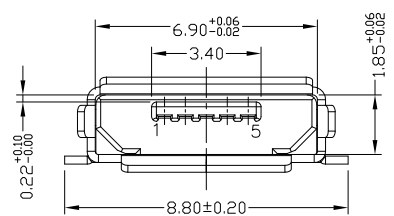

**RoHS Compliant**  
 Process Capable 2002/95/EC  
**Halogen Free**

REV.	ECN. NO.	APPD.



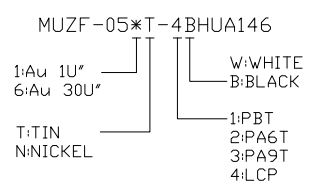
**RECOMMENDED PCB LAYOUT**



**NOTES:**

- 1.ELECTRICAL:**
  - 1)VOLTAGE CURRENT RATING: PIN1&5 1.8AMP MAX / PIN2&3&4 1AMP MAX. ,30V AC;
  - 2)INSULATION RESISTANCE: 100MΩ MIN;
  - 3)CONTACT RESISTANCE: 30mΩ MAX;
  - 4)WITHSTANDING VOLTAGE: 100V AC; FOR 1 MIN.
  - 5)OPERATING TEMPERATURE: -30°C TO +80°C.
- 2.Mechanical:**
  - 1)Mating Force: 35N MAX
  - 2)Unmating Force: 10N MIN.
- 3.DIMENSIONS MARKED "▼" TO BE CHECKED BY Q.C & IPQC.**

**4.PART NO.**



**Bill of materials:**

3	SHELL	COPPER ALLOY	1	PLATED TIN	X. ±0.35	X.' ±2'	UNITS	mm
2	HOUSING	LCP+30%.GF	1	UL94V-0	.X ±0.30	.X' ±1'	MAT'L	SEE NOTE
1	TERMINAL	COPPER ALLOY	5	PLATED GOLD	.XX ±0.25	.XX'	FINISH	SEE NOTE
NO	PARTS	MATERIAL	QTY	FINISHING	.XXX ±0.15	.XXX'	Q'TY	SEE NOTE

THESE DRAWINGS AND SPECIFICATIONS ARE THE PROPERTY OF ACCURATE INNOTECH INC. AND SHALL NOT BE REPRODUCED, COPIED OR USED IN ANY MANNER WITHOUT THE PRIOR WRITTEN CONSENT OF ACCURATE INNOTECH INC.

**雅安科技有限公司**  
**ACCURATE INNOTECH INC.**

TITLE: MICRO USB AB TYPE F 5P SMT 无脚柱	PART NO.: MUZF-05*T-4BHUA146
DR: <i>Ricky</i> 2018/5/7	DWG NO.: AII-HUA146
CHKD: <i>Ricky</i> 2018/5/7	SCALE SHEET REV. CUSTOMER DRAWING
APPD:	5:1 1/1 A

