

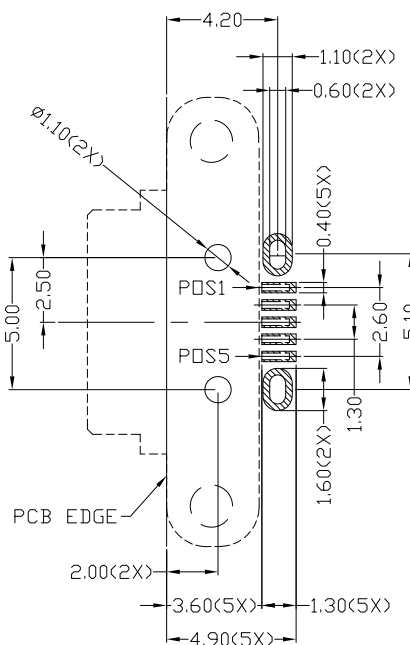
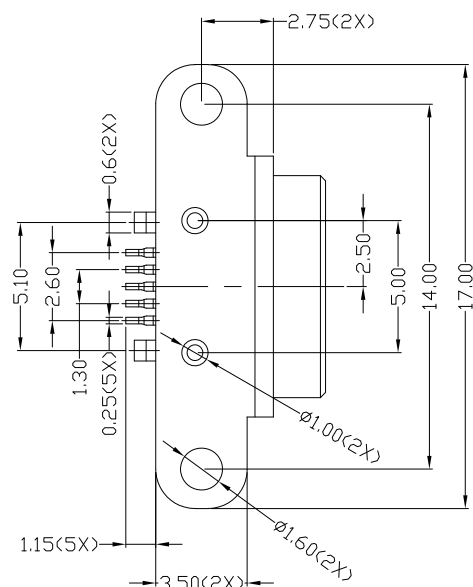
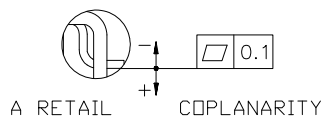
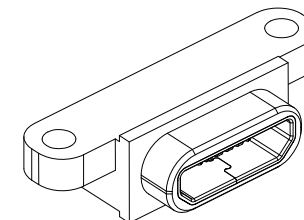
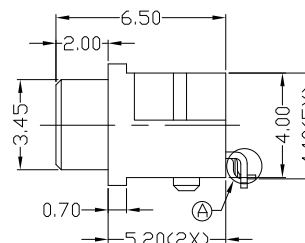
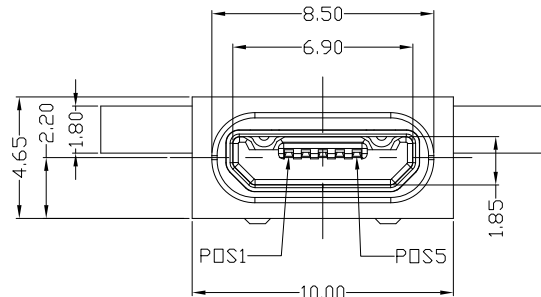
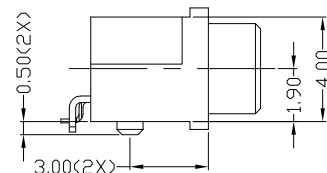


RoHS Compliant  
2002/95/EC



Halogen Free

| REV. | ECN. NO. | APPD. |
|------|----------|-------|
|      |          |       |
|      |          |       |



RECOMMENDED PCB LAYOUT

TOP VIEW

NOTES :

1. ELECTRICAL :

- VOLTAGE CURRENT RATING: PIN 1,5:1.8A/30V AC Max.; PIN 2,3,4:0.5A/30V AC Max.
- INSULATION RESISTANCE: 100MΩ MIN;
- CONTACT RESISTANCE: 30mΩ MAX;
- WITHSTANDING VOLTAGE: 300V AC;
- OPERATING TEMPERATURE:-25°C TO +85°C.

2. Mechanical :

- Mating Force: 35N MAX
- Unmating Force: 8N MIN.

3. DIMENSIONS MARKED "▼" TO BE CHECKED BY Q.C & IPQC.

MWYF-05\*N-7BHT30

1:Au 1U\* W:WHITE  
6:Au 30U\* B:BLACK  
T:TIN  
N:NICKEL  
1:PBT  
2:PA6T  
3:PA9T  
4:LCP  
7:PA10T

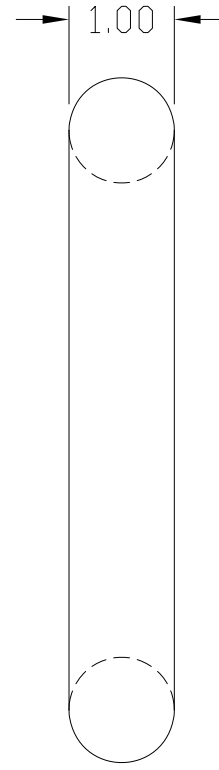
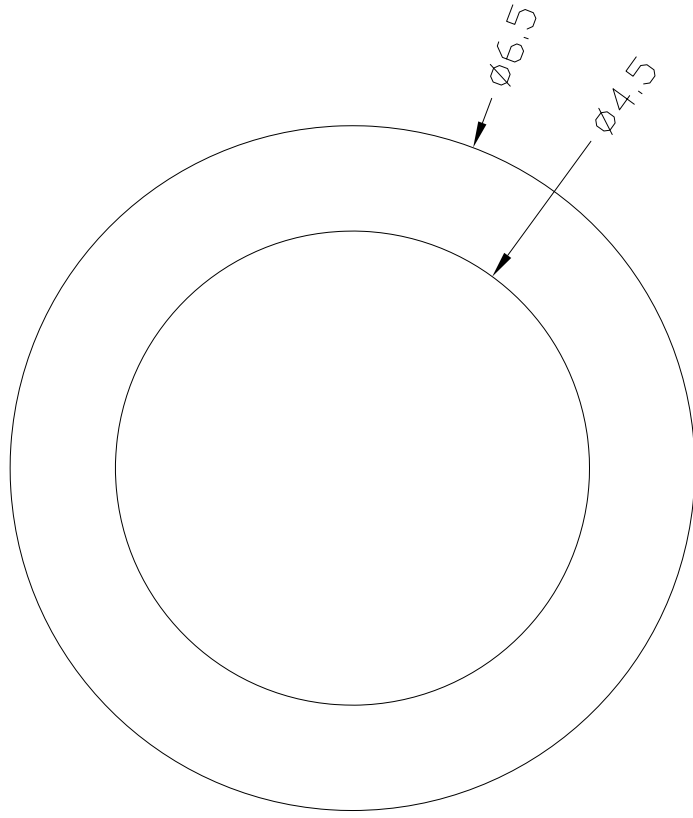
Bill of materials:

| NO    | PARTS     | MATERIAL        | QTY | FINISHING     | X. ±0.35  | X.' ±2' | UNITS    | mm | 雅安科技有限公司<br>ACCURATE INNOTECH INC.                           |       |      |                  |                               |
|-------|-----------|-----------------|-----|---------------|---|---------|----------|----|--|-------|------|------------------|-------------------------------|
| 4     | INSULATOR | LCP             | 1   | UL94V-0       | .X ±0.3   | .X' ±1' | MAT'L    |    | TITLE:<br>WATERPROOF MICRO USB B TYPE<br>5P FEMALE CONNECTOR |       |      |                  |                               |
| 3     | HOUSING   | PA10T           | 1   | UL94V-0       | .XX ±0.25   | .XX'    | SEE NOTE |    |  |       |      |                  | PART NO.:<br>MWYF-05XN-7BHT30 |
| 2     | SHELL     | STAINLESS STEEL | 1   | PLATED NICKED | .XXX ±0.15  | .XXX'   | FINISH   |    | DR: Ricky 2017/06/09   |       |      |                  |                               |
| 1     | TERMINAL  | COPPER ALLOY    | 5   | PLATED GOLD   | THESE DRAWINGS AND SPECIFICATIONS ARE THE PROPERTY OF ACCURATE INNOTECH AND SHALL NOT BE REPRODUCED, COPIED OR USED IN ANY MANNER WITHOUT THE PRIOR WRITTEN CONSENT OF ACCURATE INNOTECH INC. |         |          |    | DWG NO.:<br>AII-HT30   |       |      |                  |                               |
| NO    | PARTS     | MATERIAL        | QTY | FINISHING     |   |         |          |    | Q'TY   |       |      |                  | CHKD: Ricky 2017/06/09        |
| APPD: |           |                 |     |               |   |         |          |    | SCALE  | SHEET | REV. | CUSTOMER DRAWING |                               |
|       |           |                 |     |               |   |         |          |    | 4:1  | 1/1   | B    |                  |                               |



RoHS  
Compliant  
2002/95/EC

| REV. | ECN. | NO. | APPD. |
|------|------|-----|-------|
|      |      |     |       |
|      |      |     |       |
|      |      |     |       |



NOTES  
MATERIAL  
M1.MATERIAL : Silicone , 94V0  
M2.HARDNESS : 70°

Bill of materials:

| NO | PARTS | MATERIAL | QTY | FINISHING | .X   | ±0.20 | X.*  | UNITS    | mm | 雅安科技有限公司<br>ACCURATE INNOTECH INC. |  |                     |       |      |          |
|----|-------|----------|-----|-----------|------|-------|------|----------|----|------------------------------------|--|---------------------|-------|------|----------|
| 4  |       |          |     |           | .XX  | ±0.10 | .X*  | MAT'L    |    | TITLE: □-RING                      |  | PART NO.: □-RING-1  |       |      |          |
| 3  |       |          |     |           | .XXX | ±0.05 | .XX* | SEE NOTE |    | DR: <i>Ricky</i> 2023/03/15        |  | DWG NO.: AII-RING-1 |       |      |          |
| 2  |       |          |     |           |      |       |      | FINISH   |    | CHKD: <i>Ricky</i> 2023/03/15      |  | SCALE               | SHEET | REV. | CUSTOMER |
| 1  |       |          |     |           |      |       |      | SEE NOTE |    | APPD:                              |  | 10:1                | 1/1   | B    | DRAWING  |
|    |       |          |     |           |      |       |      | Q'TY     |    |                                    |  |                     |       |      |          |

THESE DRAWINGS AND SPECIFICATIONS ARE THE PROPERTY OF ACCURATE INNOTECH AND SHALL NOT BE REPRODUCED, COPIED OR USED IN ANY MANNER WITHOUT THE PRIOR WRITTEN CONSENT OF ACCURATE INNOTECH INC

