

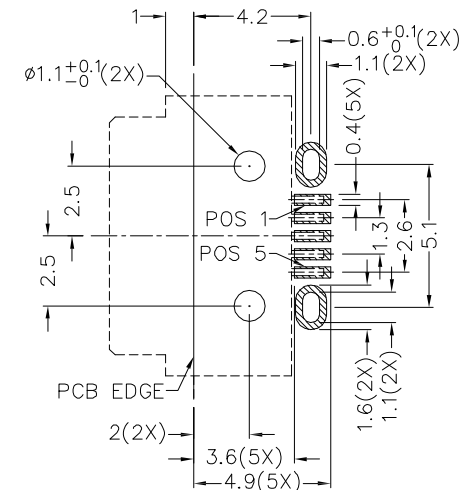
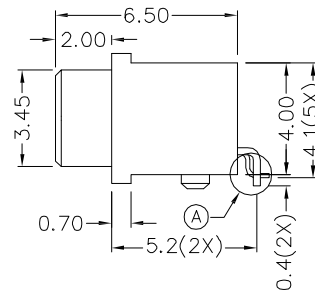
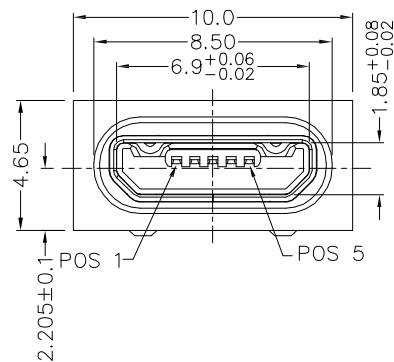
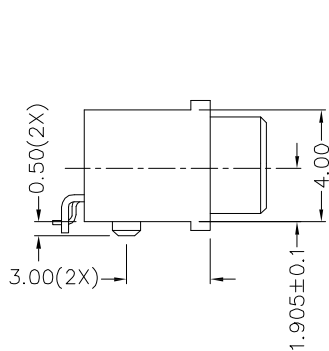


RoHS Compliant  
2002/95/EC

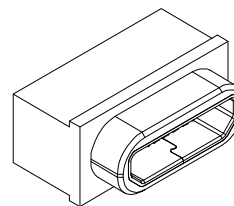
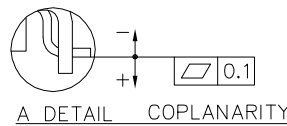
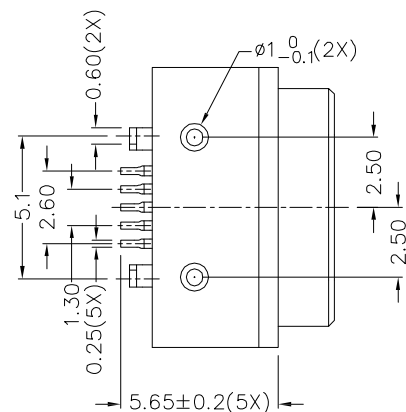


Halogen Free

REV.	ECN. NO.	APPD.



RECOMMENDED PCB LAYOUT  
TOLERANCE: ±0.05  
(TOP VIEW)



NOTES:

- ELECTRICAL NOTES:
  - CURRENT RATING: PIN 1,5: 1.8A/30V AC MAX.; PIN 2,3,4: 0.5A/30V AC MAX.
  - INSULATION RESISTANCE: 100MΩ MIN;
  - CONTACT RESISTANCE: 30mΩ MAX. AFTER DURABILITY TEST 40mΩ MAX.
  - WITHSTANDING VOLTAGE: 250V AC;
  - OPERATING TEMPERATURE: -40°C TO +85°C.
- MECHANICAL:
  - MATING FORCE: 35N MAX.
  - UNMATING FORCE: 8N MIN.
  - DURABILITY: 10,000 CYCLES
- DIMENSIONS MARKED '▼' TO BE CHECKED BY Q.C & IPQC.

4.PART NO.  
MWYF-051N-7BHT31

1: Au 1U\*  
2: Au 3U\*  
5: Au 15U\*  
6: Au 30U\*

W: WHITE  
B: BLACK  
1: PBT  
2: PA6T  
3: PA9T  
4: LCP  
7: PA10T

Bill of materials:

NO	PARTS	MATERIAL	QTY	FINISHING	.X	±0.20	X.*	UNITS	mm
7					.X	±0.20	X.*	UNITS	mm
6					.XX	±0.10	.X*	MAT'L	
5					.XXX	±0.05	.XX*	SEE NOTE	
4	INSULATOR	LCP+30%GF	1	UL94V-0				FINISH	
3	HOUSING	PA10T+30%GF	1	UL94V-0				SEE NOTE	
2	SHELL	STAINLESS STEEL	1	PLATED NICKEL	THESE DRAWINGS AND SPECIFICATIONS ARE THE PROPERTY OF ACCURATE INNOTECH AND SHALL NOT BE REPRODUCED, COPIED OR USED IN ANY MANNER WITHOUT THE PRIOR WRITTEN CONSENT OF ACCURATE INNOTECH INC.				
1	TERMINAL	COPPER ALLOY	5	PLATED NICKEL/GOLD	Q'TY			DR:	<i>Ricky</i> 2023/03/15
								CHKD:	<i>Ricky</i> 2023/03/15
								APPD:	

雅安科技有限公司  
ACCURATE INNOTECH INC.

TITLE: WATERPROOF/DUSTPROOF MICRO USB B TYPE 5P FEMALE CONNECTOR

PART NO.: MWYF-05XN-7BHT31

DR: *Ricky* 2023/03/15

DWG NO.: AII-HT31

CHKD: *Ricky* 2023/03/15

SCALE: 4:1

SHEET: 1/1

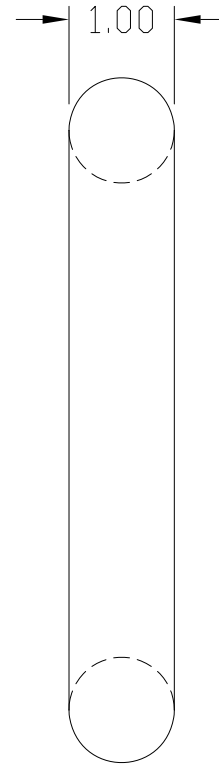
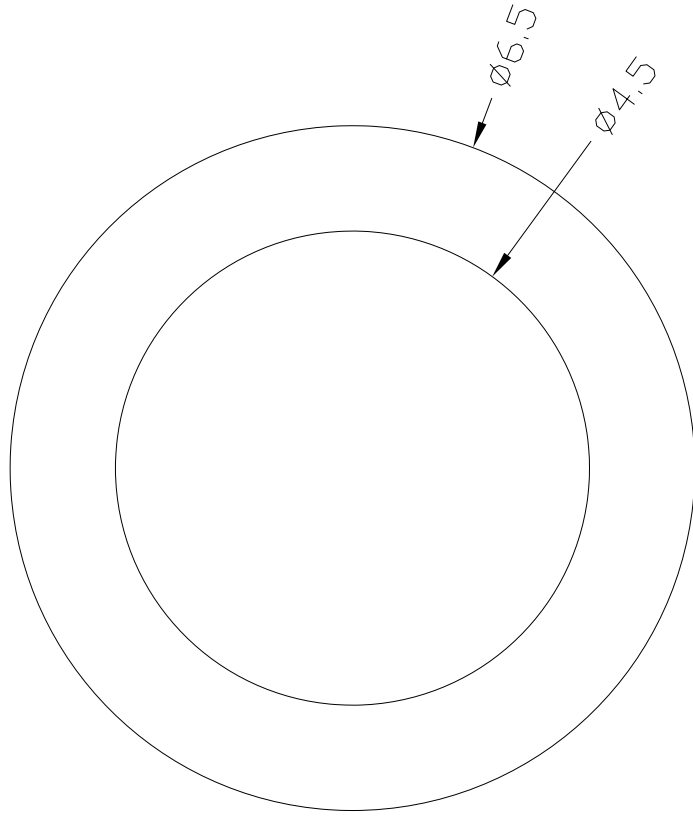
REV.: B

CUSTOMER DRAWING



RoHS  
Compliant  
2002/95/EC

REV.	ECN.	NO.	APPD.



NOTES  
MATERIAL  
M1.MATERIAL : Silicone , 94V0  
M2.HARDNESS : 70°

Bill of materials:

NO	PARTS	MATERIAL	QTY	FINISHING	.X	±0.20	X.*	UNITS	mm	雅安科技有限公司 ACCURATE INNOTECH INC.					
4					.X	±0.20	X.*	MAT'L		TITLE: □-RING		PART NO.: □-RING-1			
3					.XX	±0.10	.X*	SEE NOTE		DR: <i>Ricky</i> 2023/03/15		DWG NO.: AII-RING-1			
2					.XXX	±0.05	.XX*	FINISH		CHKD: <i>Ricky</i> 2023/03/15		SCALE	SHEET	REV.	CUSTOMER
1					THESE DRAWINGS AND SPECIFICATIONS ARE THE PROPERTY OF ACCURATE INNOTECH AND SHALL NOT BE REPRODUCED, COPIED OR USED IN ANY MANNER WITHOUT THE PRIOR WRITTEN CONSENT OF ACCURATE INNOTECH INC.			Q'TY		APPD:	10:1	1/1	B	DRAWING	

