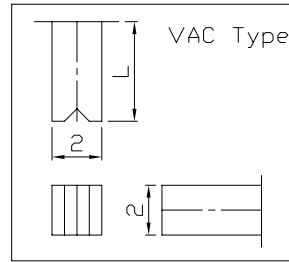
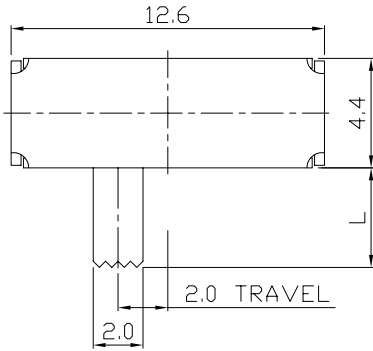




RoHS
Compliant
2002/95/EC

REV.	ECN.	NO.	APPD.

DIMENSIONS

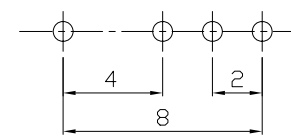


MODEL CODE

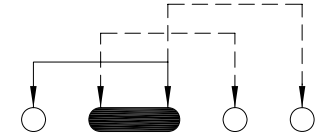
SK-13D21-GEE

Knob Type
GEE
VAC

L(mm)
~



P.C.B LAYOUT
BOTTOM VIEW

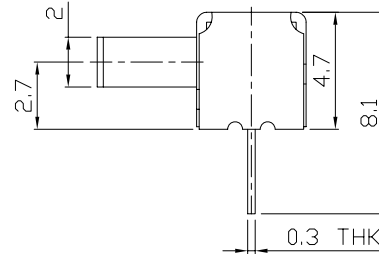
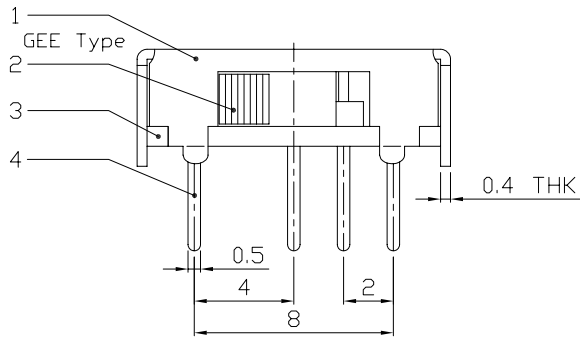


CIRCUIT DIAGRAM

ELECTRO-MECHANICAL CHARACTERISTICS

Refer to additional specifications

RATING	0.3A 30V DC
CIRCUIT	1P3T
CONTACT RESISTANCE	30mΩ MAX.
TIMING	SHORTING
TRAVEL	2mm
OPERATING FORCE	<T1→T2 T3→T2>200±100gf <T2→T3 T2→T1>300±100gf
OPERATING LIFE(cycles)	10,000



8					WITHIN 1.5mm: ±0.1mm	UNITS	mm	雅安科技有限公司 ACCURATE INNOTECH INC.
7					OVER 1.5mm: ±0.2mm	MAT'L		
6	SPRING PLATE	STAINLESS STEEL	1	NATURAL		SEE NOTE		TITLE:
5	CONTACT CLIP	PBS C5210R-EH	1	Ag CLAD				SLIDE SWITCH / HORIZONTAL
4	TERMINAL	BRASS STRIP	4	Ag PLATED OVER Ni PLATED				PART NO.:
3	BASE	PHENOLIC RESIN	1	NATURAL		FINISH		SK-13D21
2	KNOB	POM	1	BLACK		SEE NOTE		DR: <i>Ricky</i> 2015/12/09
1	FRAME	STEEL STRIP	1	Ni PLATED		Q'TY		DWG NO.:
NO.	PARTS	MATERIAL	Q'TY	FINISHING				ADJ-13D21

THESE DRAWINGS AND SPECIFICATIONS ARE THE PROPERTY OF ACCURATE INNOTECH INC AND SHALL NOT BE REPRODUCED, COPIED OR USED IN ANY MANNER WITHOUT THE PRIOR WRITTEN CONSENT OF ACCURATE INNOTECH INC.



APPD:

SCALE	SHEET	REV.	CUSTOMER DRAWING
4:1	1/1	A	