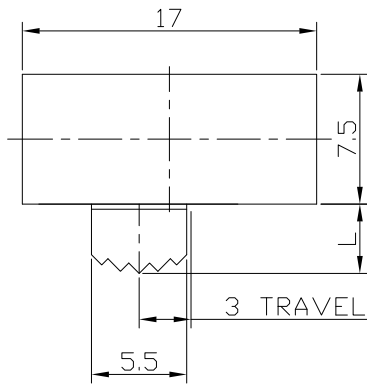




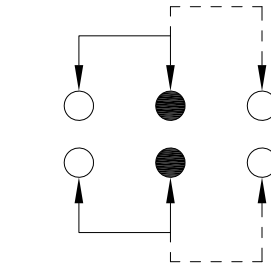
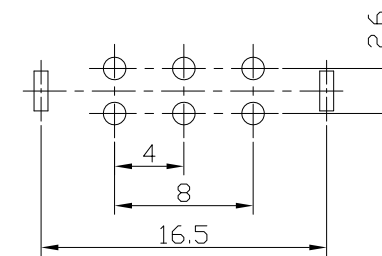
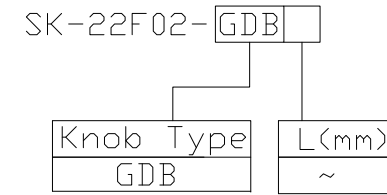
RoHS Compliant  
2002/95/EC

REV.	ECN.	NO.	APPD.

DIMENSIONS



MODEL CODE

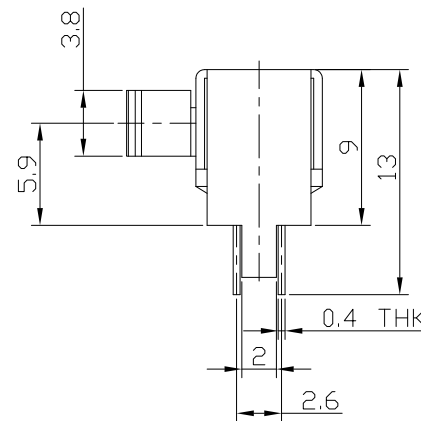
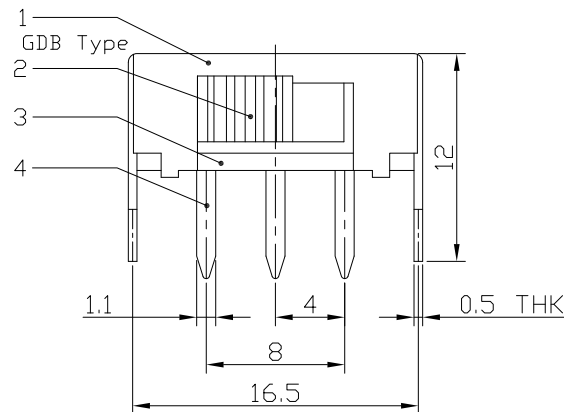


P.C.B LAYOUT  
BOTTOM VIEW

CIRCUIT DIAGRAM

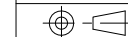
ELECTRO-MECHANICAL CHARACTERISTICS  
Refer to additional specifications

RATING	0.5A 50V DC
CIRCUIT	2P2T
CONTACT RESISTANCE	100mΩ MAX.
TIMING	NON-SHORTING
TRAVEL	3mm
OPERATING FORCE	200±80gf
OPERATING LIFE(cycles)	10,000



8					WITHIN 1.5mm: ±0.1mm	UNITS	mm	<p>雅安科技有限公司 ACCURATE INNOTECH INC.</p> <p>TITLE: SLIDE SWITCH / HORIZONTAL</p> <p>PART NO.: SK-22F02</p> <p>DR: Ricky 2016/06/24</p> <p>DWG NO.: ADL-22F02</p> <p>CHKD: Ricky 2016/06/24</p> <p>APPD:</p>
7					OVER 1.5mm: ±0.2mm	MAT'L		
6	SPRING	STEEL WIRE	2	NATURAL		SEE NOTE		
5	CONTACT	BRASS STRIP	2	Ag PLATED				
4	TERMINAL	BRASS STRIP	6	Ag PLATED				
3	BASE	PHENOLIC RESIN	1	BLACK		FINISH		
2	KNOB	POM	1	BLACK		SEE NOTE		
1	FRAME	STEEL STRIP	1	Ni PLATED		Q'TY		
NO.	PARTS	MATERIAL	Q'TY	FINISHING				

THESE DRAWINGS AND SPECIFICATIONS ARE THE PROPERTY OF ACCURATE INNOTECH INC AND SHALL NOT BE REPRODUCED, COPIED OR USED IN ANY MANNER WITHOUT THE PRIOR WRITTEN CONSENT OF ACCURATE INNOTECH INC.



SCALE	SHEET	REV.	CUSTOMER DRAWING
2:1	1/1	A	