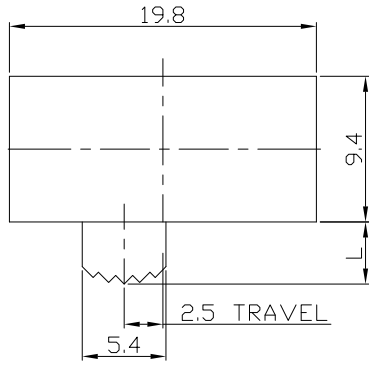




RoHS
Compliant
2002/95/EC

REV.	ECN.	NO.	APPD.

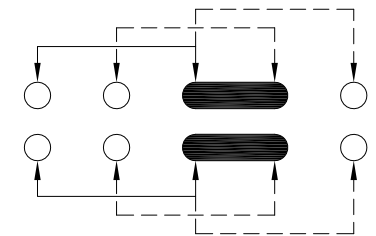
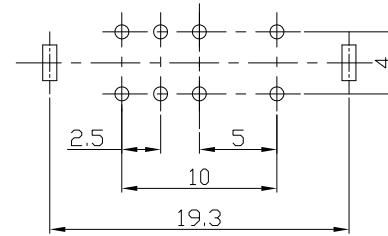
DIMENSIONS



MODEL CODE

SK-23E01- GDB

Knob Type	L(mm)
GDB	~



P.C.B LAYOUT

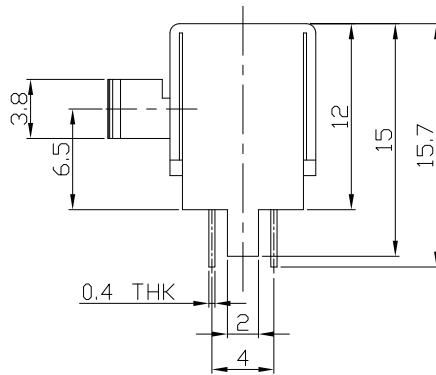
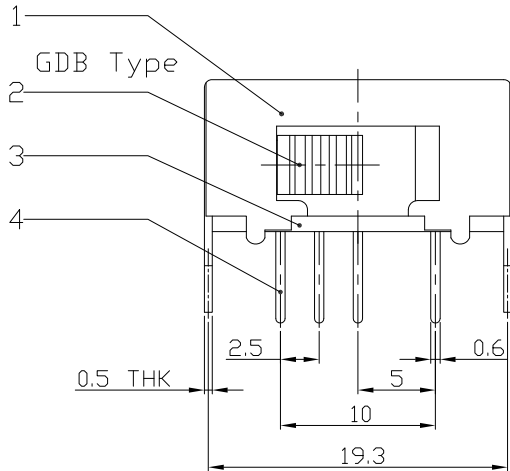
BOTTOM VIEW

CIRCUIT DIAGRAM

ELECTRO-MECHANICAL CHARACTERISTICS

Refer to additional specifications

RATING	0.3A 50V DC
CIRCUIT	2P3T
CONTACT RESISTANCE	100mΩ MAX.
TIMING	SHORTING
TRAVEL	2.5mm
OPERATING FORCE	300±100gf
OPERATING LIFE(cycles)	10,000



8							
7	STEEL BALL	STEEL	1	NATURAL	WITHIN 1.5mm: ±0.1mm	UNITS	<p>雅安科技有限公司 ACCURATE INNOTECH INC.</p> <p>TITLE: SLIDE SWITCH / HORIZONTAL</p> <p>DR: <i>Ricky</i> 2016/07/13</p> <p>CHKD: <i>Ricky</i> 2016/07/13</p> <p>APPD:</p>
6	SPRING	STEEL WIRE	1	NATURAL	OVER 1.5mm: ±0.2mm	MAT'L	
5	CONTACT CLIP	PBS C5210R-EH	2	Ag PLATED		SEE NOTE	
4	TERMINAL	BRASS STRIP	8	Ag PLATED		SEE NOTE	
3	BASE	PHENOLIC RESIN	1	NATURAL		FINISH	PART NO.: SK-23E01
2	KNOB	POM	1	BLACK		Q'TY	DWG NO.: ADL-23E01
1	FRAME	STEEL STRIP	1	Ni PLATED			SCALE: 2:1
NO.	PARTS	MATERIAL	Q'TY	FINISHING			SHEET: 1/1
							REV.: A
							CUSTOMER DRAWING

THESE DRAWINGS AND SPECIFICATIONS ARE THE PROPERTY OF ACCURATE INNOTECH INC AND SHALL NOT BE REPRODUCED, COPIED OR USED IN ANY MANNER WITHOUT THE PRIOR WRITTEN CONSENT OF ACCURATE INNOTECH INC.

