



RoHS  
Compliant  
2002/95/EC

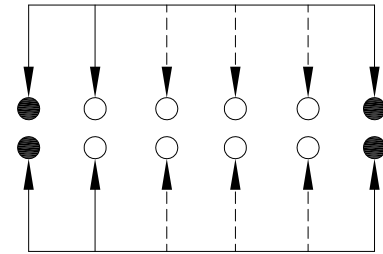
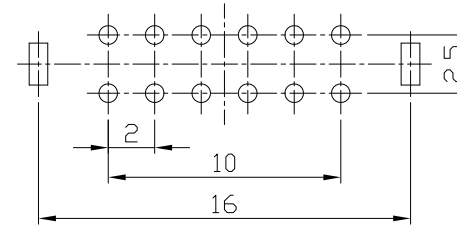
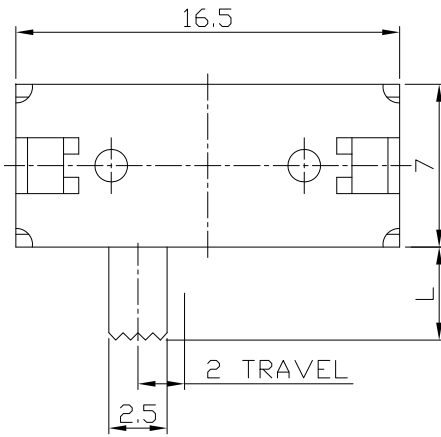
REV.	ECN.	NO.	APPD.

MODEL CODE

SK-24D03-GBC

Knob Type	L(mm)
GBC	~

DIMENSIONS



P.C.B LAYOUT

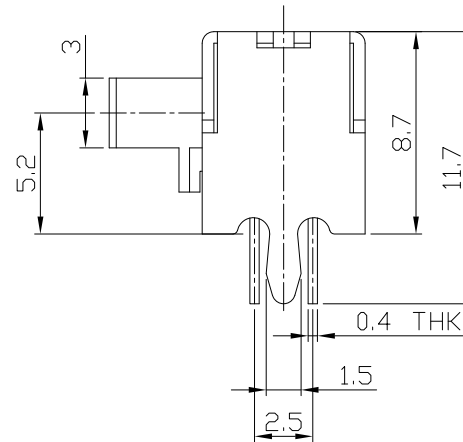
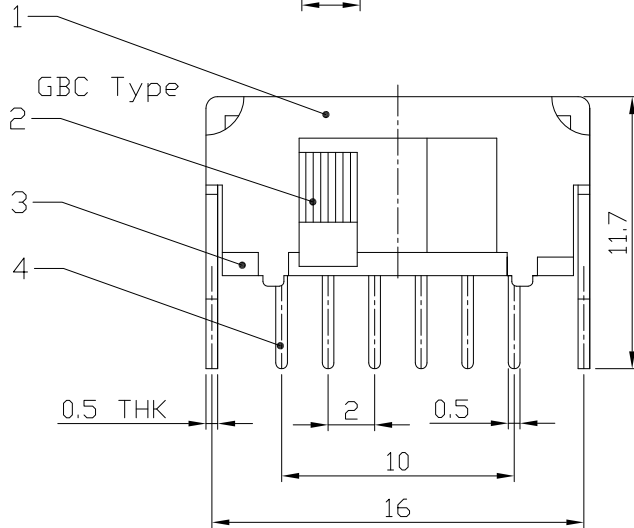
BOTTOM VIEW

CIRCUIT DIAGRAM

ELECTRO-MECHANICAL CHARACTERISTICS

Refer to additional specifications

RATING	0.3A 50V DC
CIRCUIT	2P4T
CONTACT RESISTANCE	100mΩ MAX.
TIMING	NON-SHORTING
TRAVEL	2mm
OPERATING FORCE	500±150gf
OPERATING LIFE(cycles)	10,000



8							
7							
6	SPRING PLATE	SUS	1	NATURAL	WITHIN 1.5mm: ±0.1mm	UNITS	雅安科技有限公司 ACCURATE INNOTECH INC.
5	CONTACT CLIP	PBS STRIP	2	Ag PLATED	OVER 1.5mm: ±0.2mm	mm	
4	TERMINAL	BRASS STRIP	12	Ag PLATED		MAT'L	TITLE: SLIDE SWITCH / HORIZONTAL
3	BASE	PHENOLIC RESIN	1	NATURAL		SEE NOTE	
2	KNOB	POM	1	BLACK		FINISH	SK-24D03
1	FRAME	STEEL STRIP	1	Ni PLATED		SEE NOTE	DR: <i>Ricky</i> 2016/07/15
NO.	PARTS	MATERIAL	Q'TY	FINISHING		Q'TY	CHKD: <i>Ricky</i> 2016/07/15
							DWG NO.:
							ADL-24D03
							SCALE
							3:1
							SHEET
							1/1
							REV.
							A
							CUSTOMER
							DRAWING

THESE DRAWINGS AND SPECIFICATIONS ARE THE PROPERTY OF ACCURATE INNOTECH INC AND SHALL NOT BE REPRODUCED, COPIED OR USED IN ANY MANNER WITHOUT THE PRIOR WRITTEN CONSENT OF ACCURATE INNOTECH INC.

