



RoHS
Compliant
2002/95/EC

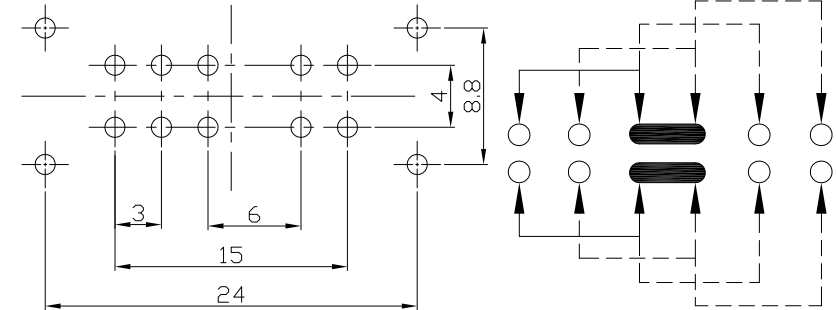
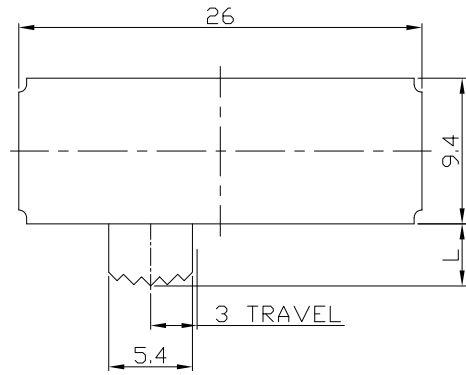
REV.	ECN.	NO.	APPD.

MODEL CODE

SK-24F01-GDB

Knob Type	L(mm)
GDB	~

DIMENSIONS



P.C.B LAYOUT
BOTTOM VIEW

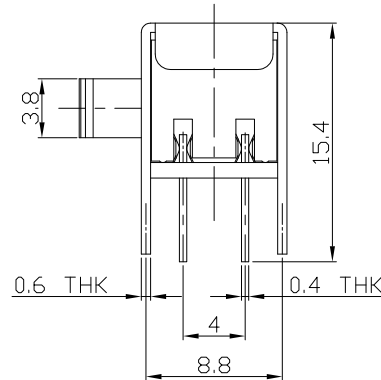
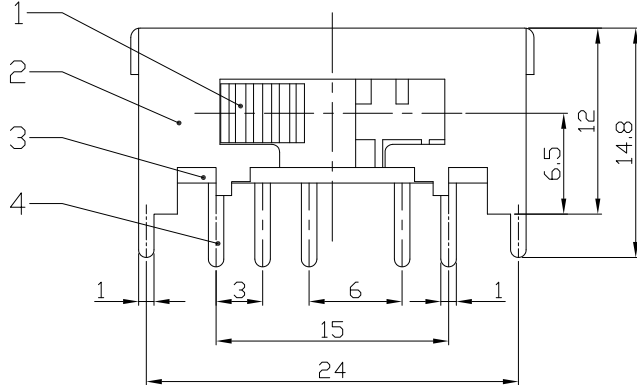
CIRCUIT DIAGRAM

ELECTRO-MECHANICAL CHARACTERISTICS

Refer to additional specifications

RATING	0.3A 50V DC
CIRCUIT	2P4T
CONTACT RESISTANCE	100mΩ MAX.
TIMING	SHORTING
TRAVEL	3mm
OPERATING FORCE	200±100gf
OPERATING LIFE(cycles)	10,000

GDB Type

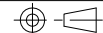


8					WITHIN 1.5mm: ±0.1mm	UNITS	mm	雅安科技有限公司 ACCURATE INNOTECH INC.
7	STEEL BALL	STEEL	1	NATURAL	OVER 1.5mm: ±0.2mm	MAT'L		
6	SPRING	STEEL WIRE	1	NATURAL		SEE NOTE		TITLE:
5	CONTACT CLIP	PBS STRIP	2	Ag PLATED				SLIDE SWITCH / HORIZONTAL
4	TERMINAL	BRASS STRIP	10	Ag PLATED				PART NO.:
3	BASE	PHENOLIC RESIN	1	BLACK				SK-24F01
2	FRAME	STEEL STRIP	1	Ni PLATED				DR: Ricky 2016/07/14
1	KNOB	POM	1	BLACK				DWG NO.:
NO.	PARTS	MATERIAL	Q'TY	FINISHING				ADL-24F01
								SCALE
								2:1
								SHEET
								1/1
								REV.
								A
								CUSTOMER
								DRAWING

THESE DRAWINGS AND SPECIFICATIONS ARE THE PROPERTY OF ACCURATE INNOTECH INC AND SHALL NOT BE REPRODUCED, COPIED OR USED IN ANY MANNER WITHOUT THE PRIOR WRITTEN CONSENT OF ACCURATE INNOTECH INC.

Q'TY	
FINISH	SEE NOTE
UNITS	mm

APPD:	Ricky 2016/07/14
CHKD:	Ricky 2016/07/14
DR:	Ricky 2016/07/14



SCALE	SHEET	REV.	CUSTOMER
2:1	1/1	A	DRAWING