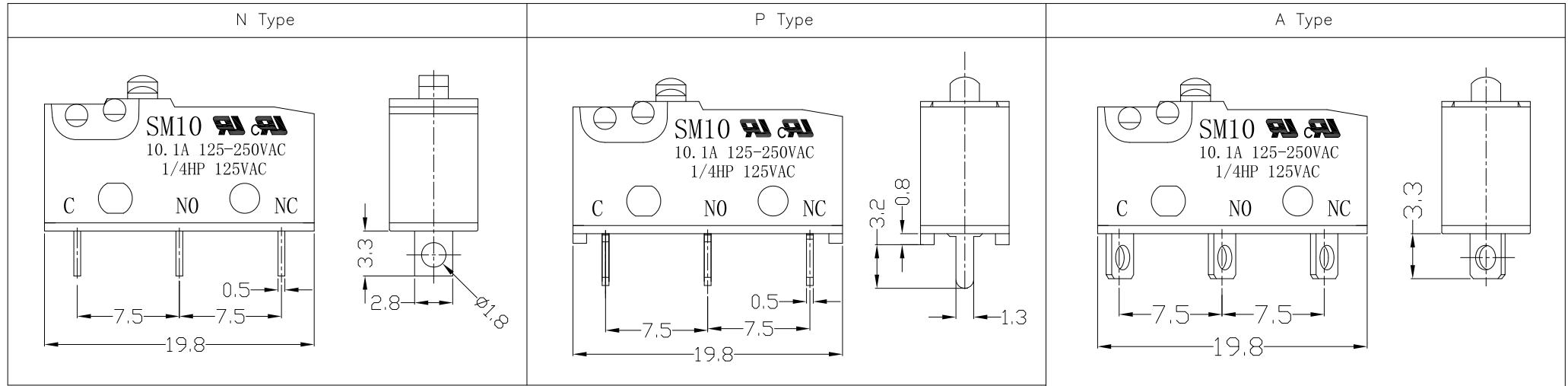




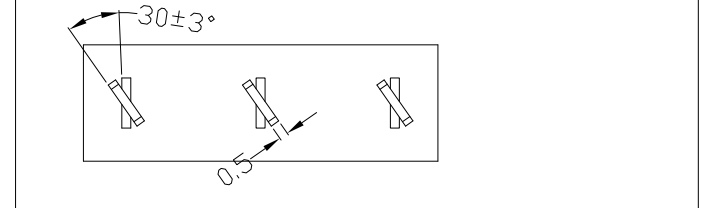
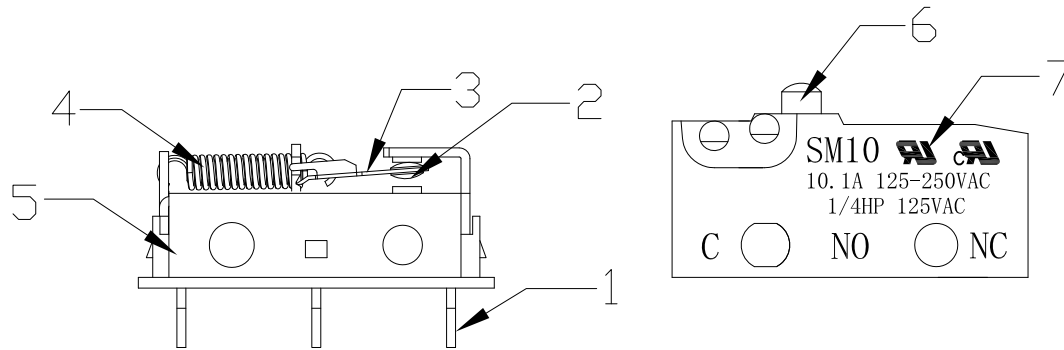
RoHS
Compliant
2002/95/EC

REV.	ECN. NO.	NO.	APPD.

Terminal Type



Structure chart



Material list

NO.	PARTS	MATERIAL	Q'TY	FINISHING
8				
7	Upper Housing	PBT	1	Black
6	Button	PBT	1	Black
5	Lower Housing	PBT	1	Black
4	Spring	SUS304	1	
3	Change Plate	C5210	1	
2	Contact	Silver alloy	3	
1	Terminal	C2680	3	

Tolerance: ±0.2	UNITS	mm					
	MAT'L	SEE NOTE					
FINISH	SEE NOTE		TITLE:		PART NO.:		
	SEE NOTE		MICRO SWITCH SM10 SERIES		SM10-00X-XX		
Q'TY	SEE NOTE		DR: <i>Ricky</i> 2017/4/7		DWG NO.:		
	SEE NOTE		CHKD: <i>Ricky</i> 2017/4/7		ATD-00X-XX		
<small>THESE DRAWINGS AND SPECIFICATIONS ARE THE PROPERTY OF ACCURATE INNOTECH INC AND SHALL NOT BE REPRODUCED, COPIED OR USED IN ANY MANNER WITHOUT THE PRIOR WRITTEN CONSENT OF ACCURATE INNOTECH INC.</small>			APPD:	SCALE	SHEET	REV.	CUSTOMER
				1:1	2/2	A	DRAWING

雅安科技有限公司
ACCURATE INNOTECH INC.

TITLE: MICRO SWITCH SM10 SERIES
PART NO.: SM10-00X-XX
DR: *Ricky* 2017/4/7
DWG NO.: ATD-00X-XX
CHKD: *Ricky* 2017/4/7

SCALE: 1:1
SHEET: 2/2
REV.: A
CUSTOMER DRAWING