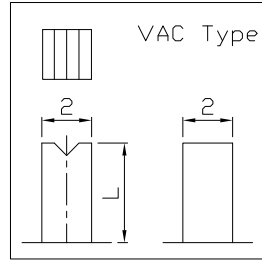
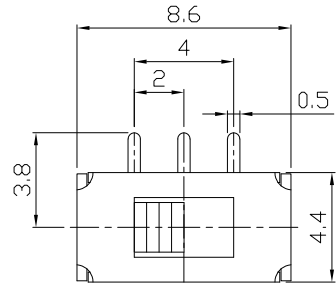




RoHS  
Compliant  
2002/95/EC

REV.	ECN.	NO.	APPD.

DIMENSIONS

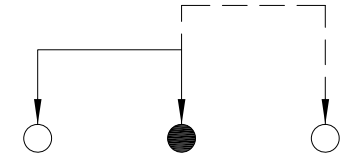
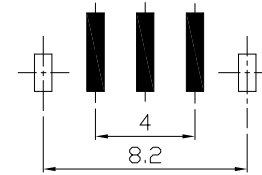


MODEL CODE

SS-12D25-GEE

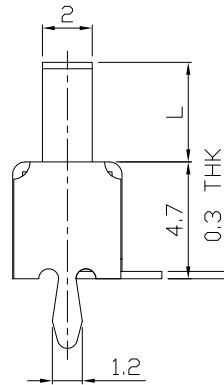
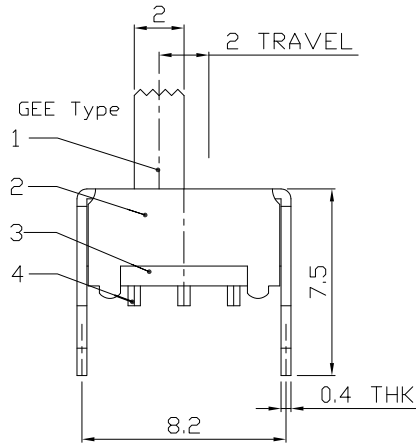
Knob Type
GEE
VAC

L(mm)
~



P.C.B LAYOUT  
BOTTOM VIEW

CIRCUIT DIAGRAM



ELECTRO-MECHANICAL CHARACTERISTICS  
Refer to additional specifications

RATING	0.3A 50V DC
CIRCUIT	1P2T
CONTACT RESISTANCE	30mΩ MAX.
TIMING	NON-SHORTING
TRAVEL	2mm
OPERATING FORCE	250±100gf
OPERATING LIFE(cycles)	10,000

8															
7															
6	SPRING PLATE	STAINLESS STEEL	1	NATURAL	WITHIN 1.5mm: ±0.1mm	UNITS mm	<p>雅安科技有限公司 ACCURATE INNOTECH INC.</p> <p>TITLE: SLIDE SWITCH / VERTICAL PART NO.: SS-12D25</p> <p>DR: Ricky 2015/06/09 DWG NO.: ADJ-12D25</p> <p>CHKD: Ricky 2015/06/09</p> <p>APPD:</p> <table border="1"> <tr> <th>SCALE</th> <th>SHEET</th> <th>REV.</th> <th>CUSTOMER DRAWING</th> </tr> <tr> <td>4:1</td> <td>1/1</td> <td>A</td> <td></td> </tr> </table>	SCALE	SHEET	REV.	CUSTOMER DRAWING	4:1	1/1	A	
SCALE	SHEET	REV.	CUSTOMER DRAWING												
4:1	1/1	A													
5	CONTACT CLIP	PBS STRIP	1	Ag PLATED	OVER 1.5mm: ±0.2mm	MAT'L SEE NOTE									
4	TERMINAL	BRASS STRIP	3	Ag PLATED OVER Ni PLATED		FINISH SEE NOTE									
3	BASE	PHENOLIC RESIN	1	NATURAL		Q'TY									
2	FRAME	STEEL STRIP	1	Ni PLATED											
1	KNOB	POM	1	BLACK											
NO.	PARTS	MATERIAL	Q'TY	FINISHING											

THESE DRAWINGS AND SPECIFICATIONS ARE THE PROPERTY OF ACCURATE INNOTECH INC AND SHALL NOT BE REPRODUCED, COPIED OR USED IN ANY MANNER WITHOUT THE PRIOR WRITTEN CONSENT OF ACCURATE INNOTECH INC.

