



RoHS Compliant
2002/95/EC

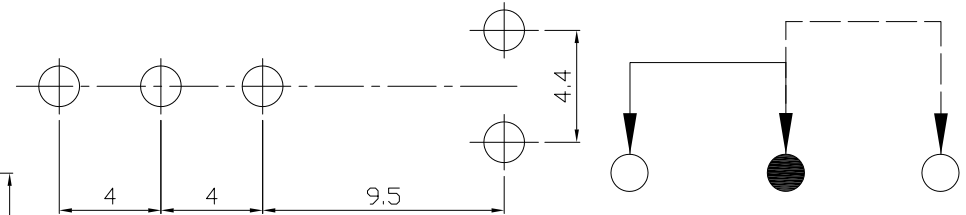
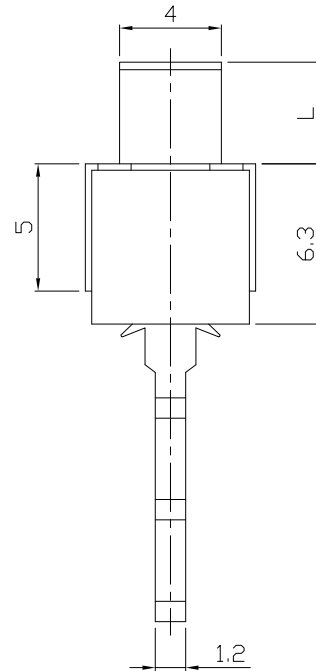
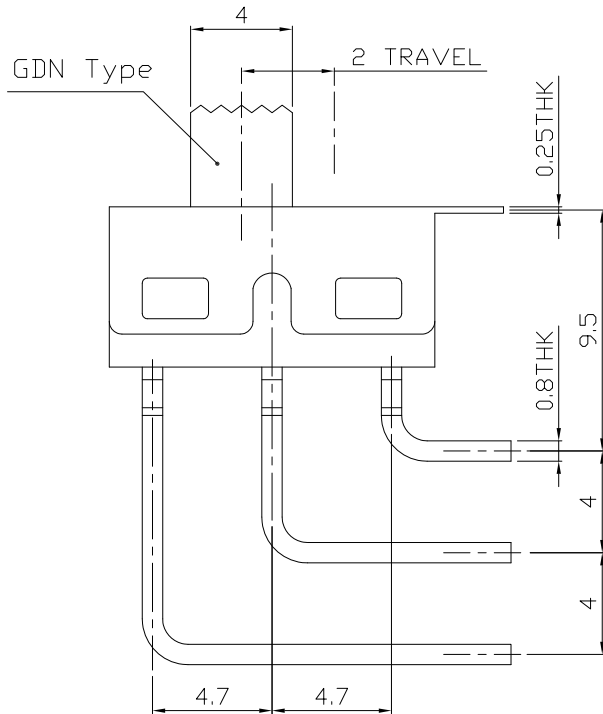
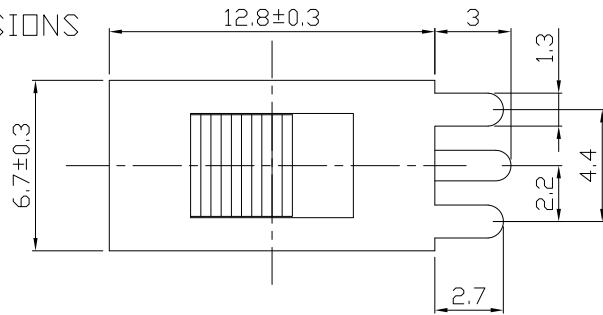
REV.	ECN.	NO.	APPD.

MODEL CODE

SS-12D28-GDN

Knob Type	L(mm)
GDN	~

DIMENSIONS



P.C.B LAYOUT
BOTTOM VIEW

CIRCUIT DIAGRAM

ELECTRO-MECHANICAL CHARACTERISTICS
Refer to additional specifications

RATING	AC 125V DR 28V DC 3A
CIRCUIT	1P2T
CONTACT RESISTANCE	100mΩ MAX.
TIMING	NON-SHORTING
TRAVEL	2mm
OPERATING FORCE	350±100gf
OPERATING LIFE(cycles)	10,000

NO.	PARTS	MATERIAL	Q'TY	FINISHING
8				
7	SPRING	SUS	1	
6	SPRING PLATE	PBS	1	Ag PLATED
5	COVER	SUS	1	WASHING
4	CONTACT FOOT	BRASS	3	Ag PLATED
3	BAR	PA66	1	RED
2	KONB	PA66	1	BLACK
1	CASE	PA9T	1	RED

WITHIN 1.5mm: ±0.1mm	UNITS mm
OVER 1.5mm: ±0.2mm	MAT'L
	SEE NOTE
	FINISH
	SEE NOTE
THESE DRAWINGS AND SPECIFICATIONS ARE THE PROPERTY OF ACCURATE INNOTECH INC AND SHALL NOT BE REPRODUCED, COPIED OR USED IN ANY MANNER WITHOUT THE PRIOR WRITTEN CONSENT OF ACCURATE INNOTECH INC.	Q'TY

雅安科技有限公司 ACCURATE INNOTECH INC.			
TITLE: SLIDE SWITCH / VERTICAL	PART NO.: SS-12D28		
DR: Ricky 2016/02/17	DWG NO.: ADL-12D28		
CHKD: Ricky 2016/02/17	SCALE	SHEET	REV.
APPD:	1:1	1/1	A
			CUSTOMER DRAWING