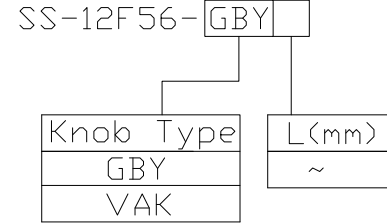




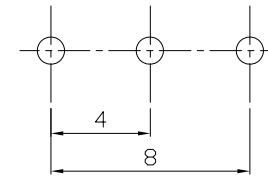
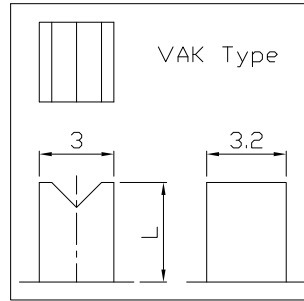
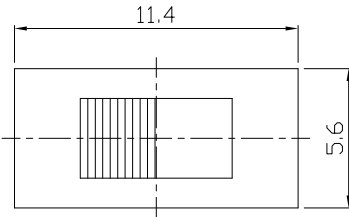
RoHS
Compliant
2002/95/EC

REV.	ECN.	NO.	APPD.

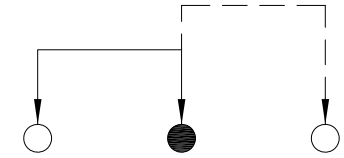
MODEL CODE



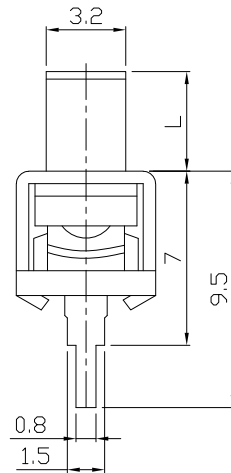
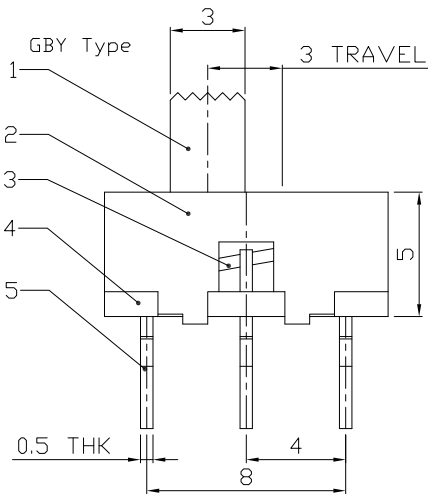
DIMENSIONS



P.C.B LAYOUT
BOTTOM VIEW



CIRCUIT DIAGRAM



ELECTRO-MECHANICAL CHARACTERISTICS

Refer to additional specifications

RATING	0.5A 50V DC
CIRCUIT	1P2T
CONTACT RESISTANCE	30mΩ MAX.
TIMING	NON-SHORTING
TRAVEL	3mm
OPERATING FORCE	200±100gf
OPERATING LIFE(cycles)	10,000

8					
7					
6	SPRING	STEEL WIRE	1	NATURAL	
5	TERMINAL	BRASS STRIP	3	Ag PLATED OVER Ni PLATED	
4	BASE	PHENDLIC RESIN	1	YELLOW	
3	CONTACT	BRASS STRIP	1	Ag PLATED OVER Ni PLATED	
2	FRAME	STEEL STRIP	1	Ni PLATED	
1	KNOB	PDM	1	BLACK	
NO.	PARTS	MATERIAL	Q'TY	FINISHING	

WITHIN 1.5mm: ±0.1mm
OVER 1.5mm: ±0.2mm

UNITS mm

MAT'L SEE NOTE

FINISH SEE NOTE

Q'TY

THESE DRAWINGS AND SPECIFICATIONS ARE THE PROPERTY OF ACCURATE INNOTECH INC AND SHALL NOT BE REPRODUCED, COPIED OR USED IN ANY MANNER WITHOUT THE PRIOR WRITTEN CONSENT OF ACCURATE INNOTECH INC.

雅安科技有限公司
ACCURATE INNOTECH INC.

TITLE: SLIDE SWITCH / VERTICAL

PART NO.: SS-12F56

DR: Ricky 2015/06/09

DWG NO.: ADJ-12F56

CHKD: Ricky 2015/06/09

APPD:

SCALE	SHEET	REV.	CUSTOMER
4:1	1/1	A	DRAWING