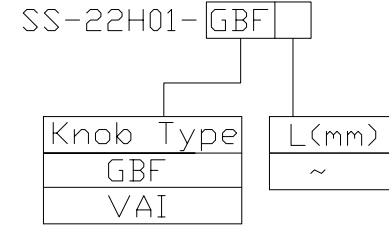




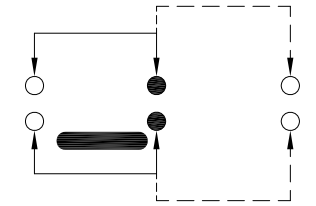
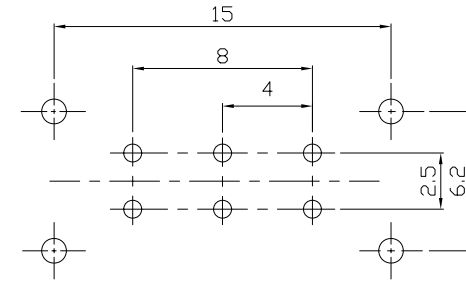
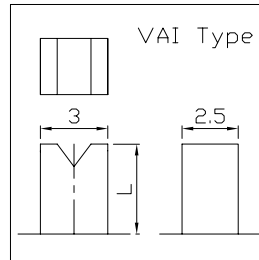
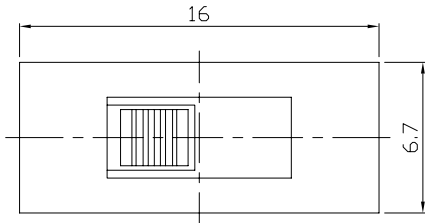
RoHS
Compliant
2002/95/EC

REV.	ECN.	NO.	APPD.

MODEL CODE



DIMENSIONS



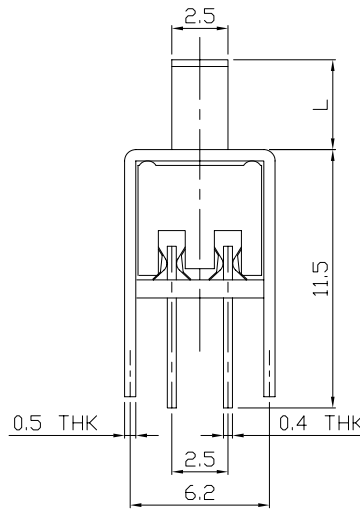
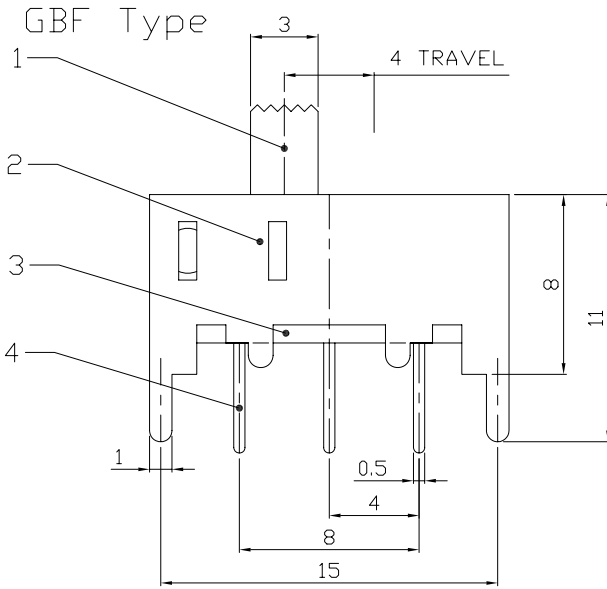
P.C.B LAYOUT
BOTTOM VIEW

CIRCUIT DIAGRAM

ELECTRO-MECHANICAL CHARACTERISTICS

Refer to additional specifications

RATING	0.3A 50V DC
CIRCUIT	2P2T
CONTACT RESISTANCE	100mΩ MAX.
TIMING	NON-SHORTING
TRAVEL	4mm
OPERATING FORCE	200±100gf
OPERATING LIFE(cycles)	10,000



8							
7	STEEL BALL	STEEL	1	NATURAL	WITHIN 1.5mm: ±0.1mm	UNITS	雅安科技有限公司 ACCURATE INNOTECH INC.
6	SPRING	STEEL WIRE	1	NATURAL	OVER 1.5mm: ±0.2mm	mm	
5	CONTACT CLIP	PBS STRIP	2	Ag PLATED		MAT'L	TITLE: SLIDE SWITCH / VERTICAL
4	TERMINAL	BRASS STRIP	6	Ag PLATED		SEE NOTE	
3	BASE	PHENOLIC RESIN	1	NATURAL		FINISH	SS-22H01
2	FRAME	STEEL STRIP	1	Ni PLATED		SEE NOTE	DR: <i>Ricky</i> 2015/09/02
1	KNOB	POM	1	BLACK		Q'TY	CHKD: <i>Ricky</i> 2015/09/02
NO.	PARTS	MATERIAL	Q'TY	FINISHING			DWG NO.:
							ADL-22H01
							SCALE
							3:1
							SHEET
							1/1
							REV.
							A
							CUSTOMER
							DRAWING

THESE DRAWINGS AND SPECIFICATIONS ARE THE PROPERTY OF ACCURATE INNOTECH INC AND SHALL NOT BE REPRODUCED, COPIED OR USED IN ANY MANNER WITHOUT THE PRIOR WRITTEN CONSENT OF ACCURATE INNOTECH INC.

