



RoHS Compliant
2002/95/EC

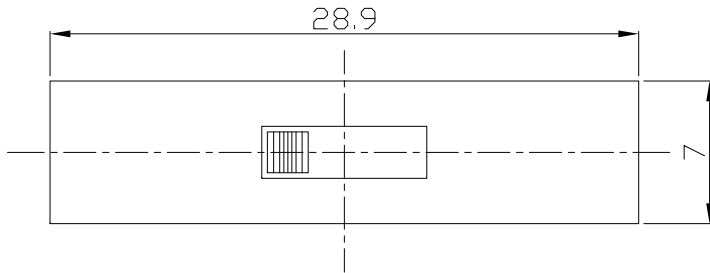
REV.	ECN.	NO.	APPD.

MODEL CODE

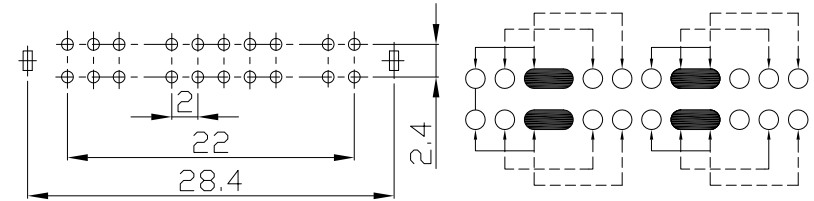
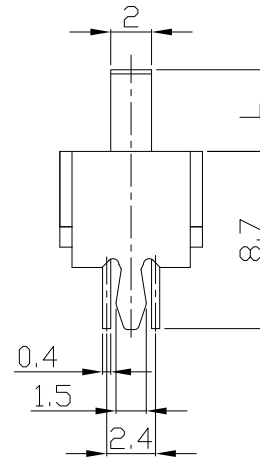
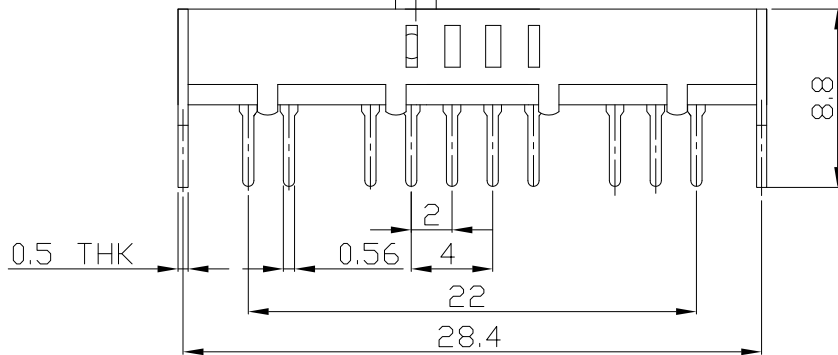
SS-44D08-GEE

Knob Type	L(mm)
GEE	~

DIMENSIONS



GEE Type
2
2 TRAVER



P.C.B LAYOUT
BOTTOM VIEW

CIRCUIT DIAGRAM

ELECTRO-MECHANICAL CHARACTERISTICS
Refer to additional specifications

RATING	0.3A 50V DC
CIRCUIT	4P4T
CONTACT RESISTANCE	100mΩ MAX.
TIMING	SHORTING
TRAVEL	2mm
OPERATING FORCE	350±100gf
OPERATING LIFE(cycles)	10,000

8					
7					
6	SPRING PLATE	PBS STRIP	2	NATURAL	
5	CONTACT CLIP	PBS C5210R-EH	6	Ag CLAD	
4	TERMINAL	BRASS STRIP	20	Ag PLATED	
3	BASE	PHENOLIC RESIN	1	NATURAL	
2	FRAME	STEEL STRIP	1	Ni PLATED	
1	KNOB	POM	1	BLACK	
NO.	PARTS	MATERIAL	Q'TY	FINISHING	

WITHIN 1.5mm: ±0.1mm
OVER 1.5mm: ±0.2mm

UNITS mm

MAT'L
SEE NOTE

FINISH
SEE NOTE

Q'TY

THESE DRAWINGS AND SPECIFICATIONS ARE THE PROPERTY OF ACCURATE INNOTECH INC AND SHALL NOT BE REPRODUCED, COPIED OR USED IN ANY MANNER WITHOUT THE PRIOR WRITTEN CONSENT OF ACCURATE INNOTECH INC.

雅安科技有限公司
ACCURATE INNOTECH INC.

TITLE: SLIDE SWITCH / VERTICAL
PART NO.: SS-44D08

DR: Ricky 2016/02/18
DWG NO.: ADL-44D08

CHKD: Ricky 2016/02/18

APPD:

SCALE	SHEET	REV.	CUSTOMER DRAWING
2:1	1/1	A	