



RoHS  
Compliant  
2002/95/EC

REV.	ECN.	NO.	APPD.

A

B

C

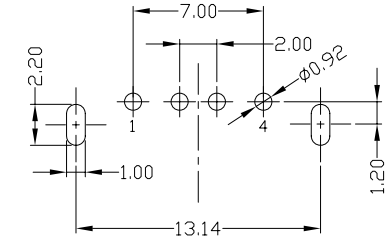
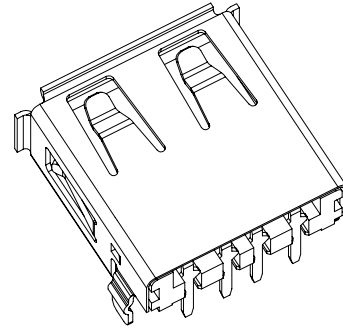
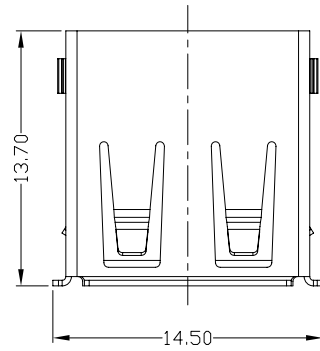
D

A

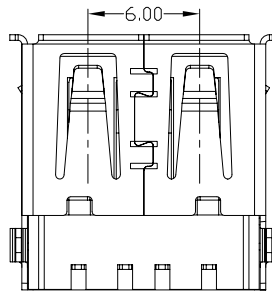
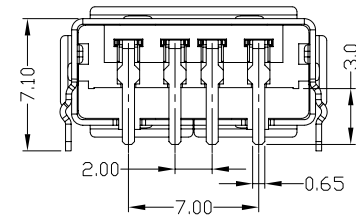
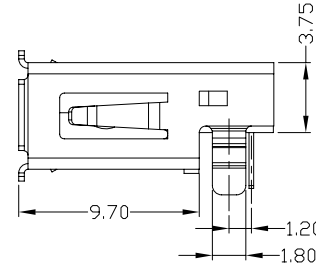
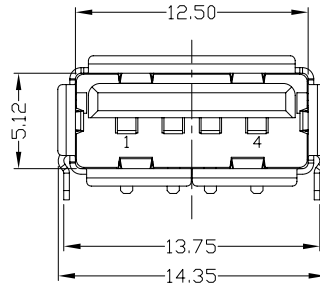
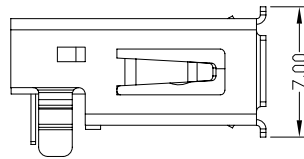
B

C

D



RECOMMEND PCB LAYOUT



NOTES:

- ELECTRICAL:
  - VOLTAGE CURRENT RATING: 2AMP, 30V AC;
  - INSULATION RESISTANCE: 1000M $\Omega$  MIN;
  - CONTACT RESISTANCE: 30m $\Omega$  MAX;
  - WITHSTANDING VOLTAGE: 500V AC;
  - OPERATING TEMPERATURE: -55°C TO +85°C.
- Mechanical:
  - Mating Force: 35N MAX
  - Unmating Force: 10N MIN.
- NOTE: 1. DIMENSIONS MARKED "▼" TO BE CHECKED BY Q.C & IPQC.

4. PART NO.

USAF-04\*N-1\*R619

1: Au 1U\*  
6: Au 30U\*

W: WHITE  
B: BLACK  
1: PBT  
2: PA6T  
3: PA9T  
4: LCP

Bill of materials:

NO	PARTS	MATERIAL	QTY	FINISHING	DIMENSIONS		UNITS	MATERIAL	SEE NOTE	FINISH	SEE NOTE	Q'TY	TITLE: 雅安科技有限公司 ACCURATE INNOTECH INC.						
					X. $\pm 0.35$	X.* $\pm 2^*$							mm	TITLE:	PART NO.:	DR:	DWG NO.:	SCALE	SHEET
3	HOUSING	PBT+30%GF	1	UL94V-0	.X $\pm 0.3$	.X* $\pm 1^*$	mm	SEE NOTE	SEE NOTE	SEE NOTE	SEE NOTE	SEE NOTE	USAF-04*N-1*R619						
2	SHELL	COPPER ALLOY/SPCC	1	PLATED NICKEL	.XX $\pm 0.25$	.XX*	mm	SEE NOTE	SEE NOTE	SEE NOTE	SEE NOTE	SEE NOTE	USAF-04*N-1*R619						
1	TERMINAL	COPPER ALLOY	4	Plated Gold in Mating Area; Tin on Solder Tails	.XXX $\pm 0.15$	.XXX*	mm	SEE NOTE	SEE NOTE	SEE NOTE	SEE NOTE	SEE NOTE	USAF-04*N-1*R619						
THESE DRAWINGS AND SPECIFICATIONS ARE THE PROPERTY OF ACCURATE INNOTECH INC AND SHALL NOT BE REPRODUCED, COPIED OR USED IN ANY MANNER WITHOUT THE PRIOR WRITTEN CONSENT OF ACCURATE INNOTECH INC.												DR: gan 2016/04/07 CHKD: gan 2016/04/07		DWG NO.: AII-R619					
APPD:												SCALE: 1:1		SHEET: 1/1		REV.: B		CUSTOMER DRAWING	

1

2

3

4

5

6

7

E

E