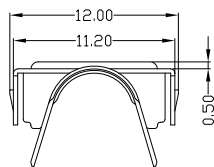
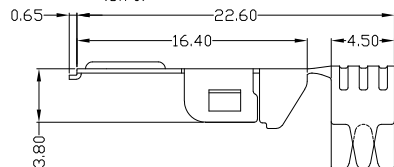
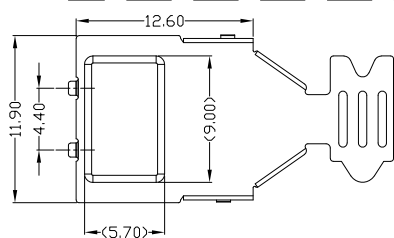
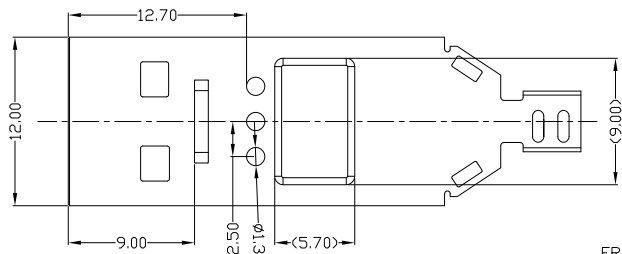
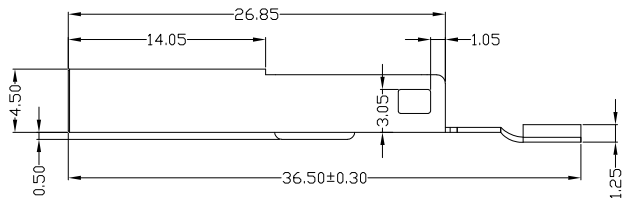
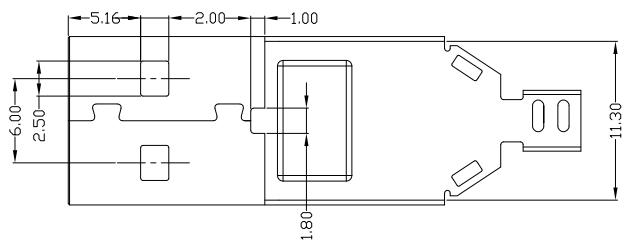




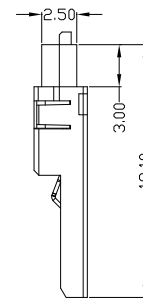
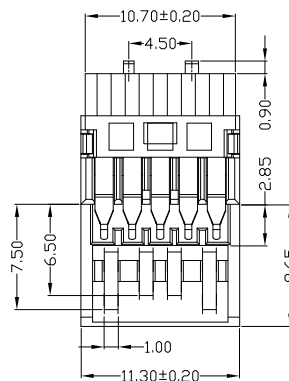
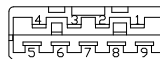
RoHS
Compliant
2002/95/EC

REV	LTR	DESCRIPTION	DATE	REVISER	APPD



FRONT SHELL
BACK SHELL

CONNECTOR



NOTES:

- ELECTRICAL:
 - VOLTAGE CURRENT RATING: 1.5AMP, 30V AC;
 - INSULATION RESISTANCE: 1000MΩ MIN;
 - CONTACT RESISTANCE: 30mΩ MAX;
 - WITHSTANDING VOLTAGE: 500V AC;
 - OPERATING TEMPERATURE: -55°C TO +85°C.
- Mechanical:
 - Mating Force: 35N MAX
 - Unmating Force: 10N MIN.
- DIMENSIONS MARKED "▼"
TO BE CHECKED BY Q.C & IPQC.

4. PART NO.

USAM-09*N-1BLSU34

1: Au 1U*
5: Au 15U*
6: Au 30U*

V: WHITE
B: BLACK
BL: BLUE
1: PBT
2: PA6T
3: PA9T
4: LCP

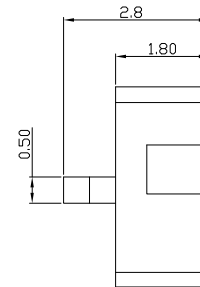
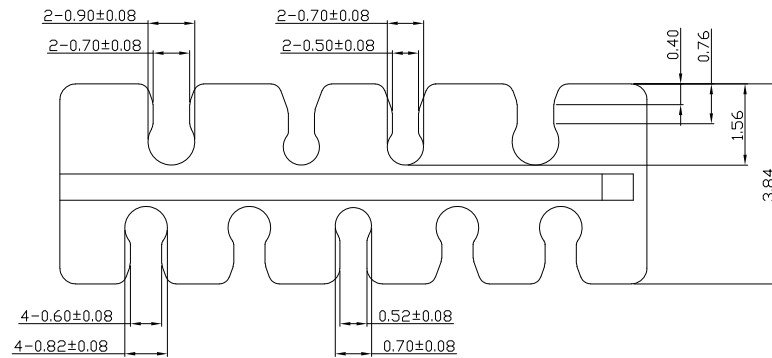
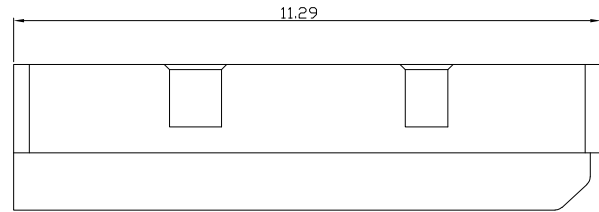
Bill of materials:

NO	PARTS	MATERIAL	QTY	FINISHING	UNITS	mm	雅安科技有限公司 ACCURATE INNOTECH INC.				
4	HOUSING	PBT+30%GF	1	UL94V-0	X. ±0.35	X.' ±2'	TITLE: USB AM 3.0 自动焊线普通款四件套0D6.0外壳带凸	PART NO.: USAM-09XN-1BLSU34			CUSTOMER DRAWING
3	SHELL	SPCC	2	PLATED NICKEL	.X ±0.3	.X' ±1'		DR: Ricky 2019/2/21	DWG NO.: AII-SU34		
2	TERMINAL(4P)	COPPER ALLOY	4	PLATED GOLD/TIN	.XX ±0.25	.XX'	CHKD: Ricky 2019/2/21	SCALE: 1:1	SHEET: 1/1	REV: B	
1	TERMINAL(5P)	COPPER ALLOY	5	PLATED GOLD/TIN	.XXX ±0.15	.XXX'	APPD:				
THESE DRAWINGS AND SPECIFICATIONS ARE THE PROPERTY OF ACCURATE INNOTECH INC AND SHALL NOT BE REPRODUCED, COPIED OR USED IN ANY MANNER WITHOUT THE PRIOR WRITTEN CONSENT OF ACCURATE INNOTECH INC					Q'TY						



RoHS
Compliant
2002/95/EC

REV	LTR	DESCRIPTION	DATE	REVISER	APPD



NOTES:

1.品质要求事项

- 1)最大毛边不可超0.03mm；
- 2)最大扭曲变形不可超过0.05mm；
- 3)未标示之R角以0.15mm处理，未标示之倒角以0.15mm处理；

2.DIMENSIONS MARKED "▼"
TO BE CHECKED BY Q.C & IPQC.

3. PART NO.

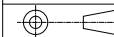
USAM-09XN-6BSU30-CA

B:BLACK
6:PA66

Bill of materials:

NO	PARTS	MATERIAL	QTY	FINISHING	UNITS	MAT'L	FINISH	Q'TY	TITLE:	PART NO.:	DR:	CHKD:	APPD:	SCALE	SHEET	REV.	CUSTOMER DRAWING
1	CABLE CLAMP	PA66+30%GF	1	UL94V-0	X. ±0.35	X.' ±2'	SEE NOTE	SEE NOTE	USB AM 3.0 28#24# B款理线夹	USAM-09XN-6BSU30-CA	Ricky	Ricky		1:1	1/1	B	
					.X ±0.3	.X' ±1'	SEE NOTE	SEE NOTE	2019/2/19	AII-SU30-CA							
					.XX ±0.25	.XX'	SEE NOTE	SEE NOTE									
					.XXX ±0.15	.XXX'	SEE NOTE	SEE NOTE									

THESE DRAWINGS AND SPECIFICATIONS ARE THE PROPERTY OF ACCURATE INNOTECH INC AND SHALL NOT BE REPRODUCED, COPIED OR USED IN ANY MANNER WITHOUT THE PRIOR WRITTEN CONSENT OF ACCURATE INNOTECH INC



雅安科技有限公司
ACCURATE INNOTECH INC.