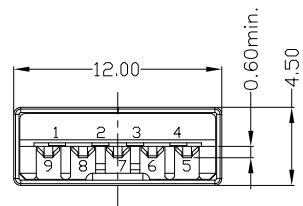
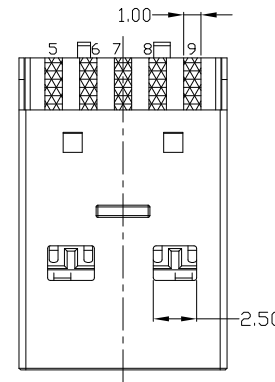
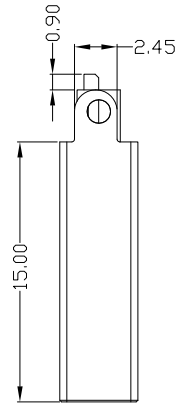
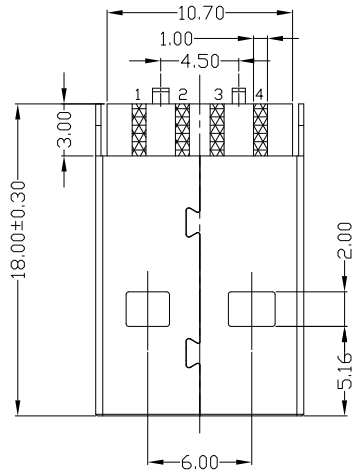
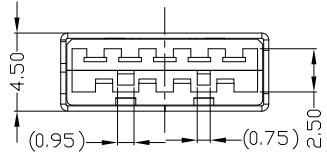




RoHS  
Compliant  
2002/95/EC  
Process  
Capable

REV	LTR	DESCRIPTION	DATE	REVISER	APPD



NOTES:

1.ELECTRICAL:

- 1)>VOLTAGE CURRENT RATING:1.5AMP,30V AC;
- 2)>INSULATION RESISTANCE: 100MΩ MIN;
- 3)>CONTACT RESISTANCE: 30mΩ MAX;
- 4)>WITHSTANDING VOLTAGE: 100V AC;
- 5)>OPERATING TEMPERATURE:-55°C TO +85°C.

2.Mechanical:

- 1)>Mating Force: 35N MAX
- 2)>Unmating Force: 10N MIN.

3.DIMENSIONS MARKED "▼"

TO BE CHECKED BY Q.C & IPQC.

4. PART NO.

USAM-09\*N-1BLSU35

- 1:Au 1U\*
- 5:Au 15U\*
- 6:Au 30U\*
- 1:V:WHITE
- 2:BLACK
- 3:BLUE
- 4:CP

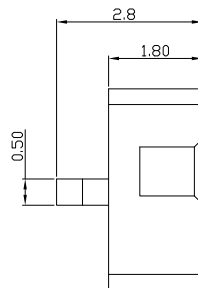
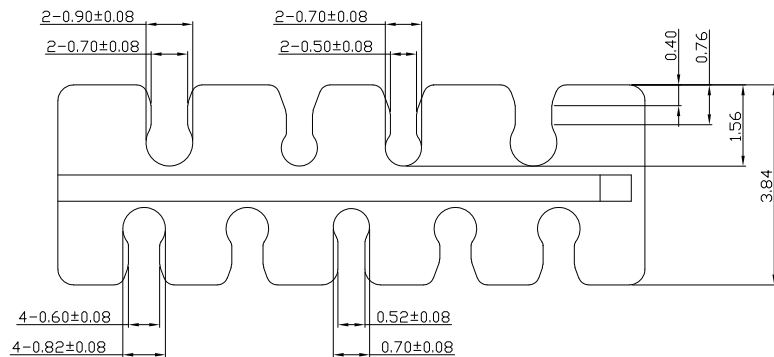
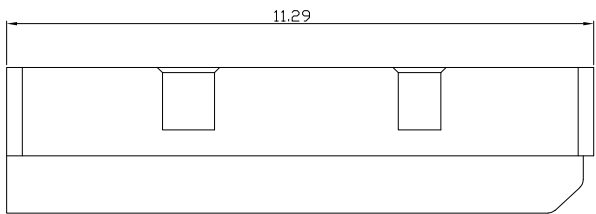
Bill of materials:

NO	PARTS	MATERIAL	QTY	FINISHING	UNITS	mm	雅安科技有限公司 ACCURATE INNOTECH INC.						
4	HOUSING	PBT+30%GF	1	UL94V-0	X. ±0.35	X.' ±2*	MAT'L	TITLE: USB AM 3.0 短体 自动焊线 一体式		PART NO.: USAM-09XN-1BLSU35			
3	SHELL	SPCC	1	PLATED NICKEL	.X ±0.3	.X' ±1*		SEE NOTE	DR: Ricky 2019/2/19		DWG NO.: AII-SU35		
2	TERMINAL(4P)	COPPER ALLOY	4	PLATED GOLD/TIN	.XX ±0.25	.XX*	FINISH	CHKD: Ricky 2019/2/19		SCALE	SHEET	REV.	CUSTOMER
1	TERMINAL(5P)	COPPER ALLOY	5	PLATED GOLD/TIN	.XXX ±0.15	.XXX*	SEE NOTE	APPD:		1:1	1/1	B	DRAWING
					THESE DRAWINGS AND SPECIFICATIONS ARE THE PROPERTY OF ACCURATE INNOTECH INC AND SHALL NOT BE REPRODUCED, COPIED OR USED IN ANY MANNER WITHOUT THE PRIOR WRITTEN CONSENT OF ACCURATE INNOTECH INC		Q'TY						



RoHS  
Compliant  
2002/95/EC

REV	LTR	DESCRIPTION	DATE	REVISER	APPD



NOTES:

1.品质要求事项

- 1)最大毛边不可超0.03mm；
- 2)最大扭曲变形不可超过0.05mm；
- 3)未标示之R角以0.15mm处理，未标示之倒角以0.15mm处理；

2.DIMENSIONS MARKED "▼"  
TO BE CHECKED BY Q.C & IPQC.

3. PART NO.

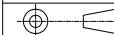
USAM-09XN-6BSU30-CA

B:BLACK  
6:PA66

Bill of materials:

NO	PARTS	MATERIAL	QTY	FINISHING	UNITS	MAT'L	FINISH	Q'TY	TITLE:	PART NO.:	DR:	CHKD:	APPD:	SCALE	SHEET	REV.	CUSTOMER DRAWING
1	CABLE CLAMP	PA66+30%GF	1	UL94V-0	X. ±0.35	X.' ±2'	SEE NOTE	SEE NOTE	USB AM 3.0 28#24# B款理线夹	USAM-09XN-6BSU30-CA	Ricky	Ricky		1:1	1/1	B	
					.X ±0.3	.X' ±1'	SEE NOTE		DR: Ricky 2019/2/19	AII-SU30-CA							
					.XX ±0.25	.XX'	SEE NOTE		CHKD: Ricky 2019/2/19								
					.XXX ±0.15	.XXX'	SEE NOTE		APPD:								

THESE DRAWINGS AND SPECIFICATIONS ARE THE PROPERTY OF ACCURATE INNOTECH INC AND SHALL NOT BE REPRODUCED, COPIED OR USED IN ANY MANNER WITHOUT THE PRIOR WRITTEN CONSENT OF ACCURATE INNOTECH INC



雅安科技有限公司  
ACCURATE INNOTECH INC.