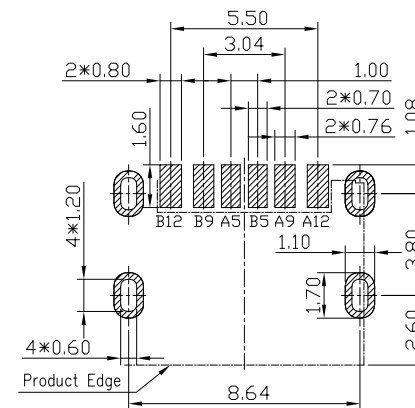
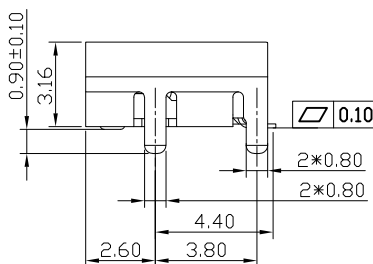
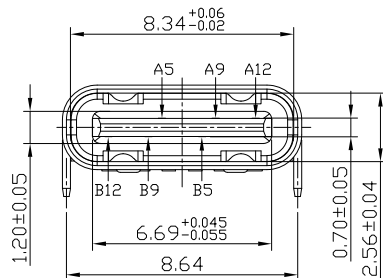
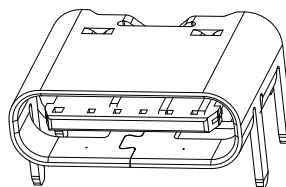
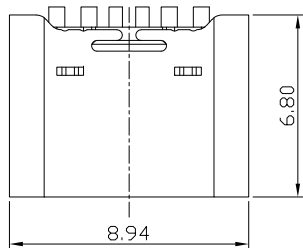


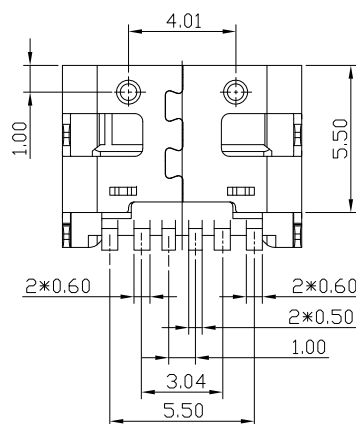


RoHS
Compliant
2002/95/EC

REV.	ECN. NO.	APPD.



RECOMMENDED P.C.B. LAYOUT
TOLERANCE UNSPECIFIED ±0.05mm



NOTES:

1.ELECTRICAL:

- 1)VOLTAGE CURRENT RATING: 3A 20V
- 2)INSULATION RESISTANCE: 100mΩ MIN 100V DC
- 3)CONTACT RESISTANCE: 50mΩ MAX.
- 4)WITHSTANDING VOLTAGE: 100V AC.
- 5)OPERATING TEMPERATURE:-30°C TO +80°C.

2.Mechanical:

- 1)Mating Force: 5N~20N
- 2)Unmating Force: 8N~20N AFTER TEST.
- 3)Durability: 10,000 cycles

3.DIMENSIONS MARKED "▼"
TO BE CHECKED BY Q.C & IPQC.

USCF-061N-4BVH21

1:Au 1U"
2:Au 3U"
5:Au 15U"
6:Au 30U"
W:WHITE
B:BLACK
1-PBT
2-PA6T
3-PA9T
4-LCP

USB TYPE-C PIN ASSIGNMENTS

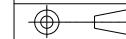
PIN	SIGNAL NAME	PIN	SIGNAL NAME
A5	CC1	B12	GND
A9	VBUS	B9	VBUS
A12	GND	B5	CC2

Bill of materials:

NO	PARTS	MATERIAL	QTY	FINISHING	UNITS	mm	UNITS	mm	TITLE:	PART NO.:
4	SHELL	STAINLESS STEEL	1	PLATED NICKEL	X.	±0.20	X.*	±2°	USB TYPE CF 6P 单排SMT 外壳无弹片 L=6.8	USCF-06XN-4BVH21
3	CONTACT	COPPER ALLOY	6	PLATED GOLD/TIN	.X	±0.15	.X.*	±1.5°	DR: Ricky 2022/06/06	DWG NO.:
2	MID PLATE	STAINLESS STEEL	1		.XX	±0.10			CHKD: Ricky 2022/06/06	AII-VH21
1	HOUSING	LCP+30%GF	1	UL94V-0	.XXX	±0.05			APPD:	SCALE SHEET REV. CUSTOMER
										1:1 1/1 B DRAWING

THESE DRAWINGS AND SPECIFICATIONS ARE THE PROPERTY OF ACCURATE INNOTECH INC AND SHALL NOT BE REPRODUCED, COPIED OR USED IN ANY MANNER WITHOUT THE PRIOR WRITTEN CONSENT OF ACCURATE INNOTECH INC

Q'TY



雅安科技有限公司
ACCURATE INNOTECH INC.