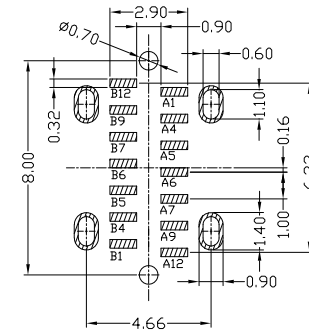
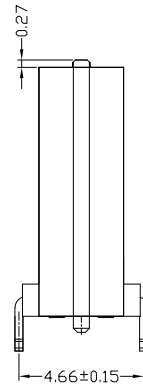
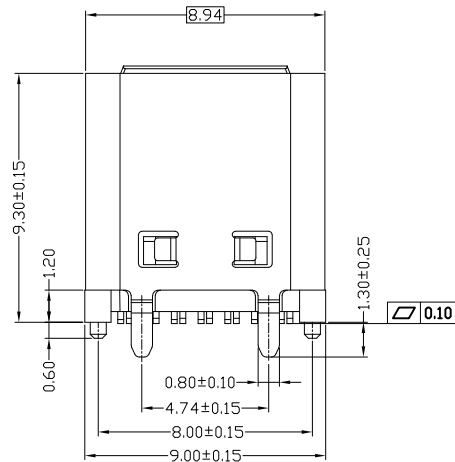
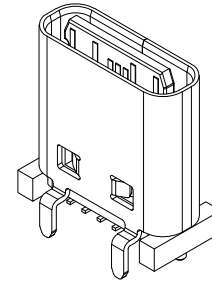
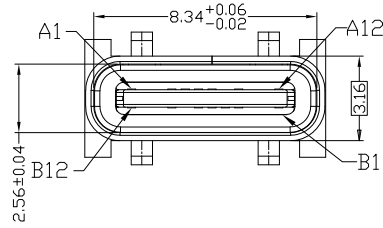


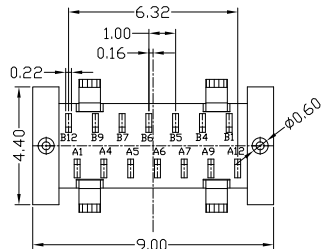


RoHS
Compliant
2002/95/EC

| REV. | ECN. NO. | APPD. |
|------|----------|-------|
| | | |
| | | |



RECOMMENDED P.C.B. LAYOUT (T:1.00mm)
TOLERANCE UNSPECIFIED ±0.05mm

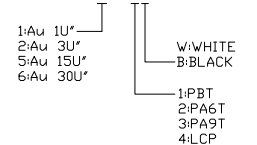


| | | | |
|-----|-------------|-----|-------------|
| A1 | GND | B12 | GND |
| A4 | VBUS | B9 | VBUS |
| A5 | CC1 | B7 | D- |
| A6 | D+ | B6 | D+ |
| A7 | D- | B5 | CC2 |
| A9 | VBUS | B4 | VBUS |
| A12 | GND | B1 | GND |
| PIN | SIGNAL NAME | PIN | SIGNAL NAME |

NOTES:

- ELECTRICAL:
 - VOLGATE CURRENT RATING: 5A
 - INSULATION RESISTANCE: 150V DC/100MΩ MIN.
 - CONTACT RESISTANCE: 40mΩ MAX.
 - WITHSTANDING VOLTAGE: 150V AC / 1mA MAX.
 - OPERATING TEMPERATURE:-55°C TO +85°C.
- Mechanical:
 - Mating Force: 5N~20N MAX.
 - Unmating Force: 8N~20N(INITIAL), 5N~20N(AFTER 10,000 CYCLES) MIN.
 - Durability: 10,000 cycles
- DIMENSIONS MARKED '▼'
TO BE CHECKED BY Q.C & IPQC.

USCF-142N-4BQG58



Bill of materials:

| | | | | | | | | | |
|----|---------|-----------------|-----|-----------|-------|------|-------|----------|----|
| 5 | | | | X. | ±0.25 | X.* | ±1° | UNITS | mm |
| 4 | HOOK | STAINLESS STEEL | 1 | .X | ±0.20 | .X.* | ±0.5° | MAT'L | |
| 3 | SHELL | STAINLESS STEEL | 1 | .XX | ±0.15 | | | SEE NOTE | |
| 2 | CONTACT | COPPER ALLOY | 14 | .XXX | ±0.10 | | | SEE NOTE | |
| 1 | HOUSING | LCP+30%GF | 1 | | | | | Q'TY | |
| NO | PARTS | MATERIAL | QTY | FINISHING | | | | | |

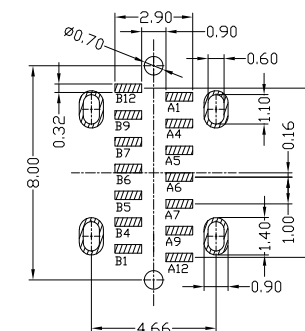
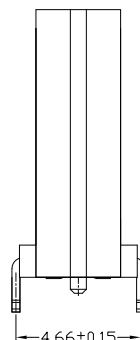
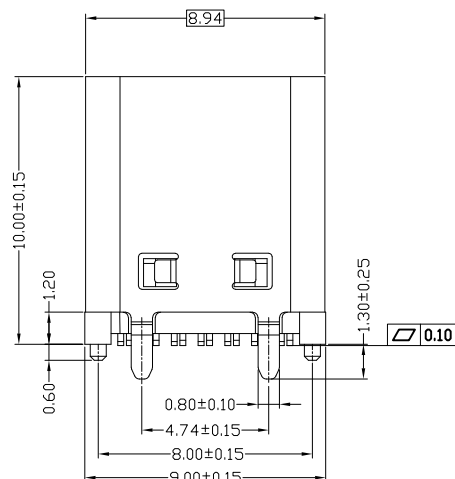
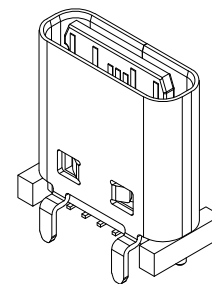
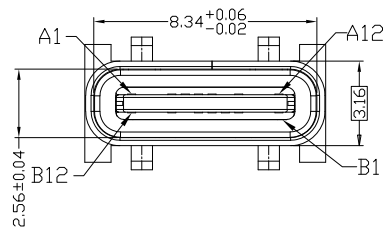
THESE DRAWINGS AND SPECIFICATIONS ARE THE PROPERTY OF ACCURATE INNOTECH AND SHALL NOT BE REPRODUCED, COPIED OR USED IN ANY MANNER WITHOUT THE PRIOR WRITTEN CONSENT OF ACCURATE INNOTECH INC.

| | | | |
|--------------------------------------|--|-------------------------------|------------------|
| 雅安科技有限公司 ACCURATE INNOTECH INC. | | | |
| TITLE: USB TYPE CF 14P 立式贴板 1#9.3 | | PART NO.: USCF-14XN-4BQG58 | |
| DR: Ricky 2022/04/18 | | DWG NO.: AII-QG58 | |
| CHKD: Ricky 2022/04/18 | | SCALE | SHEET |
| APPD: | | 1:1 | 1/1 |
| | | REV. | CUSTOMER DRAWING |
| | | B | |

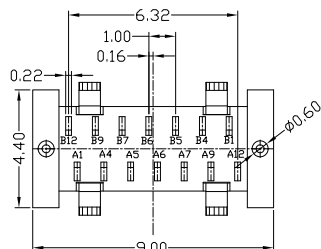


RoHS Compliant
2002/95/EC

| REV. | ECN. NO. | APPD. |
|------|----------|-------|
| | | |
| | | |



RECOMMENDED P.C.B. LAYOUT (T:1.00mm)
TOLERANCE UNSPECIFIED ±0.05mm

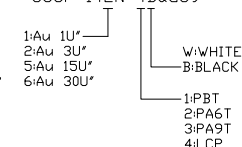


| | | | |
|-----|-------------|-----|-------------|
| A1 | GND | B12 | GND |
| A4 | VBUS | B9 | VBUS |
| A5 | CC1 | B7 | D- |
| A6 | D+ | B6 | D+ |
| A7 | D- | B5 | CC2 |
| A9 | VBUS | B4 | VBUS |
| A12 | GND | B1 | GND |
| PIN | SIGNAL NAME | PIN | SIGNAL NAME |

NOTES:

- ELECTRICAL:**
 - 1) VOLTAGE CURRENT RATING: 5A
 - 2) INSULATION RESISTANCE: 150V DC/100MΩ MIN.
 - 3) CONTACT RESISTANCE: 40mΩ MAX.
 - 4) WITHSTANDING VOLTAGE: 150V AC / 1mA MAX.
 - 5) OPERATING TEMPERATURE: -55°C TO +85°C.
 - Mechanical:**
 - 1) Mating Force: 5N~20N MAX.
 - 2) Unmating Force: 8N~20N (INITIAL), 5N~20N (AFTER 10,000 CYCLES) MIN.
 - 3) Durability: 10,000 cycles
- 3) DIMENSIONS MARKED '▼'
TO BE CHECKED BY Q.C & IPQC.

USCF-142N-4BQG59



Bill of materials:

| | | | | | | | | | |
|----|---------|-----------------|-----|-----------|-------|------|-------|----------|----|
| 5 | | | | X. | ±0.25 | X.* | ±1° | UNITS | mm |
| 4 | HOOK | STAINLESS STEEL | 1 | .X | ±0.20 | .X.* | ±0.5° | MAT'L | |
| 3 | SHELL | STAINLESS STEEL | 1 | .XX | ±0.15 | | | SEE NOTE | |
| 2 | CONTACT | COPPER ALLOY | 14 | .XXX | ±0.10 | | | FINISH | |
| 1 | HOUSING | LCP+30%GF | 1 | | | | | SEE NOTE | |
| NO | PARTS | MATERIAL | QTY | FINISHING | | | | Q'TY | |

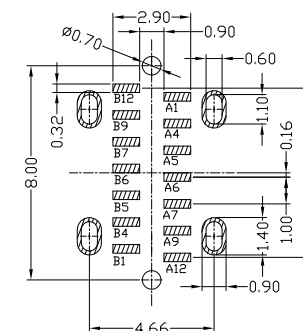
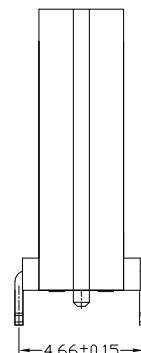
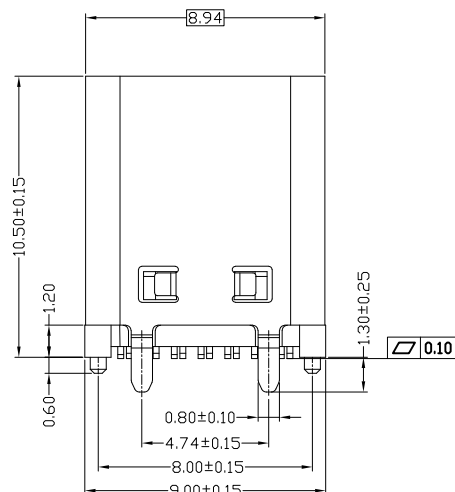
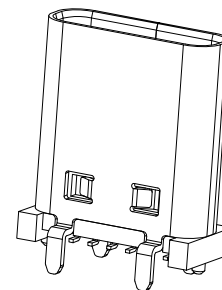
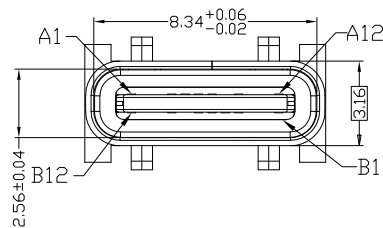
THESE DRAWINGS AND SPECIFICATIONS ARE THE PROPERTY OF ACCURATE INNOTECH AND SHALL NOT BE REPRODUCED, COPIED OR USED IN ANY MANNER WITHOUT THE PRIOR WRITTEN CONSENT OF ACCURATE INNOTECH INC.

| | | | |
|--|-----|-------------------------------|------------------|
| 雅安科技有限公司 ACCURATE INNOTECH INC. | | | |
| TITLE: USB TYPE CF 14P 立式贴板 H=10.0 | | PART NO.: USCF-14XN-4BQG59 | |
| DR: <i>Ricky</i> 2022/04/18 | | DWG NO.: AII-QG59 | |
| CHKD: <i>Ricky</i> 2022/04/18 | | SCALE | SHEET |
| APPD: | 1:1 | 1/1 | REV. B |
| | | | CUSTOMER DRAWING |

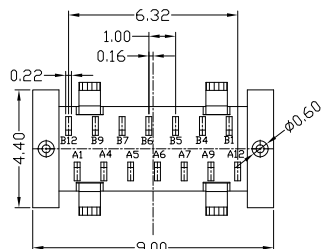


RoHS Compliant
2002/95/EC

| REV. | ECN. NO. | APPD. |
|------|----------|-------|
| | | |
| | | |



RECOMMENDED P.C.B. LAYOUT (T:1.00mm)
TOLERANCE UNSPECIFIED ±0.05mm



| | | | |
|-----|-------------|-----|-------------|
| A1 | GND | B12 | GND |
| A4 | VBUS | B9 | VBUS |
| A5 | CC1 | B7 | D- |
| A6 | D+ | B6 | D+ |
| A7 | D- | B5 | CC2 |
| A9 | VBUS | B4 | VBUS |
| A12 | GND | B1 | GND |
| PIN | SIGNAL NAME | PIN | SIGNAL NAME |

NOTES:

- ELECTRICAL:**
 - VOLGATE CURRENT RATING: 5A
 - INSULATION RESISTANCE: 150V DC/100MΩ MIN.
 - CONTACT RESISTANCE: 40mΩ MAX.
 - WITHSTANDING VOLTAGE: 150V AC / 1mA MAX.
 - OPERATING TEMPERATURE:-55°C TO +85°C.
- Mechanical:**
 - Mating Force: 5N~20N MAX.
 - Unmating Force: 8N~20N(INITIAL), 5N~20N(AFTER 10,000 CYCLES) MIN.
 - Durability: 10,000 cycles
- DIMENSIONS MARKED '▼'
TO BE CHECKED BY Q.C & IPQC.

USCF-142N-4BQG501

- 1Au 1U*
 - 2Au 3U*
 - 5Au 15U*
 - 6Au 30U*
- W:WHITE
 - B:BLACK
 - 1PBT
 - 2PA6T
 - 3PA9T
 - 4LCP

Bill of materials:

| | | | | | | | | | |
|----|---------|-----------------|-----|-----------|-------|------|-------|----------|----|
| 5 | | | | X. | ±0.25 | X.* | ±1° | UNITS | mm |
| 4 | HOOK | STAINLESS STEEL | 1 | .X | ±0.20 | .X.* | ±0.5° | MAT'L | |
| 3 | SHELL | STAINLESS STEEL | 1 | .XX | ±0.15 | | | SEE NOTE | |
| 2 | CONTACT | COPPER ALLOY | 14 | .XXX | ±0.10 | | | SEE NOTE | |
| 1 | HOUSING | LCP+30%GF | 1 | | | | | | |
| NO | PARTS | MATERIAL | QTY | FINISHING | | | | | |

THESE DRAWINGS AND SPECIFICATIONS ARE THE PROPERTY OF ACCURATE INNOTECH AND SHALL NOT BE REPRODUCED, COPIED OR USED IN ANY MANNER WITHOUT THE PRIOR WRITTEN CONSENT OF ACCURATE INNOTECH INC

| | |
|-------|--|
| Q'TY | |
| APPD: | |

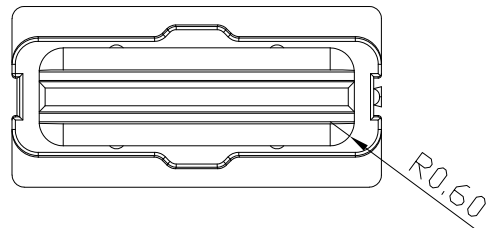
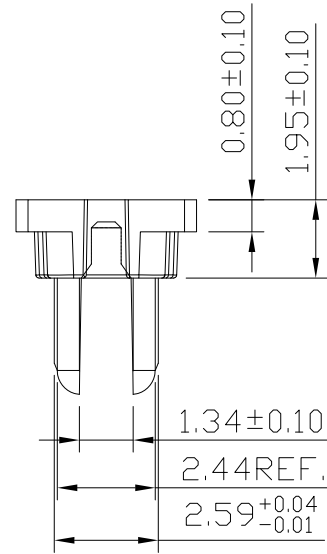
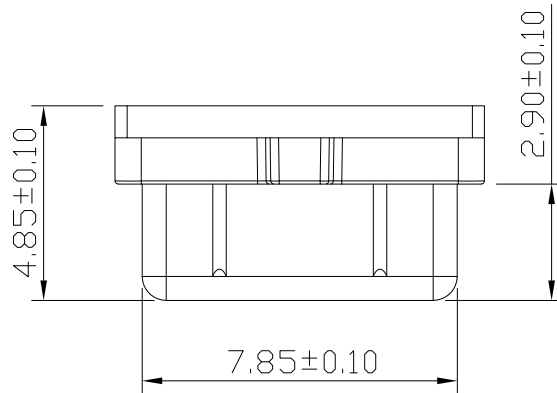
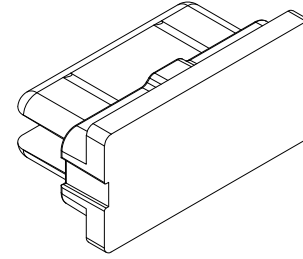
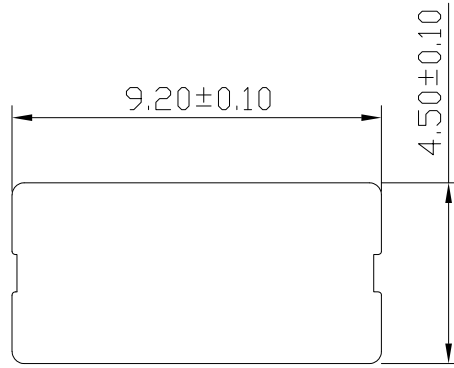
雅安科技有限公司
ACCURATE INNOTECH INC.

| | | | |
|--------|-----------------------------|------------------|-------------------|
| TITLE: | USB TYPE CF 14P 立式贴板 H=10.5 | PART NO.: | USCF-14XN-4BQG501 |
| DR: | Ricky 2022/04/18 | DWG NO.: | AII-QG501 |
| CHKD: | Ricky 2022/04/18 | SCALE | 1:1 |
| APPD: | | SHEET | 1/1 |
| | | REV. | B |
| | | CUSTOMER DRAWING | |



RoHS
Compliant
2002/95/EC

| REV. | ECN. | NO. | APPD. |
|------|------|-----|-------|
| | | | |
| | | | |
| | | | |



NOTES :

1. 产品要不可有缩水，起泡、变形、划伤、缺胶、毛刺等外观不良
2. 端子槽、插口等孔内毛边0.03mm MAX，
3. 图中未注角度最大为0.5°，未注半径最大为0.2mm；

Bill of materials:

| NO | PARTS | MATERIAL | QTY | FINISHING | X. | ±0.15 | X.* | ±2° | UNITS | 雅安科技有限公司 ACCURATE INNOTECH INC. | | | | |
|----|-------|-----------|-----|-----------|---|-------|-----|-----|----------|------------------------------------|-----------------------|-------|------|----------|
| | | | | | | | | | mm | TITLE: | PART NO.: | | | |
| 1 | CAP | LCP+30%GF | 1 | UL94V-0 | .X | ±0.10 | | | MAT'L | USB TYPE CF 吸取盖 | USCF-1XXN-4BXG5XX-C3 | | | |
| | | | | | .XX | ±0.05 | | | SEE NOTE | DR: <i>Ricky</i> 2023/10/18 | DWG NO.: AII-XG5XX-C3 | | | |
| | | | | | .XXX | ±0.03 | | | FINISH | CHKD: <i>Ricky</i> 2023/10/18 | SCALE | SHEET | REV. | CUSTOMER |
| | | | | | THESE DRAWINGS AND SPECIFICATIONS ARE THE PROPERTY OF ACCURATE INNOTECH AND SHALL NOT BE REPRODUCED, COPIED OR USED IN ANY MANNER WITHOUT THE PRIOR WRITTEN CONSENT OF ACCURATE INNOTECH INC. | | | | Q'TY | APPD: | 1:1 | 1/1 | B | DRAWING |